



DRIVELINE COMPONENTS CATALOG
FLANGE YOKES



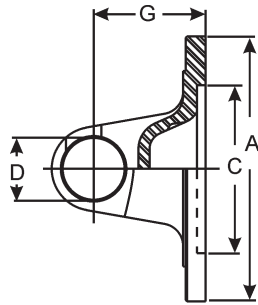
J300P-2
JANUARY 2008

Supersedes
Section 2, Dated
April 2005

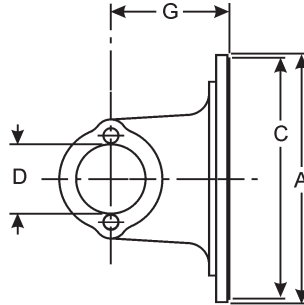


To identify a Flange Yoke, two pieces of information are needed:

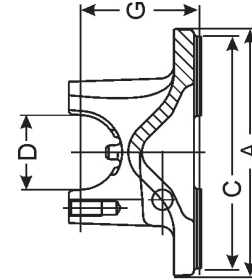
1). The Design of the Part



SNAP RING



BEARING PLATE



BEARING STRAP

2). The Series of the Part

A Flange or Swing Diameter	B - Bolt Holes			C Pilot Diameter M-Male F-Female	Joint Angle	G Flange Face to Centerline	Illustration Figure	Spicer Part Number
	Bolt Circle Diameter	Bolt Hole Diameter	Number of Bolt holes					
1310 SERIES (Continued)			E-3.469	D-1.062	USE KIT NO. 5-153X, 5-785X, 5-801X			
5.2190	4.2500	.4840	4	2.0000F	19.0	1.6250	1	2-2-1379
<i>Bolt holes are equally spaced. Part has hole thru center.</i>								
5.7500	4.7500	.5070	4	3.7500M	20.0	1.3750	1	2-2-579
1330 SERIES		E-3.625	D-1.062	USE KIT NO. 5-213X, 5-790X, 5-812X				
4.4690	3.5000	.4840	4	2.0000F	—	1.6250	1	2-2-949
<i>Bolts holes are equally spaced</i>								
4.6250	3.7500	.4380	4	2.7500M	—	1.5620	1	2-2-1209
4.6250	3.7500	.4380	4	2.7500M	—	1.5620	1	2-2-1209

Spicer Life Series™ flange yokes that are spring tab or strap design can be found on pages 3 through 4. Flange yokes that are snap ring or strap design can be found on pages 5 through 7. Flange yokes that are bearing plate design can be found on pages 8 through 9. A part number index is provided on page 10.

Footnotes for parts and assemblies that are discontinued, will be discontinued upon depletion of stock, or not sold separately, are indicated by a symbol next to the part number. Match the symbol to the appropriate status at the bottom of the page. All other footnotes are located immediately below the yoke dimensional data.



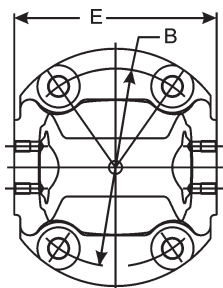


Figure 1

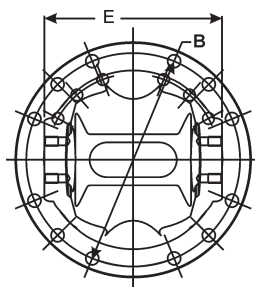


Figure 2

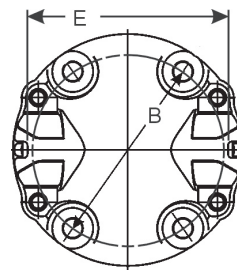
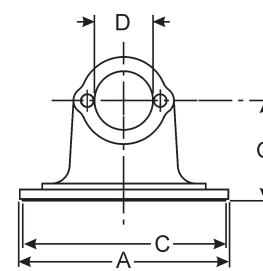


Figure 3



Side View of Figures 1, 2, 4 & 6

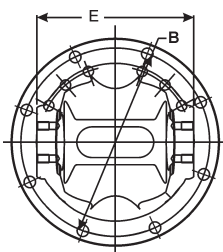


Figure 4

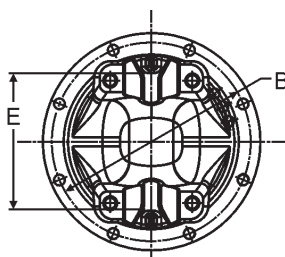


Figure 5

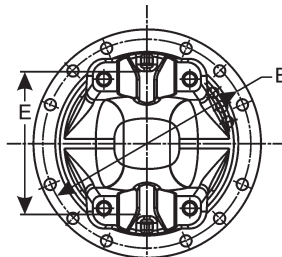
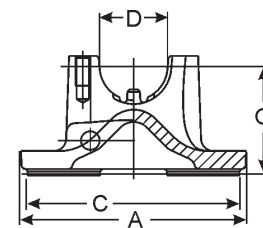


Figure 6



Side View of Figures 3 & 5

A	B - Bolt Holes			C	G	Illustration Figure	Spicer Part Number
Flange or Swing Diameter	Bolt Circle Diameter	Diameter D-Drilled T-Tapped	Number of Holes	Pilot Diameter M-Male F-Female	Flange Face to Centerline		
SPL90 SERIES		E-5.380 (HR STYLE 4.958)		D-1.625	USE KIT NO. SPL90X		
5.906	5.118	.478-D	8	3.544F	3.281	2	90-2-29• Metric flange
6.688	6.124	.375-D	8	5.312M	2.750	5	90-2-49-1 B.S./H.R.style w/brake pilot.
6.688	6.124	.375-D	8	6.624M	3.280	2	90-2-19
8.000	7.250	.375-D	8	6.438M	2.750	5	90-2-39-1 B.S./H.R.style w/brake pilot.
8.000	7.250	.375-D	8	7.750M	2.750	5	90-2-69-1 Bearing strap/half round style
SPL100 SERIES		E-5.380	D-1.626	USE KIT SPL100-1X			
8.000	7.250	.399-D	8	7.750M	3.250	4	100-2-159•
SPL140 SERIES		E-5.028	D-1.937	USE KIT SPL140-1X			
8.000	7.250	.375-D	8	7.750M	3.070	5	140-2-99-1• Mates with std. 1710 series companion flange
8.000	7.250	.375-D	8	7.750M	3.070	2	140-2-59 Mates with std. 1710 series companion flange
8.000	7.250	.380-D	8	6.438M	2.953	5	140-2-69-1• 1/2 Rnd part W/spec GMC bolt hole size
8.000	7.250	.396-D	12	7.750M	3.070	2	140-2-19 10mm bolt holes on 1810 bolt pattern
8.000	7.250	.439-D	12	7.750M	3.070	2	140-2-29 Mates with std. 1810 series companion flange
SPL170 SERIES		E-6.026 (HR STYLE 6.456)		D-2.166	USE KIT SPL170X		
7.087	5.906	.551-D	4	—	3.425	1	170-2-15 Part has serrated flange face
8.000	7.250	.378-D	8	7.750M	3.208	4	170-2-49• Mates with std. 1710 series companion flange
8.000	7.250	.440-D	12	7.750M	3.386	6	170-2-59-1
8.000	7.250	.441-D	12	7.750M	3.208	2	170-2-19 Mates with std. 1810 series companion flange

• Part is discontinued ■ Part is available until supply is exhausted ▲ Not sold separately



Important: See Safety Information in General Information Section (J300P-GI)

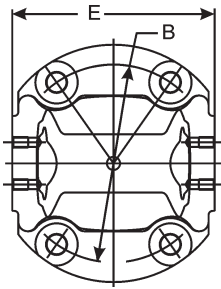


Figure 1

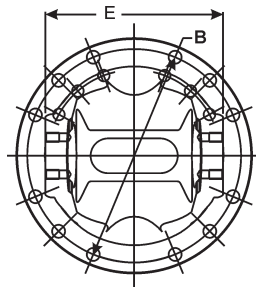


Figure 2

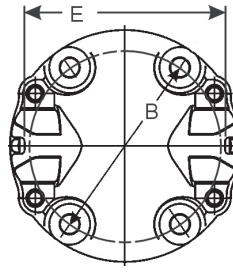
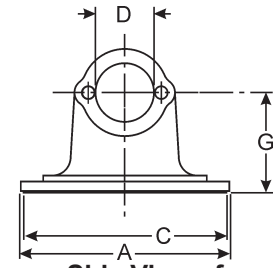


Figure 3



Side View of Figures 1, 2, 4 & 6

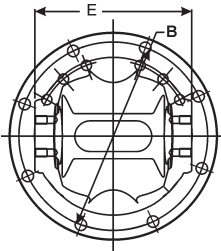


Figure 4

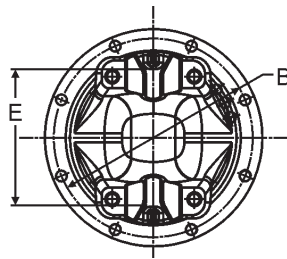


Figure 5

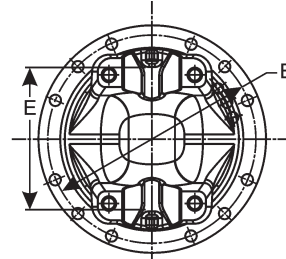
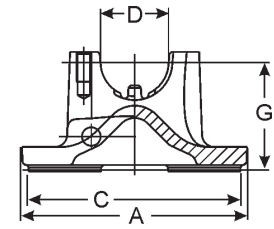


Figure 6



Side View of Figures 3 & 5

A Flange or Swing Diameter	B - Bolt Holes			C Pilot Diameter M-Male F-Female	G Flange Face to Centerline	Illustration Figure	Spicer Part Number
	Bolt Circle Diameter	Diameter D-Drilled T-Tapped	Number of Holes				
SPL170 SERIES (Continued) E-6.026 (HR STYLE 6.456) D-2.166 USE KIT SPL170X							
8.000	7.250	.479-D	12	7.750M	3.375	6	170-2-39-1 <i>Half round metric flange</i>
8.000	7.250	.481-D	12	7.750M	3.208	2	170-2-29• <i>12.2mm bolt holes on 1810 bolt pattern</i>
SPL250 SERIES E-5.986 D-2.362 USE KIT SPL250X							
7.087	5.906	.551-D	4	—	3.583	1	250-2-15• <i>Part has serrated flange face</i>
8.000	7.250	.439-D	12	7.750M	3.500	2	250-2-19 <i>Mates with std. 1810 series companion flange</i>
8.000	7.250	.440-D	12	7.750M	3.524	6	250-2-39-1 <i>Half round metric flange</i>
8.000	7.250	.440-D	12	7.750M	3.524	6	250-2-49-1• <i>Half round metric flange</i>

• Part is discontinued ■ Part is available until supply is exhausted ▲ Not sold separately



Flange Yokes Snap Ring Design

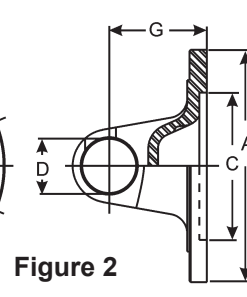
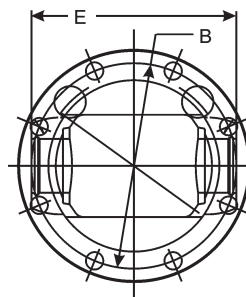
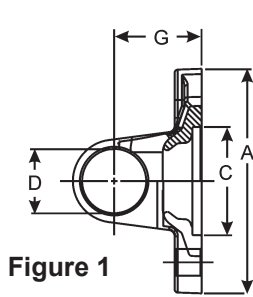
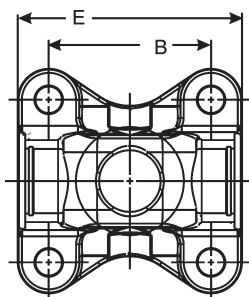


Figure 1

Figure 2

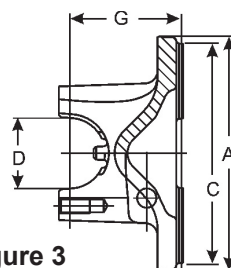
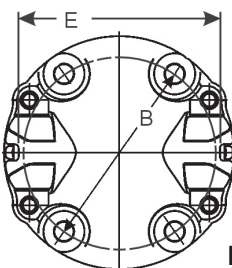


Figure 3

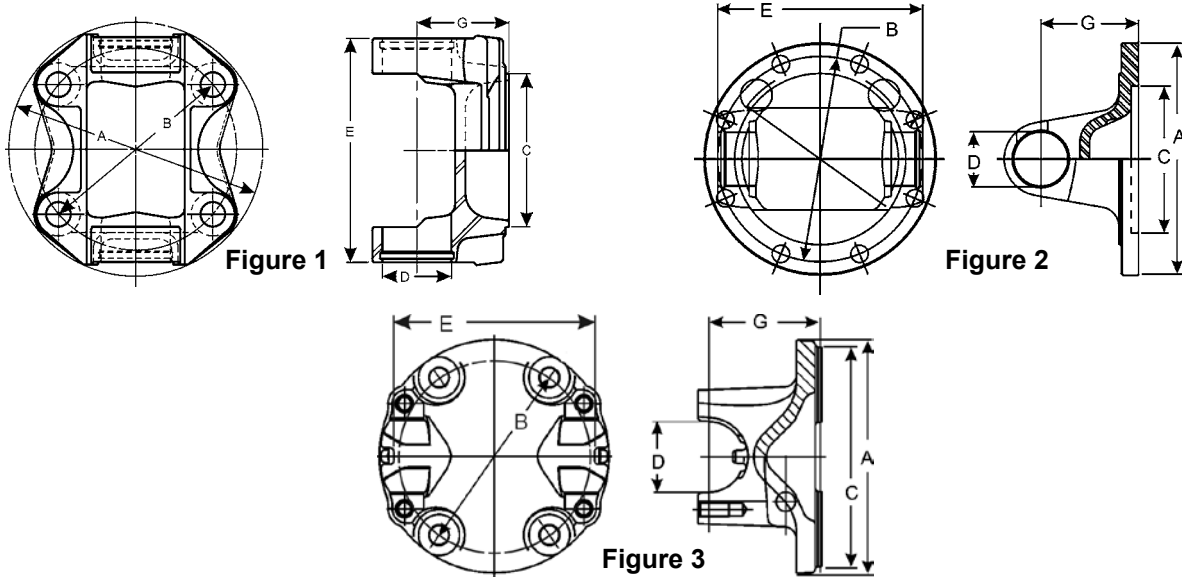
A	B - Bolt Holes			C	G	Illustration Figure	Spicer Part Number
Flange or Swing Diameter	Bolt Circle Diameter	Diameter D-Drilled T-Tapped	Number of Holes	Pilot Diameter M-Male F-Female	Flange Face to Centerline		
1000 SERIES		E-1.500	D-.938	USE KIT NO. 5-170X			
3.375	2.750	.312-D	4	2.250M	1.562	1	10-2-29
1100 SERIES		E-2.656	D-.938	USE KIT NO. 5-101X OR 5-111X			
3.375	2.750	.312-D	4	2.250M	1.188	1	1-2-39
3.375	2.750	.312-D	4	2.250F	1.188	1	1-2-49
1210 SERIES		E-2.688	D-1.062	USE KIT NO. 5-443X OR 5-736X			
3.406	2.750	.328-D	4	2.250M	1.484	1	2-2-899
3.710	3.125	.334-D	4	2.250M	1.200	1	2-2-1419• <i>Fits several Nissan & Toyota pick-up trucks</i>
3.710	3.125	.334-D	4	2.250M	1.200	1	2-2-1579 <i>Bolts holes are equally spaced</i>
4.360	3.500	.484-D	4	2.000F	1.625	1	2-2-1579 was replaced by 2-2-1419 2-2-1049
1310 SERIES		E-3.469	D-1.062	USE KIT NO. 5-153X, 5-785X, 5-810X, 5-1200X			
3.625	2.875	.380-D	4	—	1.375	1	2-2-349
3.875	3.125	.375-D	4	2.375F	1.375	1	2-2-389
3.875	3.125	.375-D	4	2.375M	1.375	1	2-2-329
3.875	3.125	.375-D	4	2.375M	1.625	1	2-2-459
3.875	3.125	.406-D	4	2.375M	1.625	1	2-2-1609 <i>Metric flange</i>
4.016	3.203	.406-D	4	1.969M	1.781	1	2-2-1309 <i>10 mm bolt holes, equally spaced</i>
4.150	3.344	.406-D	4	1.812M	1.770	1	2-2-1679 <i>10 mm bolt holes, equally spaced</i>
4.158	3.346	.406-D	4	2.559M	1.766	1	2-2-1519
4.330	3.661	.446-D	4	1.811M	1.634	1	5001902
4.500	3.500	.500-D	4	2.000F	1.650	1	2-2-939 <i>Bolt holes are equally spaced. Part has hole thru center.</i>
4.580	3.750	.440-D	4	2.750M	1.190	1	2-2-1039•
4.625	3.750	.406-D	4	2.559M	1.772	1	2-2-1799 <i>10 mm bolt holes, equally spaced</i>
4.625	3.750	.438-D	4	2.750M	1.375	1	2-2-479
4.678	3.740	.469-D	4	2.547M	1.781	1	2-2-1729

• Part is discontinued ■ Part is available until supply is exhausted ▲ Not sold separately



Important: See Safety Information in General Information Section (J300P-GI)

Flange Yokes Snap Ring Design



A Flange or Swing Diameter	B - Bolt Holes			C Pilot Diameter M-Male F-Female	G Flange Face to Centerline	Illustration Figure	Spicer Part Number
	Bolt Circle Diameter	Diameter D-Drilled T-Tapped	Number of Holes				
1310 SERIES (Continued) E-3.469 D-1.062 USE KIT NO. 5-153X, 5-785X, 5-810X, 5-1200X							
4.719	3.750	.481-D	4	2.558M	1.781	1	2-2-1949 <i>12 mm bolt holes equally spaced.</i>
4.750	3.750	.503-D	4	2.750M	2.000	1	2-2-1789• <i>10 mm bolt holes, equally spaced</i>
4.906	3.937	.489-D	4	2.162F	1.930	1	2-2-1989 <i>Bolt holes are equally spaced. Part has hole thru center.</i>
5.219	4.250	.484-D	4	2.000F	1.625	1	2-2-1379 <i>Bolt holes are equally spaced. Part has hole thru center.</i>
5.750	4.750	.507-D	4	3.750M	1.375	1	2-2-579
1330 SERIES E-3.875 D-1.062 USE KIT NO. 5-213X, 5-790X, 5-812X, 5-1203X							
4.469	3.500	.484-D	4	2.000F	1.625	1	2-2-949 <i>Bolts holes are equally spaced</i>
4.528	3.661	.446-D	4	1.811M	1.653	1	5001904
4.625	3.750	.438-D	4	2.750M	1.562	1	2-2-489
4.625	3.750	.438-D	4	2.750M	1.562	1	2-2-1209
4.960	3.938	.489-D	4	2.161F	1.930	1	2-2-1879•
5.156	4.250	.453-D	4	3.125F	1.688	1	2-2-1399 <i>Bolts holes are equally spaced</i>
5.360	4.251	.500-D	4	2.560F	1.618	1	5002313
1350 SERIES E-3.875 D-1.188 USE KIT NO. 5-178X OR 5-799X							
4.500	3.750	.438-D	4	2.750M	1.281	1	3-2-809 <i>Bolt holes are equally spaced. Part has hole thru center.</i>
4.625	3.750	.438-D	4	2.750M	1.562	1	3-2-119
5.250	4.250	.470-T	4	2.680F	1.625	1	3-2-1699 <i>12mm threaded holes, Metric flange</i>
5.250	4.250	.500-D	4	2.000F	1.625	1	3-2-1579•
5.250	4.250	.500-D	4	2.560F	1.618	1	3-2-1879• <i>Bolt holes are equally spaced. Part has hole thru center.</i>
5.360	4.250	.472-T	4	2.000F	1.625	1	3-2-1619 <i>12mm threaded holes, Metric flange</i>
5.750	4.750	.500-D	4	2.953F	1.750	1	3-2-1859 <i>Bolt holes are equally spaced. Part has hole thru center.</i>
6.406	5.500	.453-D	4	3.562F	1.844	1	3-2-699

• Part is discontinued ■ Part is available until supply is exhausted ▲ Not sold separately



Flange Yokes Snap Ring Design

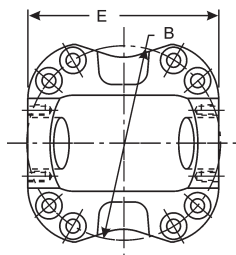
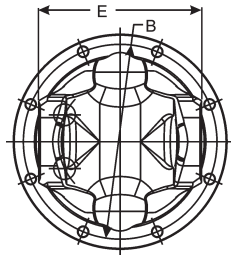
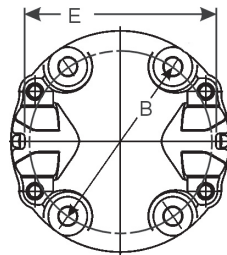
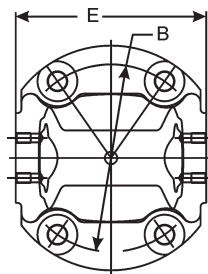
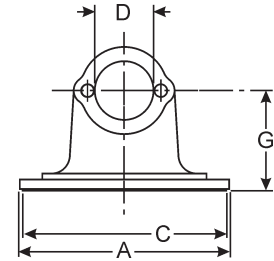
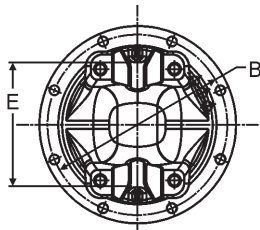
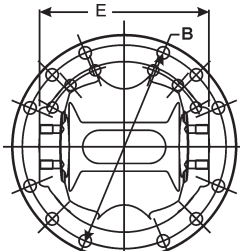
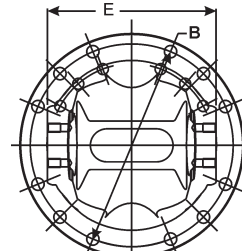
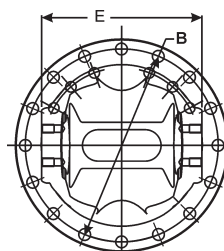
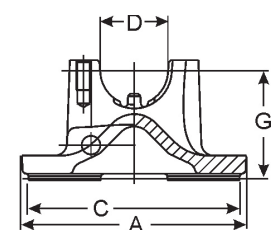
A Flange or Swing Diameter	B - Bolt Holes			C Pilot Diameter M-Male F-Female	G Flange Face to Centerline	Illustration Figure	Spicer Part Number
	Bolt Circle Diameter	Diameter D-Drilled T-Tapped	Number of Holes				
1410 SERIES	E-4.438	D-1.188					USE KIT NO. 5-160X OR 5-801X
4.234	3.750	.484-D	4	2.750M	1.688	1	3-2-1329
4.625	3.750	.438-D	4	2.750F	1.688	1	3-2-299
4.625	3.750	.438-D	4	2.750M	1.688	1	3-2-159
4.625	3.750	.438-D	4	2.750M	1.938	1	3-2-439
4.724	3.996	.394-D	8	2.954F	2.531	2	3-2-1159 <i>Metric flange</i>
4.760	3.938	.484-D	4	3.149M	1.690		3-2-1549 <i>Bolt holes are on 36 degrees</i>
5.240	4.250	.500-D	4	2.000F	1.620	1	3-2-1819 <i>Part has hole thru center</i>
5.352	4.250	.512-D	4	2.680F	1.620	1	3-2-1759 <i>Bolt holes are equally spaced. Part has hole thru center.</i>
5.750	4.750	.500-D	4	2.953F	2.000	1	3-2-1839 <i>Bolt holes are equally spaced. Part has hole thru center.</i>
5.875	4.750	.480-D	4	3.750M	2.000	1	3-2-1519•
5.875	4.750	.500-D	4	3.750M	1.500	1	3-2-559
5.875	4.750	.500-D	4	3.750M	1.750	1	3-2-549
5.875	4.750	.500-D	4	3.750M	2.000	1	3-2-429
5.750	4.750	.509-D	4	3.750M	2.000	1	3-2-1789 <i>Bolts holes are equally spaced</i>
5.812	4.750	.531-D	4	3.750M	2.000	1	3-2-939
6.375	5.500	.438-D	4	3.562F	1.844	1	3-2-709
6.750	5.750	.484-D	4	4.803F	2.000	3	3-2-1659-1 <i>Bearing strap style yoke w/brake pilot and bolt pattern</i>
6.875	6.125	.375-D	8	6.875M	2.000	2	3-2-309 <i>Flange has pilot for brake</i>
1480 SERIES	E-4.438	D-1.375					USE KIT NO. 5-188X, 5-803X OR 5-804X
5.354	4.252	.509-D	4	2.680F	1.800	1	3-2-1769• <i>Bolt holes are equally spaced. Part has hole thru center.</i>
5.750	4.750	.500-D	4	3.750M	2.000	1	3-2-479
5.850	4.750	.510-D	4	2.953F	2.000	1	3-2-1869 <i>Bolt holes are equally spaced. Part has hole thru center.</i>
5.875	4.250	.472-T	4	2.680F	1.800	1	3-2-1719 <i>12mm tapped holes in flange</i>
5.875	4.750	.500-D	4	3.750M	1.500	1	3-2-489
5.875	4.750	.500-D	4	3.750M	2.000	1	3-2-609
6.875	6.125	.386-D	8	5.312M	1.938	2	3-2-909 <i>Flange has pilot for brake</i>
6.875	6.125	.386-D	8	6.625M	2.000	2	3-2-499
1550 SERIES	E-5.250	D-1.375					USE KIT NO. 5-155X, 5-808X OR 5-809X
5.750	4.750	.484-D	4	3.750M	1.500	1	4-2-1149•
5.760	4.724	.559-D	4	3.750M	2.000	1	5001720
5.774	4.750	.512-D	4	3.750M	2.000	1	4-2-669
5.875	4.750	.500-D	4	3.750F	1.500	1	4-2-759
5.875	4.750	.500-D	4	3.750M	1.500	1	4-2-679
6.156	5.250	.453-D	8	3.750F	2.500	2	4-2-829
6.875	6.125	.375-D	8	6.625M	2.000	2	4-2-689 <i>Flange has pilot for brake</i>
6.875	6.125	.386-D	8	5.312M	2.000	2	4-2-699 <i>Flange has pilot for brake</i>
6.875	6.125	.406-D	8	5.312M	2.000	2	4-2-1109

• Part is discontinued ■ Part is available until supply is exhausted ▲ Not sold separately



Important: See Safety Information in General Information Section (J300P-GI)

Flange Yokes Bearing Plate Design


Figure 1

Figure 2

Figure 3

Figure 4

**Side View of
Figures 1, 2, 4, 6 & 8**

Figure 5

Figure 6

Figure 7

Figure 8

**Side View of
Figures 3, 5 & 7**

A Flange or Swing Diameter	B - Bolt Holes		C Pilot Diameter M-Male F-Female	G Flange Face to Centerline	Illustration Figure	Spicer Part Number
	Bolt Circle Diameter	Diameter D-Drilled T-Tapped Number of Holes				
1610 SERIES		E-5.312 D-1.875			USE KIT NO. 5-279X, 5-674X	
6.875	6.125	.375-D 8	5.312M	1.875	2	5-2-989 <i>Flange has pilot for brake</i>
6.875	6.125	.375-D 8	5.312M	2.750	5	5-2-599-1 <i>B.S./H.R.style w/brake pilot.</i>
6.875	6.125	.375-D 8	5.312M	2.750	2	5-2-599 <i>Flange has pilot for brake</i>
6.875	6.125	.375-D 8	5.375F	1.875	2	5-2-1089 <i>Part has opening cast thru web</i>
6.875	6.125	.375-D 8	5.375F	2.750	2	5-2-249
6.875	6.125	.375-D 8	6.625M	1.875	2	5-2-379
6.875	6.125	.375-D 8	6.625M	2.750	2	5-2-279
6.875	6.125	.440-D 12	6.625M	2.750	6	5-2-1159•
8.000	7.250	.375-D 8	6.435M	2.750	2	5-2-709 <i>Flange has pilot for brake</i>
8.000	7.250	.375-D 8	6.435M	2.750	3	5-2-709-1• <i>B.S./H.R.style w/brake pilot.</i>
8.000	7.250	.375-D 8	6.435M	2.750	5	5-2-1249-1 <i>B.S./H.R.style w/brake pilot.</i>
8.000	7.250	.375-D 8	7.750M	1.875	2	5-2-619 <i>Part has opening cast thru web</i>
8.000	7.250	.375-D 8	7.750M	2.750	2	5-2-629
1710 SERIES		E-6.094 (HR STYLE-6.190) D-1.938			USE KIT NO. 5-280X, 5-675X	
8.000	5.118	.472-D 4	—	3.189	4	6-2-15 <i>150 mm flange w/serrated flange face</i>
8.000	7.250	.375-D 8	6.438M	3.000	2	6-2-789 <i>Flange has pilot for brake</i>
8.000	7.250	.375-D 8	6.438M	3.000	5	6-2-1439-1 <i>B.S./H.R.style w/brake pilot.</i>
8.000	7.250	.375-D 8	7.750M	2.000	2	6-2-959• <i>Part has opening cast thru web</i>
8.000	7.250	.375-D 8	7.750M	2.000	2	6-2-769
8.000	7.250	.375-D 8	7.750M	3.000	2	6-2-1239• <i>Bolts rotated 22.5 degrees for brake applications</i>

• Part is discontinued

■ Part is available until supply is exhausted

▲ Not sold separately



Flange Yokes Bearing Plate Design

A Flange or Swing Diameter	B - Bolt Holes			C Pilot Diameter M-Male F-Female	G Flange Face to Centerline	Illustration Figure	Spicer Part Number
	Bolt Circle Diameter	Diameter D-Drilled T-Tapped	Number of Holes				
1710 SERIES (Continued) E-6.094 (HR STYLE-6.190) D-1.938 USE KIT NO. 5-280X, 5-675X							
8.000	7.250	.375-D	8	7.750M	3.000	2	6-2-749
8.000	7.250	.375-D	8	7.750M	3.000	5	6-2-749-1
8.000	7.250	.375-D	8	8.000M	3.000	2	<i>Part has opening cast thru web</i> 6-2-759
8.000	7.250	.438-D	16	6.438M	3.000	8	<i>Flange has pilot for brake</i> 6-2-1219
8.000	7.250	.438-D	12	7.750M	2.000	6	<i>Flange has pilot for brake</i> 6-2-839
8.000	7.250	.438-D	8	7.750M	2.500	2	6-2-1349
8.000	7.250	.438-D	8	7.750M	3.000	5	<i>Part has opening cast thru web</i> 6-2-739-1
8.000	7.250	.438-D	8	7.750M	3.000	2	6-2-1159
8.000	7.250	.438-D	12	7.750M	3.000	7	<i>Part has opening cast thru web</i> 6-2-779-1
8.000	7.250	.438-D	12	7.750M	3.000	6	<i>Flange has pilot for brake; Bearing strap/half round style</i> 6-2-779
8.000	7.250	.438-D	8	7.750M	3.000	2	<i>Flange has pilot for brake</i> 6-2-739
1760 SERIES E-7.000 (HR STYLE-7.094) D-1.938 USE KIT NO. 5-407X, 5-677X							
8.000	7.250	.438-D	12	7.750M	3.375	6	6.3-2-19
8.000	7.250	.438-D	12	7.750M	3.375	7	6.3-2-19-1
<i>Bearing strap/half round style</i>							
1810 SERIES E-7.547 (HR STYLE-7.643) D-1.938 USE KIT NO. 5-281X, 5-676X							
8.125	7.250	.438-D	12	7.750M	2.594	6	6.5-2-359
8.000	7.250	.438-D	12	7.750M	3.375	7	6.5-2-329-1
8.000	7.250	.438-D	12	7.750M	3.375	6	6.5-2-329
1880 SERIES E-8.094 D-2.188 USE KIT NO. 5-308X							
9.562	8.250	.625-D	8	7.000M	2.500	1	8-2-119
9.562	8.250	.625-D	8	7.000M	3.500	1	8-2-109

• Part is discontinued ■ Part is available until supply is exhausted ▲ Not sold separately



Important: See Safety Information in General Information Section (J300P-GI)

1-2-39	5	3-2-1859	6	6-2-1239	8
1-2-49	5	3-2-1869	7	6-2-1349	9
2-2-1039	5	3-2-1879	6	6-2-1439-1	8
2-2-1049	5	3-2-299	7	6-2-15	8
2-2-1209	6	3-2-309	7	6-2-739	9
2-2-1309	5	3-2-429	7	6-2-739-1	9
2-2-1379	6	3-2-439	7	6-2-749	9
2-2-1399	6	3-2-479	7	6-2-749-1	9
2-2-1419	5	3-2-489	7	6-2-759	9
2-2-1519	5	3-2-499	7	6-2-769	8
2-2-1579	5	3-2-549	7	6-2-779	9
2-2-1609	5	3-2-559	7	6-2-779-1	9
2-2-1679	5	3-2-609	7	6-2-789	8
2-2-1729	5	3-2-699	6	6-2-839	9
2-2-1789	6	3-2-709	7	6-2-959	8
2-2-1799	5	3-2-809	6	6.3-2-19	9
2-2-1879	6	3-2-909	7	6.3-2-19-1	9
2-2-1949	6	3-2-939	7	6.5-2-329	9
2-2-1989	6	4-2-1109	7	6.5-2-329-1	9
2-2-329	5	4-2-1149	7	6.5-2-359	9
2-2-349	5	4-2-669	7	8-2-109	9
2-2-389	5	4-2-679	7	8-2-119	9
2-2-459	5	4-2-689	7	10-2-29	5
2-2-479	5	4-2-699	7	90-2-19	3
2-2-489	6	4-2-759	7	90-2-29	3
2-2-579	6	4-2-829	7	90-2-39-1	3
2-2-899	5	5-2-1089	8	90-2-49-1	3
2-2-939	5	5-2-1159	8	90-2-69-1	3
2-2-949	6	5-2-1249-1	8	100-2-159	3
3-2-1159	7	5-2-249	8	140-2-19	3
3-2-119	6	5-2-279	8	140-2-29	3
3-2-1329	7	5-2-379	8	140-2-59	3
3-2-1519	7	5-2-599	8	140-2-69-1	3
3-2-1549	7	5-2-599-1	8	140-2-99-1	3
3-2-1579	6	5-2-619	8	170-2-15	3
3-2-159	7	5-2-629	8	170-2-19	3
3-2-1619	6	5-2-709	8	170-2-29	4
3-2-1659-1	7	5-2-709-1	8	170-2-39-1	4
3-2-1699	6	5-2-989	8	170-2-49	3
3-2-1719	7	5001720	7	170-2-59-1	3
3-2-1759	7	5001902	5	250-2-15	4
3-2-1769	7	5001904	6	250-2-19	4
3-2-1789	7	5002313	6	250-2-39-1	4
3-2-1819	7	6-2-1159	9	250-2-49-1	4
3-2-1839	7	6-2-1219	9		





**Dana Corporation
Heavy Vehicle Technologies &
Systems Service**

PO Box 321
Toledo, Ohio 43697-0321
1-800-SAY-DANA (729-3262)

www.spicerparts.com

**Dana Corporation
Heavy Vehicle Technologies &
Systems Service - Canada**

5095 South Service Road
Beamsville, Ontario LOR 1B0
Tech Service: (905) 563-4991

**Dana Corporation
Heavy Vehicle Technologies &
Systems Service - International**

(419) 861-6325

