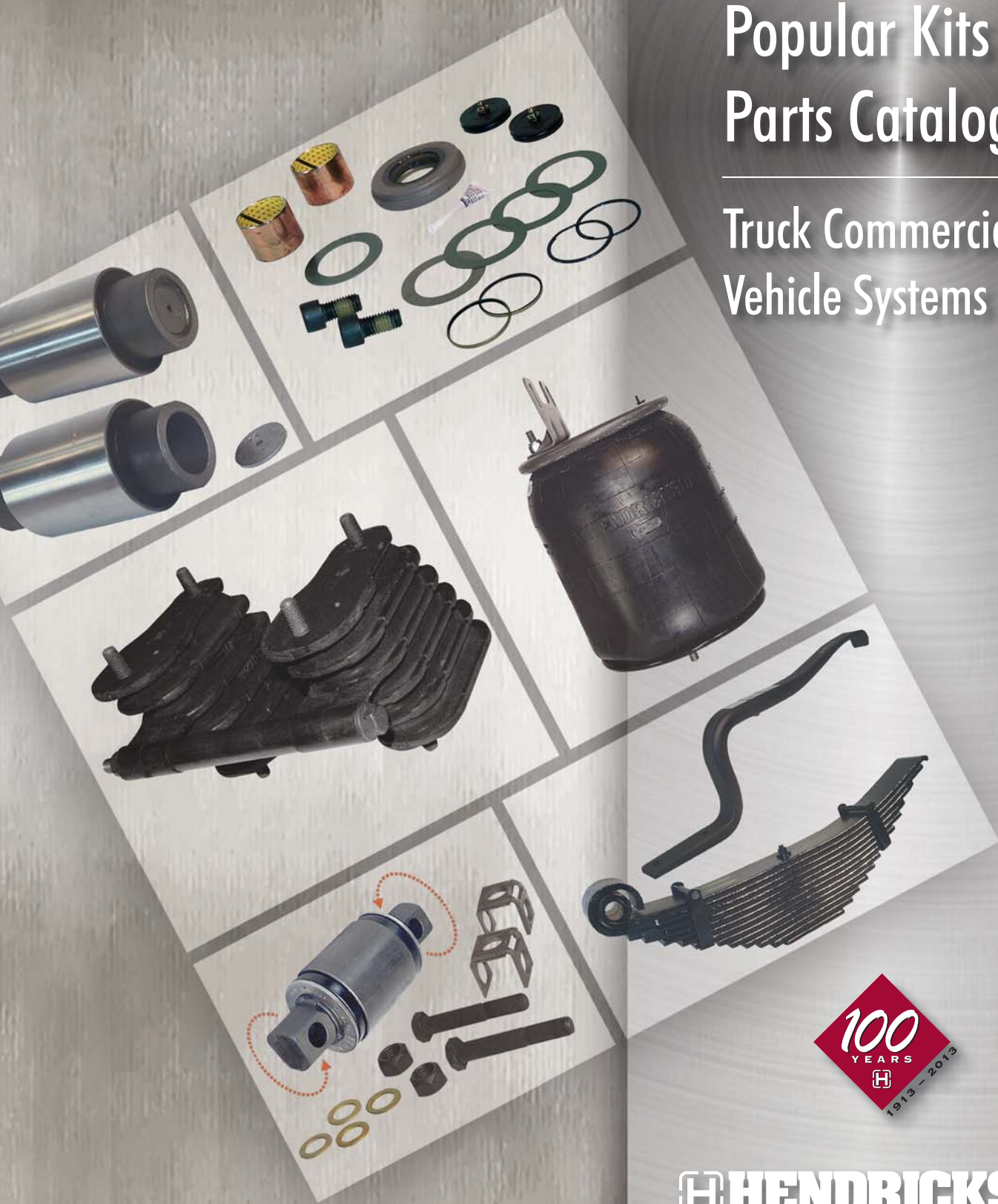




Popular Kits and Parts Catalog

Truck Commercial
Vehicle Systems



HENDRICKSON
The World Rides On Us®

100 YEARS 1913 – 2013

A force of talented people, continued innovation, dedication, and technological leadership is our 100 year story that is deeply rooted in every page of Hendrickson history.

GENUINE PARTS

There's one sure way to help protect the life of your Hendrickson truck suspension or steer axle system. Order **genuine** Hendrickson truck suspension parts and service kits. Hendrickson service kits contain the proper Hendrickson truck suspension and steer axle parts needed to complete a job — right down to fasteners, washers and easy-to-follow instructions, all in one handy box.

Hendrickson service kits make your job easier. They simplify inventory control, take up less space, keep you organized, and cut waste — all to save you money.

What's more, they ensure your getting 100% genuine Hendrickson parts.

Complete Hendrickson Service Kits are available for beam and adapter assemblies, bronze center and beam end bushings, QUIK-ALIGN® components, height control valves and many other common axle and suspension repairs. Browse the Hendrickson Popular Kits and Parts Catalog to find the correct kit for the job, then order them through your traditional parts sources.

Remember... Hendrickson parts last longer to help keep your customers on the road.

WHY GENUINE?

Original Parts, Original Fit, Original Performance — That's why.

This catalog is only a portion of all the truck suspension and axle parts available from Hendrickson. Other service kits are available if desired. Popular parts and service kits may vary upon the geographical area. All Hendrickson parts are available through traditional part sources including those not listed in this catalog.



Contents

POPULAR KITS

Auxiliary Spring Kits	5
Bolster Spring Kits	5
Equalizing Beam Bushing Kits	6
Height Control Valve Kits	8
Kingpin Bushing and Thrust Bearing Service Kits	9
Thrust Bearing Service Kits	10
QUIK-ALIGN® Collar and Pivot Bushing Kits	11
Slipper Pad Kits	12
Spring Mounting Kits	12
Tie Rod End Kits	13
Torque Rod Kits – ULTRA ROD® Two-Piece	13

POPULAR PARTS

Air Springs	14
Cross Tubes	14
Equalizing Beam Bushings	15
Front Leaf Springs and Bushings	15
Height Control Valves	16
Load Cushions and Bushings	16
Main Support Members	16
Popular Fasteners	17
Shock Absorbers	17
Saddle Assemblies	18
Springs	18
Spring Seats	18
Torque Rods and Bushings	19

PARTS & SERVICE CONTACTS



phone

Toll-free U.S. and Canada
1.866.755.5968
Outside U.S. and Canada
1.630.910.2800



e-mail

Parts Identification
truckparts@hendrickson-intl.com
Technical Support
techservices@hendrickson-intl.com



fax

1.630.910.2899



website

Additional Hendrickson
Product Information
www.hendrickson-intl.com

FRONT STEER AXLE SYSTEMS



AIRTEK®



SOFTEK®



STEERTEK NXT



IFS™



PARASTEER™

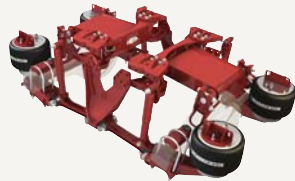
REAR AIR SUSPENSIONS



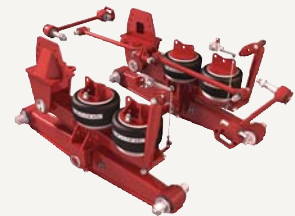
PRIMAAX® EX



COMFORT AIR®



HTB® LT



AR2™



HAS™

WALKING BEAM REAR SUSPENSIONS



HAULMAAX®



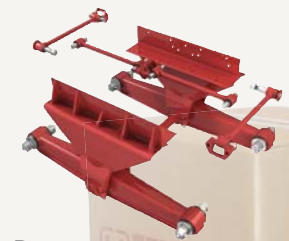
HN®



RT™/RTE™



RS™



R™

OTHER REAR SUSPENSIONS



HTB® MECHANICAL



HTS™



HFS™



Solutions at work



AUXILIARY SPRING KITS

HAULMAAX / HN



64179-004	Standard Spring	
One Set		Qty.
60314-000	Auxiliary Spring	1
60818-002	1/2" Flange Bolt – 2.25"	3
60819-000	1/2" Flange Nut	3



65902-004	Progressive Rate Spring	
One Set		Qty.
67778-000	Progressive Rate Auxiliary Spring	1
60791-000	Auxiliary Spring Shim	2
60818-002	1/2" Flange Bolt – 2.25"	5
60819-000	1/2" Flange Nut	5

BOLSTER SPRING KITS

HAULMAAX / HN



64179-048	HAULMAAX 40K / 46K	
One Set		Qty.
	Tie-bar Bolster Springs	2
	Bolster Spring Spacer	1
	Wear Plate	1
	1/2"-13 UNC 10" Flange Bolt	1
	1/2"-13 UNC Flange Nut	9
	Tie-bar Assembly Instructions	1



64179-037	HAULMAAX 40K / 46K	
One Set		Qty.
	Tie-bar Bolster Springs	2
	Bolster Spring Spacer	1
	1/2"-13 UNC 10" Flange Bolt	1
	1/2"-13 UNC Flange Nut	9



64179-002	HAULMAAX 40K	
One Set		Qty.
	Bolster Springs	2
	1/2"-13 UNC Flange Nut	8



60879-000L	HN 40K / 46K	
One Set		Qty.
	Bolster Springs	2



EQUALIZING BEAM BUSHING KITS

R / RS / RT / RTE

*Bronze Center Bushing Kits – 340-520, 650-700 Series



Kit Shown: 30437-000L

30436-000L	340 Series	
Two Beams		Qty.
30240-001	Bronze Center Bushing	2
14684-000	Beam Center Sleeve	2
30333-000	Beam Center Seal	4
32364-000	Thrust Washer	8
30087-000	Grease Fitting	2



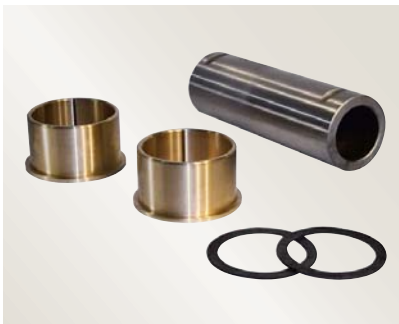
34013-054L	380-520 Series	
One Beam		Qty.
30240-002	Bronze Center Bushing	1
14685-000	Beam Center Sleeve	1
30334-000	Beam Center Seal	2
32365-000	Thrust Washer	4
30087-000	Grease Fitting	1



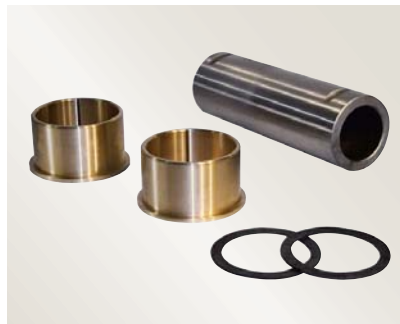
45374-000	650 Series	
Two Beams		Qty.
30240-005	Bronze Center Bushing	2
25102-000	Beam Center Sleeve	2
31577-000	Beam Center Seal	4
45261-000	Thrust Washer	4
30087-000	Grease Fitting	2

30437-000L	380-520 Series	
Two Beams		Qty.
30240-002	Bronze Center Bushing	2
14685-000	Beam Center Sleeve	2
30334-000	Beam Center Seal	4
32365-000	Thrust Washer	8
30087-000	Grease Fitting	2

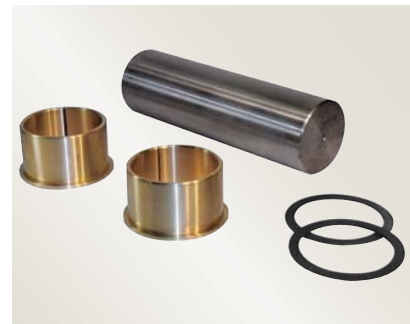
*Bronze Center Bushing Kits – T Series: Hollow / Solid Sleeves



34013-079	T 600 Series	
One Beam		Qty.
• 4" I.D. Bushing ¼" Lip - Hollow Sleeve		
03415-000	Bronze Center Bushing	2
03418-000	Beam Center Sleeve	1
03416-000	Thrust Washer	2



34013-081	T 900 Series	
One Beam		Qty.
• 4" I.D. Bushing ½" Lip - Hollow Sleeve		
08904-000	Bronze Center Bushing	2
03418-000	Beam Center Sleeve	1
03416-000	Thrust Washer	2



Kit Shown: 34013-078

34013-078	T 600 Series	
One Beam		Qty.
• 4" I.D. Bushing ¼" Lip - Solid Sleeve		
03415-000	Bronze Center Bushing	2
10358-000	Beam Center Pin	1
03416-000	Thrust Washer	2

34013-080	T 900 Series	
One Beam		Qty.
• 4" I.D. Bushing ½" Lip - Solid Sleeve		
08904-000	Bronze Center Bushing	2
10358-000	Beam Center Pin	1
03416-000	Thrust Washer	2

* See Equalizing Beam and Components Selection Guide No. 45745-147 for more information



EQUALIZING BEAM BUSHING KITS (CONT.)

AR2 / R / RS / RT / RTE

■ *Rubber End Bushing and Adapter Kits – 340-520, 650-850, 1000-1200 Series



Kit Shown: 34013-049L

34013-049L 440 Series
One Wheel End Qty.

45900-000	End Bushing	1
45000-007L	End Bushing Adapter Kit	1

34013-050L 480-520 Series
One Wheel End Qty.

29878-001	End Bushing	1
21140-034L	End Bushing Adapter Kit	1

34013-048L 340 Series
One Wheel End Qty.

06969-000	End Bushing	1
45000-013L	End Bushing Adapter Kit	1

34013-073L 460 Series
One Wheel End Qty.

45900-000	End Bushing	1
21140-034L	End Bushing Adapter Kit	1

34013-051L 520 Series
One Wheel End Qty.

45407-000	End Bushing	1
21140-033L	End Bushing Adapter Kit	1



Kit Shown: 45000-007L

45000-007L 440 Series
One Wheel End Qty.

21867-023	3/4"-16 UNF Bolt – 6.5"	1
22962-001	3/4" Hardened Washer	2
30191-000	3/4"-16 UNF Locknut	1
45163-000	Beam End Adapter	2
45289-002	Adapter Tube	1

21140-034L 460 Series
One Wheel End Qty.

30550-008	1"- Top Pad Bolt – 10.5"	1
22962-008	1" Hardened Washer	2
08017-000	1"-14 UNS Locknut	1
45871-000	Beam End Adapter	2
45289-004	Adapter Tube	1

45000-013L 340 Series
One Wheel End Qty.

21867-007	3/4"-16 UNF Bolt – 6.0"	1
22962-001	3/4" Hardened Washer	2
30191-000	3/4"-16 UNF Locknut	1
45163-000	Beam End Adapter	2
45289-001	Adapter Tube	1

21140-033L 520 Series
One Wheel End Qty.

30550-010	1"- Top Pad Bolt – 11.0"	1
22962-000	1" Hardened Washer	2
08017-000	1"-14 UNS Locknut	1
45871-000	Beam End Adapter	2
45289-002	Adapter Tube	1



Kit Shown: 21140-007

21140-007 650 Series
One Wheel End Qty.

17491-022	1 7/8"-12 UNF Slotted Nut	2
17800-003	Cotter Pin	2
22057-000	Beam End Adapter	2
21592-003	Beam End Shaft	1

21140-004 850 Series
One Wheel End Qty.

17491-022	1 7/8"-12 UNF Slotted Nut	2
17800-003	Cotter Pin	2
21592-001	Beam End Adapter	2
21593-000	Beam End Shaft	1
45456-000	Thrust Washer	1

21140-024 1000/1200 Series
One Wheel End with Adapter Tube Qty.

17491-022	1 7/8"-12 UNF Slotted Nut	2
17800-003	Cotter Pin	2
21594-000	Beam End Adapter	2
21592-002	Beam End Shaft	1
45425-000	Adapter Tube	1
45456-000	Thrust Washer	1

21140-042 1000/1200 Series
One Wheel End with Tube and Nut Qty.

46558-001	Beam End Shaft	1
46493-000	Beam Hanger Tube	1
46492-000	2"-12 UNF Hex Nut	1
45457-000	2"-12 UNF Locknut	1
46556-000	Hardened Washer	2

* See Equalizing Beam and Components Selection Guide No. 45745-147 for more information



EQUALIZING BEAM BUSHING KITS (CONT.)

AR2 / HAULMAAX / HN / R / RS / RT / RTE

■ Bar Pin End Bushing Kits – 340-520 Series



34013-088L

One Beam End

	Qty.
1"-8 UNC Hex Bolt – 6.0"	2
1" Hardened Washer	4
1"-8 UNC Locknut	2
Bar Pin Shim 0.25" x 0.12"	2
Bar Pin End Bushing (Shim)	1

With Shims

34013-188L

One Beam End

	Qty.
1"-8 UNC Hex Bolt – 6.0"	2
1" Hardened Washer	4
1"-8 UNC Locknut	2
Bar Pin Shim 0.25" x 0.12"	2
Bar Pin End Rotating Bushing (Shim)	1

With Shims

34013-087L

One Beam End

	Qty.
1"-8 UNC Hex Bolt – 6.0"	2
1" Hardened Washer	4
1"-8 UNC Locknut	2
Bar Pin End Bushing (Non Shim)	1

Non-Shim

HEIGHT CONTROL VALVE KITS

AR2 / COMFORT AIR / HAS / PARASTEER / PRIMAAX / PRIMAAX EX



Kit Shown: 57977-000

57977-000

One Side

	Qty.
HCV Integrated Dump Valve	1
HCV Mounting Bracket	1
¼" Hardened Washer	2
¼"-20 UNC Locknut	2

Dump Valve

60826-000

One Side

	Qty.
Height Control Valve	1
HCV Mounting Bracket	1
¼" Flat Washer	2
¼"-20 UNC Locknut	2
Locating Pin	1

Non-Dump Valve

59013-000

One Side

	Qty.
Height Control Valve	1
¼" Hardened Washer	2
¼"-20 UNC Locknut	2

Dump Valve

NOTE: Universal valve replaces both the 50433-001 and 50433-002.



KINGPIN BUSHING AND THRUST BEARING SERVICE KITS

AIRTEK / IFS / SOFTEK / STEERTEK / STEERTEK NXT

■ STEERTEK NXT Axle Kits



60961-629

NXT One Wheel End – LH

		Qty.
68687-003	Grease Cap Assembly, Upper	1
68687-002	Grease Cap Assembly, Lower	1
58909-001	Kingpin Bushing	2
59828-000	Composite Thrust Bearing	1
68731-000	Kingpin Seal	2
60236-001	5/8"-11 UNC Socket Head Cap Screw	2
60937-000	Loctite Tube	1
33117-000	Grease Zerk	1



60961-630

NXT One Wheel End – RH

		Qty.
68687-003	Grease Cap Assembly, Upper	1
68687-002	Grease Cap Assembly, Lower	1
58909-001	Kingpin Bushing	2
64256-000	Roller Thrust Bearing	1
68731-000	Kingpin Seal	2
60236-001	5/8"-11 UNC Socket Head Cap Screw	2
60937-000	Loctite Tube	1
33117-000	Grease Zerk	1



60961-628

NXT Axle Set

		Qty.
68687-003	Grease Cap Assembly, Upper	2
68687-002	Grease Cap Assembly, Lower	2
58909-001	Kingpin Bushing	4
59828-000	LH Composite Thrust Bearing	1
64256-000	RH Roller Thrust Bearing	1
68731-000	Kingpin Seal	4
60236-001	5/8"-11 UNC Socket Head Cap Screw	4
60937-000	Loctite Tube	1
33117-000	Grease Zerk	2

■ STEERTEK Axle / IFS Kits



60961-009

One Wheel End – LH

		Qty.
59156-000	Grease Cap Assembly	2
58937-000	Retaining Ring	2
58909-000	Kingpin Bushing	2
59828-000	Composite Thrust Bearing	1
60236-001	5/8"-11 UNC Socket Head Cap Screw	2
58910-001	Kingpin Seal	2
60259-001	Kingpin Shim 0.005"	4
60259-002	Kingpin Shim 0.047"	1
60937-000	Loctite Tube	1



60961-039

One Wheel End – RH

		Qty.
59156-000	Grease Cap Assembly	2
58937-000	Retaining Ring	2
58909-000	Kingpin Bushing	2
64256-000	Roller Thrust Bearing	1
60236-001	5/8"-11 UNC Socket Head Cap Screw	2
58910-001	Kingpin Seal	2
60259-001	Kingpin Shim 0.005"	4
60259-002	Kingpin Shim 0.047"	1
60937-000	Loctite Tube	1



60961-040

Axle Set

		Qty.
59156-000	Grease Cap Assembly	4
58937-000	Retaining Ring	4
58909-000	Kingpin Bushing	4
59828-000	Composite Thrust Bearing	1
64256-000	Roller Thrust Bearing	1
60236-001	5/8"-11 UNC Socket Head Cap Screw	4
58910-001	Kingpin Seal	4
60259-001	Kingpin Shim 0.005"	8
60259-002	Kingpin Shim 0.047"	2
60937-000	Loctite Tube	1



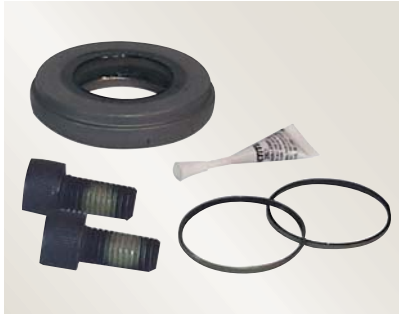
THRUST BEARING SERVICE KITS

AIRTEK / IFS / SOFTEK / STEERTEK / STEERTEK NXT

STEERTEK NXT Kits



60961-631		
NXT One Wheel End – LH		Qty.
59828-000	Composite Thrust Bearing	1
60236-001	5/8"-11 UNC Socket Head Cap Screw	2
68731-000	Kingpin Seal	2
60937-000	Loctite Tube	1



60961-632		
NXT One Wheel End – RH		Qty.
64256-000	Roller Thrust Bearing	1
60236-001	5/8"-11 UNC Socket Head Cap Screw	2
68731-000	Kingpin Seal	2
60937-000	Loctite Tube	1



60961-633		
NXT Axle Set		Qty.
59828-000	Composite Thrust Bearing	1
64256-000	Roller Thrust Bearing	1
60236-001	5/8"-11 UNC Socket Head Cap Screw	4
68731-000	Kingpin Seal	4
60937-000	Loctite Tube	1

STEERTEK / IFS Kits



60961-041		
One Wheel End – LH		Qty.
59828-000	Composite Thrust Bearing	1
60236-001	5/8"-11 UNC Socket Head Cap Screw	2
58910-000	Kingpin Seal	2
60259-001	Kingpin Shim 0.005"	4
60259-002	Kingpin Shim 0.047"	1
60937-000	Loctite Tube	1



60961-042		
One Wheel End – RH		Qty.
64256-000	Roller Thrust Bearing	1
60236-001	5/8"-11 UNC Socket Head Cap Screw	2
58910-000	Kingpin Seal	2
60259-001	Kingpin Shim 0.005"	4
60259-002	Kingpin Shim 0.047"	1
60937-000	Loctite Tube	1



60961-043		
Axle Set		Qty.
59828-000	Composite Thrust Bearing	1
64256-000	Roller Thrust Bearing	1
60236-001	5/8"-11 UNC Socket Head Cap Screw	4
58910-000	Kingpin Seal	4
60259-001	Kingpin Shim 0.005"	8
60259-002	Kingpin Shim 0.047"	2
60937-000	Loctite Tube	1



QUIK-ALIGN® COLLAR AND PIVOT BUSHING KITS

AL405 / COMFORT AIR / FIREMAAX EX / MAXAIR / PRIMAAX EX

Popular Kits



60632-001	COMFORT AIR	
Axle Set		Qty.
64632-000	Eccentric Collar	1
64633-000	Concentric Collar	3
64107-000	1"-8 UNC Bolt – 7.5"	2
22962-035	1" Hardened Washer	4
64108-000	1"-8 UNC Locknut	2



60683-001	MACK-AL405/MAXAIR	
Tandem Set		Qty.
60496-000	Eccentric Collar	2
60497-000	Concentric Collar	6
58705-003	7/8"-8 UNC Bolt – 7.5"	4
22962-034	7/8" Hardened Washer	8
60266-000	7/8"-8 UNC Locknut	4
58648-000	Pivot Bushing	4



60632-020	*PAX EX/FMX EX/PAX/FMX	
Axle Set		Qty.
64632-000	Eccentric Collar	2
64633-000	Concentric Collar	2
68217-000	1"-14 UNF Bolt – 7.5"	2
68232-000	1" Hardened Washer	4
68218-000	1"-14 UNF Locknut	2
58648-000	Pivot Bushing	2



60632-021	*PAX EX/FMX EX/PAX/FMX	
Axle Set		Qty.
64632-000	Eccentric Collar	2
64633-000	Concentric Collar	2
68217-000	1"-14 UNF Bolt – 7.5"	2
68232-000	1" Hardened Washer	4
68218-000	1"-14 UNF Locknut	2



60682-001	MACK-AL405/MAXAIR	
One Wheel End		Qty.
60662-000	Eccentric Collar	1
60661-000	Concentric Collar	1
58705-003	7/8"-8 UNC Bolt – 7.5"	1
22962-034	7/8" Hardened Washer	2
60266-000	7/8"-8 UNC Locknut	1
58648-000	Pivot Bushing	1



34013-103	**COMFORT AIR	
One Wheel End		Qty.
64107-000	1"-8 UNC Bolt – 7.5"	1
22962-035	1" Hardened Washer	2
64108-000	1"-8 UNC Locknut	1
58648-000	Pivot Bushing	1
64817-000	Plastic Isolator Puck	2



60632-019	*PAX EX/FMX EX/PAX/FMX	
One Wheel End		Qty.
64632-000	Eccentric Collar	1
64633-000	Concentric Collar	1
68217-000	1"-14 UNF Bolt – 7.5"	1
68232-000	1" Hardened Washer	2
68218-000	1"-14 UNF Locknut	1



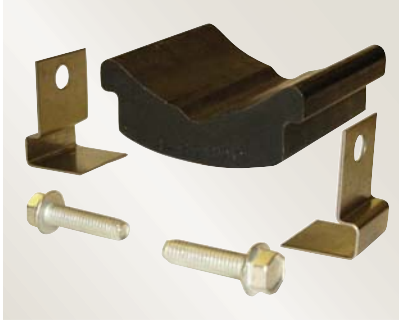
60632-018	*PAX EX/FMX EX/PAX/FMX	
One Wheel End		Qty.
68217-000	1"-14 UNF Bolt – 7.5"	1
68232-000	1" Hardened Washer	2
68218-000	1"-14 UNF Locknut	1

* PRIMAAX EX / FIREMAAX EX / PRIMAAX / FIREMAAX — All models / capacities
 ** Not used for Hino Vehicles



SLIPPER PAD KITS

HAS / HA



Kit Shown: 56557-004

56557-001

One Hanger

56908-000	HA Slipper Pad	1	HA
50597-000	HAS Retainer Plate	2	Qty.
57306-000	3/8" Rolok Screw – 1.5"	4	

56557-002

One Hanger

50612-000	HAS Slipper Pad	1	HA/HAS
50597-000	HAS Retainer Plate	2	Qty.
57306-000	3/8" Rolok Screw – 1.5"	4	

HA
Qty.

56557-004

One Hanger

56929-000	HAS Slipper Pad	1	HAS
57566-000	HAS Retainer Clip	2	Qty.
57306-000	3/8" Rolok Screw – 1.5"	2	

56557-005

One Hanger

56929-000	HAS Slipper Pad	1	HAS
58287-001	Slipper Pad Lock Pin – 1"	2	Qty.

HAS
Qty.

HAS
Qty.

SPRING MOUNTING KITS

RT / RTE



Kit Shown: 29828-034L



29828-023

One Wheel End

00194-000	Rebound Bolt Spacer	1	Qty.
24531-005	1/2"-13 UNC Bolt – 6.5"	1	
49846-000	1/2"-13 UNC Locknut	1	

29828-034L

Vehicle Set

00194-000	Rebound Bolt Spacer	2	Qty.
24531-005	1/2"-13 UNC Bolt – 6.5"	2	
24531-009	1/2"-13 UNC Bolt – 4.0"	4	
22962-011	1/2" Hardened Washer	8	
49846-000	1/2"-13 UNC Locknut	6	
43146-000	Spring Hanger Pin	2	
33117-000	Grease Zerk	2	

00062-001L

One Hanger

00062-000	Spring Hanger Drawkey	1	Qty.
17341-000	1/2" Lockwasher	1	
17351-000	1/2"-13 UNC Hex Nut	1	

29828-035L

One Wheel End

24531-009	1/2"-13 UNC Bolt – 4.0"	2	Qty.
22962-011	1/2" Hardened Washer	4	
49846-000	1/2"-13 UNC Locknut	2	



*TIE ROD END KITS

AIRTEK / SOFTEK / STEERTEK / STEERTEK NXT



Kit Shown: 60961-010

60961-010

Straight Tie Rods – 69 KPI, 4.25" Drop

Axle Set

		Qty.
64000-001	LH Tie Rod End	1
64000-002	RH Tie Rod End	1
22962-007	7/8" Hardened Washer	2
17800-004	Cotter Pin	2

60961-011

Straight Tie Rods – 70.9 KPI, 4.25" Drop

Axle Set

		Qty.
64002-001	LH Tie Rod End	1
64002-002	RH Tie Rod End	1
22962-007	7/8" Hardened Washer	2
17800-004	Cotter Pin	2

60961-082

Straight Tie Rods – 70.9 KPI, 4.25" Drop

Axle Set

		Qty.
65034-001	LH Tie Rod End	1
65034-002	RH Tie Rod End	1
22962-007	7/8" Hardened Washer	2
17800-004	Cotter Pin	2



Kit Shown: 60961-085

60961-085

Straight Tie Rods – 70.9 KPI, 4.25" Drop

Left Hand

		Qty.
65034-001	Tie Rod End	1
22962-007	7/8" Hardened Washer	1
17800-004	Cotter Pin	1

60961-086

Straight Tie Rods – 70.9 KPI, 4.25" Drop

Right Hand

		Qty.
65034-002	Tie Rod End	1
22962-007	7/8" Hardened Washer	1
17800-004	Cotter Pin	1

60961-025

Straight Tie Rods – 69 KPI, 4.25" Drop

Left Hand

		Qty.
64000-001	Tie Rod End	1
22962-007	7/8" Hardened Washer	1
17800-004	Cotter Pin	1

60961-026

Straight Tie Rods – 69 KPI, 4.25" Drop

Right Hand

		Qty.
64000-002	Tie Rod End	1
22962-007	7/8" Hardened Washer	1
17800-004	Cotter Pin	1



Kit Shown: 60961-137

60961-137

Drop Tie Rods – 69/70.9 KPI, 5.36" Drop

Left Hand

		Qty.
66645-001	Tie Rod End	1
22962-007	7/8" Hardened Washer	1
17800-004	Cotter Pin	1

60961-138

Drop Tie Rods – 69/70.9 KPI, 5.36" Drop

Right Hand

		Qty.
66645-002	Tie Rod End	1
22962-007	7/8" Hardened Washer	1
17800-004	Cotter Pin	1

60961-139

Drop Tie Rods – 69/70.9 KPI, 5.36" Drop

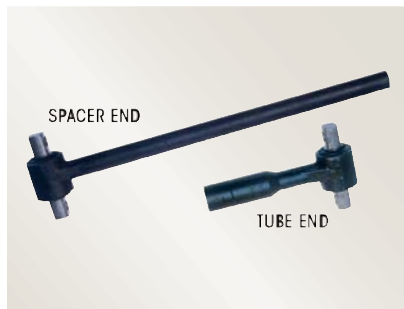
Axle Set

		Qty.
66645-001	LH Tie Rod End	1
66645-002	RH Tie Rod End	1
22962-007	7/8" Hardened Washer	2
17800-004	Cotter Pin	2

* See Hendrickson Technical Bulletin No. SEU-0223 for more information on tie rod ends.

TORQUE ROD KITS – ULTRA ROD® TWO-PIECE

AR2 / COMFORT AIR / HAS / HAULMAX / HN / PRIMAAX EX / R / RS / RT / RTE



60218-000

		Qty.
66610-000	Tube End, 5/8" Hole Dia. 47691-000H Bushing	1
66661-000	Spacer End, 5/8" Hole Dia. 47691-000H Bushing	1

60215-000

		Qty.
66610-000	Tube End, 5/8" Hole Dia. 47691-000H Bushing	1
66681-000	3" Taper End 64697-000H Bushing	1

60223-000

		Qty.
66610-000	Tube End, 5/8" Hole Dia. 47691-000H Bushing	1
66660-000	Spacer End, 5/8" Hole Dia. 47691-000H Bushing	1

60220-000

		Qty.
66610-000	Tube End, 5/8" Hole Dia. 47691-000H Bushing	1
66691-000	1 7/8" Taper End 66735-000H Bushing	1



AIR SPRINGS

AIRTEK / AL405 / COMFORT AIR / HA / HAS / PRIMAAX



Part Shown: 66349-002L

Part No.	Front Model
65790-002L	AIRTEK - Spartan Motorhome Chassis 12.6K/14.6K
66349-002L	AIRTEK - Volvo, Mack, Spartan Motorhome Chassis 10.5/12.5K
69116-002	AIRTEK - Freightliner, Western Star, Sterling



Part No.	Front Model
60716-002L	AIRTEK - Volvo, Mack 13.2/14.6K



Part Shown: 50405-002L

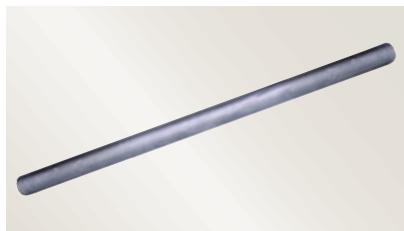
Part No.	Rear Model
50405-002L	HA
50898-002L	HAS 40LH
50899-002L	HAS for Mack
57122-002L	HAS
58520-002L	HAS
60271-002L	PRIMAAX
60929-002	COMFORT AIR
64651-002L	HAS for Mack
64917-002L	AL405
67043-002L	PRIMAAX EX



Part No.	Rear Model
58786-002	AL405 / MAXAIR

CROSS TUBES

HA / R / RS / RT / RTE



Part Shown: 44643-009L

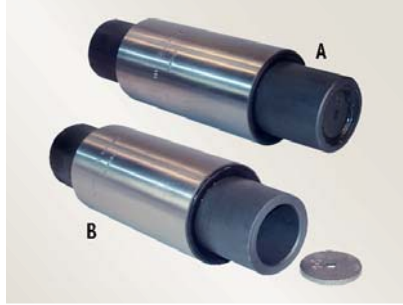
Part No.	REAR Model	Length
44642-022	HA 360-460, RT/RTE 340	36½"
	R/RS/RT	
44643-009L	343-503 Series	44⅞"
44642-008L	340 Series	44⅞"
10397-014	650 Series	40¾"
07622-003	523 Series	46"



EQUALIZING BEAM BUSHINGS

AR2 / R / RS / RT / RTE

■ Rubber Center Bushings 340 – 650 Series



340 Series

A: 06664-000L

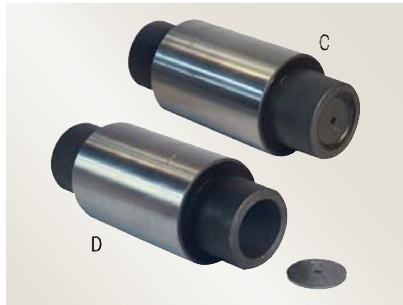
B: 22279-000L – loose plug



400 Series

E: 49400-000L High Confinement

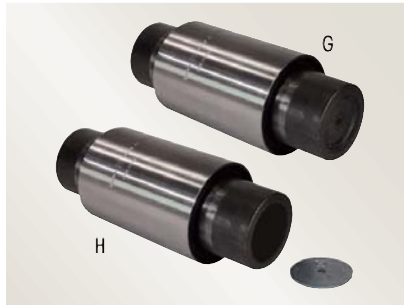
F: 49600-000L High Confinement – loose plug



380 Series

C: 05919-000L

D: 22282-000L – loose plug



380-523 Series

G: 29483-005L

H: 34013-097L – loose plug

650 Series

10366-000L

■ Rubber End Bushings



Part Shown: 45900-000L

Part No.	Model	Length
06966-000L	280 Series	4½"
06969-000L	340 Series	5¼"
45900-000L	460 Series	5¾"
29878-001L	480-520 Series	5¾"
45407-000L	520 Series	6"
10363-000L	650 Series	6"
10364-000	850 Series	7"

Popular Parts

FRONT LEAF SPRINGS AND BUSHINGS

AIRTEK / SOFTEK



Part Shown: 59930-021

Part No.	Model
59930-021	AIRTEK - Freightliner, Western Star
64772-000	AIRTEK - Volvo, Mack
66420-000	AIRTEK - International Truck Vehicles
66626-001	SOFTEK - Blue Bird All American Buses, 14.6K

■ Spring Eye Bushings

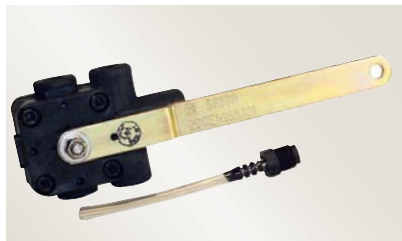


Part No.	Model
59259-002	AIRTEK w/STEEERTEK Axle- Freightliner, Western Star, Sterling



HEIGHT CONTROL VALVES

AIRTEK / HAS / AL405 / MAXAIR



Part Shown: 59899-000

Part No.	Model
59899-000	HAS, AL405 / Maxair
59935-013	AIRTEK - LH Freightliner, Western Star, Sterling
59935-002	AIRTEK - RH Freightliner, Western Star, Sterling

Part No.	Model
60501-000	AIRTEK - Blue Bird Bus 14.6K, COMFORT AIR, HTB 210, PARASTEER, HAS Integrated Dump Valve
64089-000L	AIRTEK - Volvo, Mack

LOAD CUSHIONS AND BUSHINGS

RS SERIES



Part Shown: 26953-000L

Part No.	Model
48973-000L	340/400 Series
26953-000L	460/520 Series



Part No.	Model
24209-000	Center Load Cushion

Vertical Drive Bushing



RS Series
19279-000L

MAIN SUPPORT MEMBERS

HAS / HA / AL405 / MAXAIR



Part Shown: 56946-000

Part No.	REAR Model	Thickness
56946-000	HAS 230/402/460	2.00"
56943-000	HAS 210/400	1.88"
57217-000	HAS 40LH	1.75"
56940-000	HAS 190/360	1.75"
56871-001	HA 400	1.88"
48645-001	HA 460	2.38"



Part Shown: 58691-000

Part No.	REAR Model
58691-000	AL405 / MAXAIR - LH
58768-000	AL405 / MAXAIR - RH



POPULAR FASTENERS



Part No. 48574-000
Description Spherical Washer



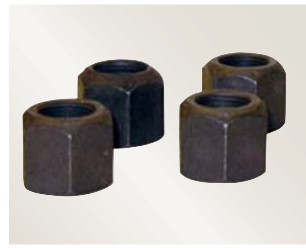
Part Shown: 22962-002

Part No. 22962-002
Description 7/8" Hardened Washer

Part No. 22962-006
Description 1" Hardened Washer



Part No. 06696-000
Description 7/8"-14 UNF Saddle Cap Stud



Part No. 08017-000
Description 1"-14 UNS Locknut

SHOCK ABSORBERS

AIRTEK / COMFORT AIR / HAS / HAULMAAX / HN / HTB 400LT / PRIMAAX EX



Part Shown: 58913-003L

Part No. 58913-003L
Front Model AIRTEK - Freightliner, Western Star, Sterling

64838-002L AIRTEK w/STEEERTEK Axle—
Volvo 12/12.5K, 13.2/14.6K
Mack 12/12.5K, 13.2/14.6K

64838-003L AIRTEK w/STEEERTEK NXT Axle—
Volvo 12/12.5K, 13.2/14.6K
Mack 12/12.5K, 13.2/14.6K

65992-001 AIRTEK - International Truck
Vehicles



Part Shown: 60685-001L

Part No. 60657-003
Rear Model PRIMAAX EX / FIREMAAX EX /
PRIMAAX / FIREMAAX

60657-005 8½", 10" Ride Height

60657-005 Kenworth Tridem

60657-007 Volvo

60665-011 12½", 14¾", 15½" Ride Height,
232T/462T/692T/262S/522S

60657-008 HTB 400LT
HAS

60670-003L 150L

60670-005L 190/210/230/
360/400/402/460

60670-006L 210/230/400/402/460
Volvo/Mack

60670-007L 400/402/460
Inboard Standard

60670-008L 190L/210L/230L/
400L/402L/460L

HAS HI-TORQUE™

60675-001L 190/230/400/460 - Volvo/Mack

60675-003L 190/210/230

60675-005L 400/460

60675-006L 400/402/460 - Inboard

60685-001L 40LH

60998-003 COMFORT AIR



Part Shown: 60680-003L

Part No. 57241-006L
Rear Model AL405

60680-003L HN

60680-004L HAULMAAX 16.5" Saddle Ht.

60680-005L HAULMAAX 17.5"/18.5" Saddle Ht.

Popular Parts



SADDLE ASSEMBLIES



RT / RTE SERIES

Part No.	Model	Height
31017-022L	343/400/403	6"
31017-109L	403	7 ³ / ₈ "
31017-096L	460/463	6"
31017-110L	460/463	7 ³ / ₈ "
31017-053	523 – RT Only	6"
31017-077	523	7 ³ / ₈ "
31017-004	650	7 ¹ / ₈ "

Part Shown: 31017-096L

SPRINGS

RT / RTE



Part Shown: 47057-000

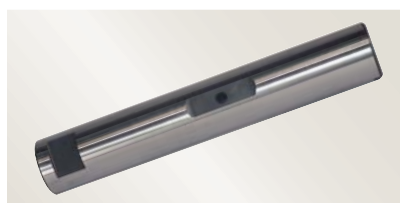
Part No.	Model
45027-000	RT 400/403
47057-000	RT 460/463/480/503/ 520/523
02056-000	RT 650



Part Shown: 45322-000

Part No.	Model
45121-000	RTE 400/403
45322-000	RTE 460/463/480/503

Spring Hanger Pins



Part Shown: 32276-000

Part No.	Model	Dia.
32276-000	Use with Draw Key 00062-001	1 ¹ / ₄ "
32277-000	Use with Draw Key 00062-001	1 ³ / ₈ "
43146-000L	Double Lock Style Hanger	1 ³ / ₈ "
00005-000	Use with Draw Key 00081-001	1 ¹ / ₂ "
45797-000	Double Lock Style Hanger	1 ¹ / ₂ "

Spring Eye Bushings



Part Shown: 30057-007L

Part No.	Model	I.D.
30057-007L	340 Series	1 ¹ / ₄ "
30057-008L	400–520 Series	1 ³ / ₈ "
22285-000	650 Series	1 ¹ / ₂ "

SPRING SEATS



Part Shown: 56563-000

AL405 / *HA / *HAS SERIES

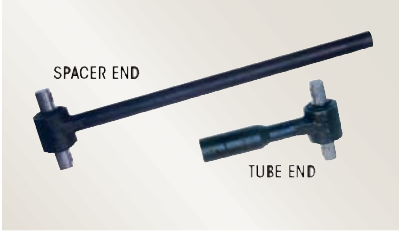
Part No.	Model
56563-000	AL405 for Mack-6" RHF/RHR
56562-000	AL405 for Mack-6" LHF/LHR

* Refer to Parts List Lit. No. SP-149 for HAS and SP-179 for HA Spring Seats.



***TORQUE RODS**

ULTRA ROD® TWO-PIECE TORQUE RODS



Spacer End – Straddle

Part No.	Length	Bushing
66661-000H	27"	47691-000H
66660-000H	35"	47691-000H

Tube End – Straddle

Part No.	Bushing
66610-000H	47691-000H



Spacer End – Taper Pin

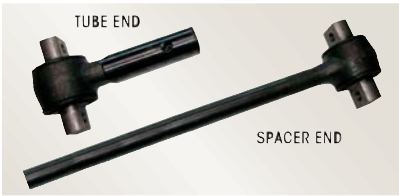
Part No.	Length	Bushing
66681-000H	27"	64697-000H
66691-000H	27"	66735-000H
66671-000H	27"	64809-000H
66680-000H	35"	64697-000H
66690-000H	35"	66735-000H
66670-000H	35"	64809-000H

ONE-PIECE TORQUE RODS



Part No.	Length	Bushing
62007-365	14 ³ / ₈ "	47691-000H
49681-001	14 ⁷ / ₈ "	47691-000H
57950-007	14 ⁷ / ₈ "	47691-000H
58757-005	21 ¹ / ₂ "	47691-000H
58757-006	22"	47691-000H
62000-565	22 ¹ / ₄ "	47691-000H
62700-570	22 ⁷ / ₈ "	69210-000H
58757-615	24 ¹ / ₄ "	47691-000H

ULTRA ROD® PLUS™ TWO-PIECE TORQUE RODS



Spacer End – Straddle

Part No.	Length	Bushing
46661-001	30"	64400-002
46681-001	30"	64400-004

Tube End – Straddle

Part No.	Bushing
46610-001	64400-002



****Spacer End**

Part No.	Length	I.D.
64474-000	30"	2 ³ / ₄ "

****Tube End**

Part No.	I.D.
64473-000	2 ³ / ₄ "

* See Torque Rod Selection Guide Literature No. 45745-148 for information on bushing use and configurations.

** Empty end hubs, add bushing to achieve desired configuration.

TORQUE RODS BUSHINGS



Part Shown: 47691-000L

Part No.	Type	Bushing O.D.	Hole Dia.	Mtg. Ctrs.
47691-000L	Straddle	2"	5/8"	4"
64400-002L	Straddle	3/4"	5/8"	4"



Part Shown: 44695-000L

Part No.	Type	Bushing O.D.	Hole Dia.	Mtg. Ctrs.
44694-000L	Straddle	2 ¹ / ₂ "	5/8"	4 ³ / ₈ "
44695-000L	Straddle	2 ³ / ₄ "	5/8"	4 ³ / ₈ "
49210-000L	Straddle	2 ³ / ₄ "	3/4"	4 ³ / ₈ "
57256-000L	Straddle	2 ¹ / ₂ "	5/8"	4 ³ / ₈ "
48304-000L	Straddle	3 ¹ / ₂ "	7/8"	5 ¹ / ₄ "

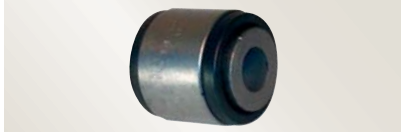


Part No.	Type	Hole Dia.	Mtg. Ctrs.
47699-001L	Offset Straddle	3/4"	5 ¹¹ / ₁₆ "



Part Shown: 44697-000L

Part No.	Type	Taper Threads	Length
44697-000L	Taper	1 ¹ / ₄ "	3"
46735-000L	Taper	1 ¹ / ₄ "	1 ⁷ / ₈ "



Part Shown: 45477-000L

Part No.	Type	Length	Bushing O.D.	Hole Dia.
45477-000L	Thru Hole	3 ¹ / ₄ "	3"	1 ¹ / ₈ "
46736-000L	Thru Hole	3 ¹ / ₄ "	2 ³ / ₄ "	1 ¹ / ₈ "
47692-000L	Thru Hole	3"	2"	7/8"

Popular Parts



Solutions at Work

www.hendrickson-intl.com



HENDRICKSON

Truck Commercial Vehicle Systems
800 South Frontage Road
Woodridge, IL 60517-4904 USA

1.866.755.5968 (Toll-free U.S. and Canada)
630.910.2800 (Outside U.S. and Canada)
Fax 630.910.2899