



09

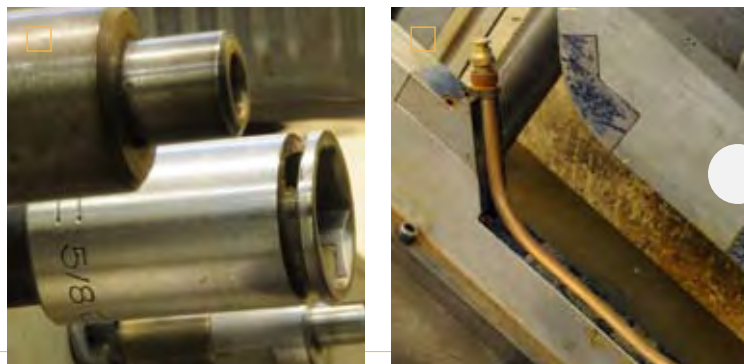
THE WORLD'S
LEADING SUPPLIER OF
**SAFETY, ACCURACY
& EFFICIENCY**
IN TIRE INFLATION.





HALTEC CORPORATION

HALTEC CORPORATION USES NUMEROUS STATE-OF-THE-ART AUTOMATIC C&C TURNING MACHINES DURING OUR MANUFACTURING PROCESS.



HALTEC STOCKS VALVES FOR ALL APPLICATIONS: AUTOMOTIVE, TRUCK, BUS, AGRICULTURAL, AND OFF-ROAD.



HALTEC HAS BEEN REGISTERED AS AN ISO CERTIFIED COMPANY SINCE 1998. OUR MANUFACTURING QUALITY AND INSPECTION PROCESSES ARE ASSESSED BY AN INDEPENDENT CERTIFICATION BOARD EVERY SIX MONTHS.

HALTEC - 2009

TIRE VALVE SYSTEMS & TECHNOLOGY FOR THE WORLD

For nearly 40 years, Haltec Corporation has been the leader in the tire valve industry. When underground mines were transitioning from rail wheels to rubber tires, Haltec was there to design and manufacture the tire valve systems required to meet their technical needs.

Haltec maintains its leadership position as a major manufacturer of specialized tire valve systems. Many new product innovations were introduced by Haltec, including the Full-Flo and Super Large Bore valve designs. These designs provided the tire industry the unique products required to achieve faster flow

rates, decreased downtime and more efficient tire management. The ever increasing size of mining and construction tires further challenged Haltec engineering to design and manufacture our wide variety of valve systems to meet these demands. These include the Mega Bore Tire Valve System, which has a twenty-five time faster rate of flow than a large bore valve.

Today, Haltec Corporation is recognized worldwide as the leading manufacturer of specialty tire valve systems and pressure inflation hardware. Haltec's 45,000 square foot facility in Salem, Ohio maintains its corporate headquarters, manufac-

turing, design, engineering and distribution services. As an ISO 9001/2000 With Design certified company, Haltec Corporation's Quality Policy is to lead the tire valve industry by meeting or exceeding industry standards and customer requirements at a competitive price. Our on-site engineering and custom design department is complemented with a state-of-the art machine shop and soldering, fabrication, custom-bending and product assembly services, all prepared to produce products to meet your inflation and pressure maintenance needs. Haltec has refined a global network of distribution channels and continues to grow sales to its target markets.

We here at Haltec hope you, our customer, will find this catalog easy to use and informative. We have included "Tech Tips"

throughout the text, providing information on proper inflation and our products. You will also find many product innovations, like our IN-95 inflation gun for use with our Super Large Bore, Z-Bore and Mega Bore lines. The IN-95 allows for the removal and replacement of the core housing in all three product lines.

Haltec Corporation's products and services are designed to provide safe, efficient and accurate tire inflation. Our goal is to provide the tire industry with the equipment and training required to enhance any organization's "Tire Management Program." Whether using air or nitrogen, the tire's psi and tread depth need to be accurate, and the method of inflation must be safe, simple and fast.

TIRE VALVE SYSTEMS

□ BACKGROUND

The Super Large Bore System was introduced in 1972 and was designed to allow significantly greater air flow than the Large Bore Valve which was introduced much earlier. Today, vehicle and tire sizes are increasing again. In response to the increases in tire size, Haltec has introduced two new tire valve systems to make inflation and deflation of large tires easier and quicker than ever before: Z-Bore and Mega Bore.

□ SYSTEM COMPARISONS

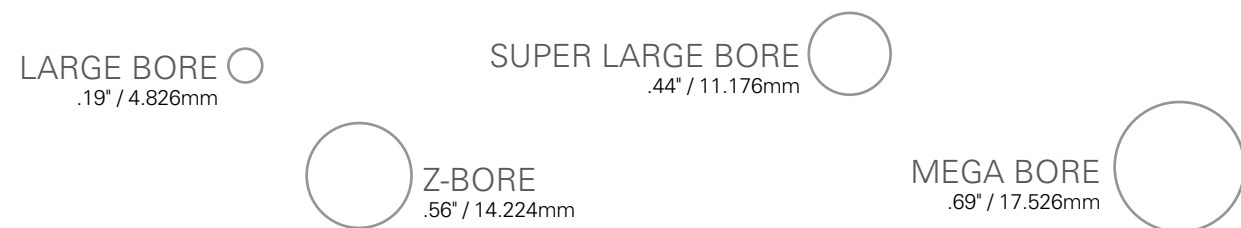
The chart below demonstrates the general characteristics of the four valve systems:

VALVE SYSTEM	FLOW RATE (CFM)	FITS VALVE HOLE	HOLE SIZE THREADED	SPECIAL INFLATOR NEEDED	RECOMMENDED FOR TIRE SIZES
LARGE BORE	22*	13/16"	1/2" NPT	-	11.25" - 29"
SUPER LARGE BORE	240	13/16"	1/2" NPT	IN-80A/IN-95	20" up to 57"
Z-BORE	370	13/16"	1/2" NPT	Z-12/IN-95	33" up to 57"
MEGA BORE	550	15/16"	3/4" NPT	MB-8/IN-95	45" up to 63"

* Flow Rate is without valve core installed. With core, flow rate is 12 CFM. Flow rates on the Super Large Bore, Z-Bore, and Mega Bore Valves were tested with a 750 CFM diesel-powered air compressor with the pressure held constant at 100 PSI.

□ FLOW DIAMETERS:

Shown below is a cross-section of the different flow diameters on the four valve systems. How these increased air flows are accomplished, often using the same rim hole size, will be explained in further detail in this catalog:



□ TABLE OF CONTENTS

- Intro2-3
- Tire Valve Systems4
- Large Bore Valve System6-13
- Super Large Bore Valve System14-19
- Z-Bore Valve System20-22
- PT Valve System.....23-24
- Mega Bore Valve System25-27
- O-Rings and L-Rings28
- Standard Bore Valves.....29-31
- Valve Extensions.....32-33
- Special Application Products34-35
- Air Liquid Valves, Tools and Accessories36
- Liquid Fill Tools37
- Valve Cores, Caps and Adaptors.....38
- Grommets, Hex Nuts and Washers39
- Service Gauges.....40-41
- Digital & Dial Gauges.....42
- Large Bore Gauges, Service Tools and Chucks43-44
- Standard Bore Air Chucks.....45-46
- Standard Bore Tools47
- Tyre Check48-49
- Automatic Tire Inflators50-55
- Inflators.....56-57
- Couplers and Nipples.....58-59
- Alcoa New Products60
- Alcoa Axle End Covers61
- Alcoa Lug Nuts62
- Alcoa Lug Nut Covers.....63
- Alcoa Wheel Cover Kits64-66
- Bead Breakers/Bead Breaker Pumps67
- Hydraulic Rams and Jacks.....68
- Ken-Tool Products.....69-77
- Index.....78
- Policy/Warranty.....79



LARGE BORE VALVE SYSTEMS

The Large Bore Valve System is the oldest of the four off-road tire valve systems. Below are the basic components of a Large Bore Valve System.

- 1 There are three basic spud designs:
 - a. The standard clamp-in spud (H-41)
 - b. The temporary outside-in clamp-in spud (K-431)
 - c. The screw-in spud (C-10)
- 2 Into one of these spuds you screw a Large Bore Swivel Valve. While all Large Bore Valves vary in bend, length, and appearance, they all have a swivel feature. An o-ring seals into the valve spud and is tightened down with a swivel nut.
- 3 To service the inside dual there are three types of extensions offered:
 - a. A rigid extension (867 Series)
 - b. A hand-bendable extension (753S Series)
 - c. A flexible extension (810F Series)

All Large Bore Valves can be serviced with any of the Large Bore air chucks, gauges, and tools found in the Haltec Catalog. As with all off-road valve systems, there are many customized products available. You will also find many customized bent extensions in use.



SINGLE BEND SWIVEL VALVES

HALTEC NO.	TR NO.	BEND ANGLE	"L" HORIZ. LENGTH		"H" VERTICAL HEIGHT	
			INCHES	MM	INCHES	MM
N-1418	-	74°	1 3/4	44.5	1 5/64	27.4
WH-300-J-650	J-650	80°	3 1/8	79.4	1 5/64	27.4
WH-300-J-653	J-653	80°	2 1/2	63.5	1 5/64	27.4
WH-300-J-657	J-657	80°	4	101.6	1 5/64	27.4
WH-300-4 1/2	-	80°	4 1/2	114.3	1 5/64	27.4
WH-300-J-658	J-658	80°	5 1/2	139.7	1 5/64	27.4
WH-300-9	-	80°	9	228.6	1 5/64	27.4
WH-44-6	-	strt.	6	152.4		
WH-45-2 1/2	J-4000-2 1/2	90°	2 1/2	63.5	1 5/64	27.4
WH-45-4	-	90°	4	101.6	1 5/64	27.4
WH-45-4 1/2	J-4000-4 1/2	90°	4 1/2	114.3	1 5/64	27.4
WH-45-5	-	90°	5	127	1 5/64	27.4
WH-45-6	J-4000-6	90°	6	152.4	1 5/64	27.4
WH-45-7 1/2	J-4000-7 1/2	90°	7 1/2	190.5	1 5/64	27.4
WH-45-8	-	90°	8	203.2	1 5/64	27.4
WH-45-9	J-4000-9	90°	9	228.6	1 5/64	27.4
WH-45-10	-	90°	10	254	1 5/64	27.4
WH-45-10 1/2	-	90°	10 1/2	266.7	1 5/64	27.4
WH-45-12	-	90°	12	304.8	1 5/64	27.4
WH-45-13	-	90°	13	330.2	1 5/64	27.4
WH-45-24	-	90°	24	609.6	1 5/64	27.4
WH-45-28	J-4000-28	90°	28	711.2	1 5/64	27.4
WH-45-29 1/2	J-4000-29 1/2	90°	29 1/2	749.3	1 5/64	27.4
WH-45-30	-	90°	30	762	1 5/64	27.4
WH-45-32	-	90°	32	812.8	1 5/64	27.4
WH-45-36	-	90°	36	914.4	1 5/64	27.4
WH-46-J-651	J-651	90°	4 11/16	119	1 17/64	32.1
WH-46-4 1/2	-	90°	4 1/2	114.3	1 17/64	32.1
WH-46-9	-	90°	9	228.6	1 17/64	32.1
WH-47-J-652	J-652	86°	5 1/2	139.7	1 5/64	27.4
WH-47-4 1/2	-	86°	4 1/2	114.3	1 5/64	27.4
WH-47-9	-	86°	9	228.6	1 5/64	27.4
WH-48-J-655	J-655	74°	3 1/8	79.4	1 5/64	27.4
WH-49-J-654	J-654	60°	3 1/8	79.4	1 5/64	27.4
WH-50-J-659	J-659	90°	3 1/2	88.9	1 57/64	50.4
WH-50-J-660	J-660	90°	8 3/4	222.3	1 57/64	50.4
WH-50-6	-	90°	6	152.4	1 57/64	50.4
WH-50-7 1/2	-	90°	7 1/2	190.5	1 57/64	50.4
WH-51-J-668	J-668	90°	4 11/16	119	5 1/8	130.2
WH-52-2	-	25°	2	50.8	1 5/64	27.4
WH-53-5 1/2	-	80°	5 1/2	139.7	1 21/64	33.8
WH-54-6	-	90°	6	152.4	2 25/64	60.8
WH-55-2 1/2	-	90°	2 1/2	63.5	2 25/64	60.8
WH-55-8 1/2	-	90°	8 1/2	216.2	2 25/64	60.8
WH-56-3	-	65°	3	76.2	1 5/64	27.4
WH-57-3	-	80°	3	76.2	1 5/64	27.4
WH-58-2 1/2	-	60°	2 1/2	63.5	2 1/8	54
WH-59-J-656	J-656	90°	3 11/16	93.7	2 5/8	66.7



Any other lengths can be ordered. All valves equipped with core and hex cap. On lengths over 6", 2 lock nuts are furnished.

TECH TIP
ALL LARGE BORE SWIVEL VALVES CAN BE USED WITH ANY OF THE RIM SPUDS FEATURED ON PAGE 8.

LARGE BORE VALVES

THREAD SEALANT SHOULD ALWAYS BE USED ON PIPE THREADS.
NINETY-FIVE PERCENT OF LARGE BORE VALVES USE 13/16" THREAD.



DOUBLE BEND SWIVEL VALVES

HALTEC NO.	TR NO.	BEND ANGLE	HORIZONTAL INCHES	LENGTH MM	VERTICAL INCHES	HEIGHT MM
WH-70-J-661	J-661	82°-8"	4 1/2	114.3	1 5/64	27.4
WH-70-J-661-10 1/2	-	82°-8"	10 1/2	266.7	1 5/64	27.4
WH-70-J-661-25 1/2	-	82°-8"	25 1/2	647.7	1 5/64	27.4
WH-70-J-661-28	-	82°-8"	28	711.2	1 5/64	27.4
WH-70-J-664	J-664	90°-13°	8 3/4*	222.3	1 5/64	27.4
WH-70-J-664-12 1/2	-	90°-13°	12 1/2*	317.5	1 5/64	27.4
WH-70-J-667	J-667	90°-11°	7 1/2*	190.5	1 5/64	27.4
WH-71-J-9	-	55°-35°	9	228.6	1 33/64	38.5
WH-72-J-21 1/4	-	70°-20°	21 1/4	539.8	1 5/64	27.4
WH-72-J-28	-	70°-20°	28	711.2	1 5/64	27.4
WH-73-J-21 1/4	-	60°-30°	21 1/4	539.8	1 3/8	34.9

*BENT AWAY FROM RIM

ANY OTHER LENGTHS CAN BE ORDERED.
ALL VALVES EQUIPPED WITH CORE AND HEX CAP.
ON LENGTHS OVER 6", 2 LOCK NUTS ARE FURNISHED.

TRIPLE BEND SWIVEL VALVES

HALTEC NO.	TR NO.	BEND ANGLE	HORIZONTAL INCHES	LENGTH MM	VERTICAL INCHES	HEIGHT MM
WH-75-J-662	J-662	90°-20°-20°	14	355.6	1 5/64	27.4
WH-75-J-662-10 1/2	-	90°-20°-20°	10 1/2	266.7	1 5/64	27.4
WH-75-J-663	J-663	90°-8°-8°	25	635	1 5/64	27.4
WH-75-J-665	J-665	90°-13°-13°	32	812.8	1 5/64	27.4
WH-75-J-666	J-666	84°-6°-31°-31°	20 1/8	511.2	1 5/64	27.4



RIM SPUDS

H-41 TUBELESS SPUD TR-SP-2

Fits 13/16" rim hole. Used with all Large Bore Swivel valves.



C-10 LARGE BORE SCREW-IN-SPUD TR-SP-3

Screws into a 1/2" NPT tapped hole in the rim. Can be replaced without dismounting tire.

K-431 CLAMP-IN TYPE SPUD

Installed from rim side for replacement without dismounting tire. Use #A-310, 5/16" Allen wrench to hold spud while installing. Do not use in continuous service. Temporary use only.



AIR WATER VALVE

Used in conjunction with WH-330-J-694 Large Bore valve.

HALTEC NO.	TR NO.	BEND ANGLE	"L" HORIZ. LENGTH		CAP
			INCHES	MM	
WH-JF-994	JF-994	28°	3 1/2	88.9	A-151

LARGE RADIUS, HIGH BEND AIR VALVE USED WITH 977S

All valves fit 13/16" valve hole.

Uses A-145 valve core and A-149 cap.

HALTEC NO.	BEND ANGLE	"L" LENGTH		"H" HEIGHT	
		INCHES	MM	INCHES	MM
1145-5 1/2	90°	5 1/2	139.7	2	50.8
1145-11	90°	11	279.4	2	50.8

LARGE RADIUS, HIGH BEND AIR LIQUID VALVE

Uses Super Large Bore T-81 spud (TR-SP-8).

Uses A-151 cap.

HALTEC NO.	BEND ANGLE	"L" LENGTH		"H" HEIGHT	
		INCHES	MM	INCHES	MM
977S-5 1/2	90°	5 1/2	139.7	2	50.8
977S-11	90°	11	279.4	2	50.8



TUBELESS TIRE REPAIR KIT

RK-800 - Off-Road Tubeless Tire Kit Consists of:

RK-810 - Tire insertion tool (1)

RK-820 - Tire material (1Box-50, 12" strips)

RK-830 - Tire repair compound (8 oz.)

RK-840 - Tire concentrated leak finder material (1)

RK-850 - Tire concentrated leak finder applicator (1)

Items can be ordered separately



SPECIAL HYDROFLATING VALVES

DESIGNED FOR FASTER FILLING OF TIRES WITH LIQUID. DOES NOT CONTAIN VALVE CORE. STRAIGHT-THROUGH 5/16" OPENING IS SEALED WITH SPECIAL O-RING CAP NO. A-151. USED ON LOADER TIRE IN CONJUNCTION WITH SIMILAR LARGE BORE AIR VALVE.

LARGE BORE VALVES

All Valves Complete With Core, Cap, Spud Nut and Grommet.

TURRET VALVE FOR PLANETARY GEAR WHEELS

HALTEC NO.	TR NO.	ANGLE BEND 1	OFF SET		HORIZONTAL LENGTH		ANGLE BEND 2
			INCHES	MM	INCHES	MM	
WH-330-J-690	J-690	28°	9/16	14.3	4 11/16	119.1	28°
*WH-330-J-691	J-691	18°	-	-	3 5/16	84.1	-
*WH-330-J-691B	J-691	18°	-	-	8 1/2	203.2	-
WH-330-J-692	J-692	28°	9/16	14.3	4 11/16	119.1	18°
WH-330-J-693	J-693	60°	1	25.4	5	127	60°
*WH-330-J-694	J-694	28°	-	-	3 1/2	88.9	-
WH-330-J-695	J-695	50°	1	25.4	4 1/8	104.8	50°
WH-330-J-696	J-696	42°	29/32	23	4 1/4	108	42°

*SINGLE BEND



WH-330-J-691

DOUBLE SPUD VALVES

DS-400-LENGTH

This Large Bore double spud valve eliminates most of the plugging of Large Bore valves, which occurs at the bend of the swivel-type Large Bore valve.



DS-400-L



WH-44-L

WH-44 LENGTHS RIGID EXTENSION FOR DOUBLE SPUD

Can be ordered in any length.

LOADER TIRE VALVE

T-670

Loader tire valve complete with core, hex cap and O-ring seal. Thread size is 1 1/16"-12.



T-670

LOADER TIRE VALVE

HALTEC NO.	HEIGHT		CAP
	INCHES	MM	
T-670	1 25/32	45.4	A-149

TANK VALVE

H-47

Screw-in type valve with 1/4" male pipe thread. Complete with core and cap.



H-47

TANK VALVE

HALTEC NO.	TR NO.	HEIGHT	
		INCHES	MM
H-47	J-671	1 19/32	40.5
H-47L		2.1	53.3

DS-385

For rims with valve hole counterbore on O.D. of rim.



DS-385

DS-390

For rims with 1/2" tapered pipe thread rim hole.



DS-390

H-43

Double Spud plug



H-43

TECH TIP

THE ULTIMATE FLOW RESTRICTION IN ANY INFLATION/DEFLATION SERVICE IS THE DIAMETER OF THE VALVE AND/OR VALVE CORE.

STRAIGHT VALVES

H-41

Tubeless spud, used with all Large Bore swivel valves. Fits 13/16" rim hole.



H-41

H-42

Straight valve, equipped with core and hex cap.



H-42



H-45

H-45

Spud and valve complete. Consists of H-41 & H-42.

STRAIGHT VALVES

HALTEC NO.	TR NO.	HEIGHT	
		INCHES	MM
H-41	SP-2	11/16	15.8
H-42	TRJ-670-2	1 1/2	38.1
H-45	TRJ-670-3	1 5/8	41.3

HAND-BENDABLE EXTENSIONS

HALTEC NO.	EFFECTIVE LENGTH	
	INCHES	MM
753S-3 1/2	3 1/2	89.6
753S-4	4	101.6
753S-4 1/2	4 1/2	114.3
753S-8	8	203.2
753S-9	9	228.6
753S-10	10	254
753S-11 1/2	11 1/2	292.1
753S-12	12	304.8
753S-13 1/2	13 1/2	342.9
753S-16	16	406.4
753S-17	17	431.8
753S-17 1/2	17 1/2	444.5
753S-18	18	457.2
753S-18 1/2	18 1/2	469.9
753S-19	19	482.6
753S-20 1/2	20 1/2	520.7
753S-21	21	533.4
753S-21 1/2	21 1/2	546.1
753S-22 1/2	22 1/2	571.5
753S-23	23	584.2
753S-23 1/2	23 1/2	596.9
753S-24 1/2	24 1/2	622.3
753S-25	25	635.3
753S-29 1/2	29 1/2	749.3
753S-32	32	812.8



S-8860

S-8860 VALVE SUPPORT

Used for Large Bore.

EXTENSIONS

HAND-BENDABLE

Equipped with 2 lock nuts and 3/4" hex sealing nut. A teflon gasket seals on end of valve, the lead seal in the sealing nut is forced into the threads for a second seal, positively locking extension to valve. Cap and core not included. They should be removed from valve and transferred to extension. Should be anchored to rim.

Other lengths can be ordered.



753S- LENGTH

LARGE BORE VALVES

RIGID BRASS EXTENSIONS

HALTEC NO.	EFFECTIVE LENGTH	
	INCHES	MM
867-1 1/4	1 1/4	31.8
867-1 1/2	1 1/2	38.1
867-2	2	50.8
867-2 1/2	2 1/2	63.5
867-3	3	76.2
867-3 3/8	3 3/8	85.7
867-4	4	101.6
867-4 1/2	4 1/2	114.3
867-5	5	127
867-5 9/16	5 9/16	141.3
867-6	6	152.5
867-6 7/8	6 7/8	174.6
867-7 1/4	7 1/4	184.2
867-7 3/4	7 3/4	196.8
867-8	8	203.2
867-8 1/2	8 1/2	216.2
867-9	9	228.6
867-10	10	254
867-10 3/4	10 3/4	273
867-12	12	304.8
867-12 1/2	12 1/2	317.5
867-16	16	406.4
867-18 7/8	18 7/8	479.4
867-22 1/2	22 1/2	571.5
867-24 1/2	24 1/2	622.3



RIGID BRASS EXTENSION

All-brass extension used where mounted in straight line with valve. Full-length deflector pin opens core in valve when servicing. Equipped with hex cap and 2 lock nuts on extensions over 5" in length. Replacement seal is available (part #F-454). Other lengths can be ordered.

FLEXIBLE EXTENSIONS

HALTEC NO.	EFFECTIVE LENGTH	
	INCHES	MM
810F-8	8	203.2
810F-9	9	228.6
810F-10	10	254
810F-11 1/2	11 1/2	292.1
810F-12	12	304.8
810F-13 1/2	13 1/2	342.9
810F-16	16	406.4
810F-17	17	431.8
810F-17 1/2	17 1/2	444.5
810F-18	18	457.2
810F-18 1/2	18 1/2	469.9
810F-19	19	482.6
810F-20 1/2	20 1/2	520.7
810F-21 1/2	21 1/2	546.1
810F-22 1/2	22 1/2	571.5
810F-23	23	584.2
810F-23 1/2	23 1/2	596.9
810F-24 1/2	24 1/2	622.3
810F-25	25	635
810F-29 1/2	29 1/2	749.3
810F-32	32	812.8
810F-40	40	1016



FLEXIBLE EXTENSION

Made with tough rubber hose and reusable hydraulic-type fittings. Equipped with 2 lock nuts and 3/4" hex sealing nut. A teflon gasket seals on end of valve. The lead seal in the sealing nut is forced into the threads for a second seal, positively locking extension to valve. Cap and core are not included. They should be removed from valve and transferred to extension. Other lengths can be ordered.

CUSTOM-BENT SWIVEL VALVES AND EXTENSIONS FOR CATERPILLAR (OE VALVES)

HALTEC NO.	OVERALL LENGTH (")	NUMBER OF BENDS	TYPE
WHG-0570VC	19 31/32	5	Valve
WHG-1450VC	32 7/8	5	Valve
WHG-4985VC	19 3/4	4	Valve
WHG-5200VC	27	5	Valve
WHG-5410VC	31 9/16	5	Valve
WHG-5420VC	33	5	Valve
WHG-8018VC	26 3/4	4	Valve
WHG-8019VC	8	1	Valve
WHG-9440VC	27	5	Valve
WHG-9470VC	31 1/2	5	Valve
WHG-5112VC	28 3/8	4	Valve
WHG-8852VC	18 9/16	4	Valve
WHD-5922EC	15 1/4	5	Extension
WHD-7940EC	19	5	Extension
WHD-7949EC	28 7/8	4	Extension
WHD-7948EC	20 5/8	4	Extension
WHD-0585EC	17 15/16	4	Extension
WHD-5008EC	17 13/16	4	Extension
WHD-7103EC	16 1/4	4	Extension
WHD-9903EC	16 7/8	4	Extension
WHD-7601EC	16 3/4	4	Extension
WHD-7602EC	14 1/4	4	Extension



H-4000 ADAPTER

H-4000 adapter converts tubes having SP-1000 type spud to accept Large Bore swivel valves. Equipped with BW-18 washer and used with rim slots.

H-4000-1 Adapter Same as H-4000 except without bridge washer and hex nut.



LARGE BORE SCREW-ON VALVES FOR INNER TUBES

HALTEC NO.	TR NO.	(A) ANGLE BEND	(B) VERT. HEIGHT		(C) HORIZ. LENGTH	
			INCHES	MM	INCHES	MM
LB-216*	J-1014	Strt.	1 29/32	48.4	-	-
LB-217*	J-1076A	Strt.	4 5/32	105.6	-	-
LB-218*	J-1076B	86°	1 1/8	28.6	3 1/4	82.6
LB-219*	J-1076C	90°	1 1/2	38.1	2 7/8	73
LB-220*	J-1076D	90°	2 1/16	52.4	2 5/16	58.7
LB-221*	J-1076E	88°	1 3/8	34.9	3	76.2
LB-223*	J-1175A	Strt.	5 9/32	134.1	-	-
LB-224*	J-1175B	82°	1 1/4	31.8	4 1/4	108
LB-225*	J-1175C	88°	1 3/8	34.9	4 1/8	104.8
LB-226*	J-1078A	Strt.	5 25/32	146.8	-	-
LB-227*	J-1078B	82°	1 3/8	34.9	4 5/8	117.5
LB-228*	J-1078C	90°	1 1/8	28.6	4 7/8	123.8
LB-229*	J-1179A	Strt.	6 13/32	162.7	-	-
LB-230*	J-1179B	88°	1 3/8	34.9	5 1/4	133.4
LB-231*	J-1179C	86°	1 3/8	28.6	5 1/2	139.7

These valves are supplied in straight or bent form ready for installation on tubes. Equipped with A-145 valve core and A-149 hex cap. Used with SP-1000 tube spud.

LARGE BORE VALVES

SUPER LARGE BORE VALVE SYSTEMS



The Super Large Bore Valve System was developed in 1972. There are four parts to the valve and a unique inflator is also needed to maximize the air flow.

- 1 There are four spud designs:
 - a. The standard clamp-in spud (T-81/T-82)
 - b. The temporary outside-in clamp-in spud (K-665)
 - c. The screw-in spud (C-100/C-155)
 - d. The angle screw-in spud (S-85)
- 2 The next component is the swivel angle connector which threads onto the spud. There are different angles and lengths to accommodate the requirements of the customer. (R-525 Series)
- 3 The next component is a flexible extension which can be made up in any length. (MT-3000 Series)
- 4 The core housing makes up the final component. It contains a Large Bore Valve Core for servicing the tire assembly for routine pressure checks and allows the complete core housing removal for the Super Large Bore application. It can also be installed in any of the previous components for a shorter valve. (R-520)
- 5 To maximize air flow, an IN-80A or an IN-95 inflator is used to remove the core housing during inflation and deflation.

A kit to allow extension assembly in the field is available. Rigid extensions are also available. *The Super Large Bore Valve System is FOUR times faster than a Large Bore Valve.*



COMPONENTS OF THE HALTEC SUPER LARGE BORE SYSTEM

M-1950 complete swivel valve, including R-520 core housing and T-81 spud.



1 CLAMP-IN SPUDS

K-665 OUTSIDE CLAMP-IN SUPER LARGE BORE

Can be changed without dismantling tire. Fits 13/16" rim hole. Use A-325 3/8" Allen wrench to hold spud while installing. Do not use in continuous service. Temporary use only.



K-665

T-81 CLAMP-IN SPUD

Fits the 13/16" diameter valve hole. The T-81 spud (TR-SP8) can attach any Super Large Bore valve to the rim through a standard valve hole (13/16" diameter). Tire must be dismantled to change spud.



T-81



T-82

T-82 CLAMP-IN SPUD

Similar to the T-81 spud but with an effective length 1/4" longer.

SCREW-IN SPUDS 1/2" NPT TAPPED HOLE



S-85

S-85 ANGLE SCREW-IN SPUD

S-85 angle screw-in spud. Fits 1/2" NPT-tapped rim hole. 85° bend angle. Other angles available.



S-85-D

S-85-D ANGLE SCREW-IN SPUD

Furnished with a locking nut with a teflon seal so direction can be reversed. 85° bend angle.

C-100/ C-155 SCREW-IN SPUD

The screw-in spud is used to attach any of the Super Large Bore valves to the rim and is designed to screw into a 1/2" NPT-tapped rim hole. The spud can be changed without dismantling the tire. C-100 has internal thread for core housing. C-155 has no internal thread.



C-100



A-450

A-450 BRASS CAP

Seals and protects the R-520 core housing.

SUPER LARGE BORE VALVES

2 SWIVEL ANGLE CONNECTOR

HALTEC NO.	BEND ANGLE
R-525	90°
R-685	85°
R-625	80°
R-675	75°
R-660	60°
R-529 5 1/4"	90°

Component two of the Super Large Bore System is generally a swivel connector that screws on the spud.

Connectors of various angles and lengths are available.

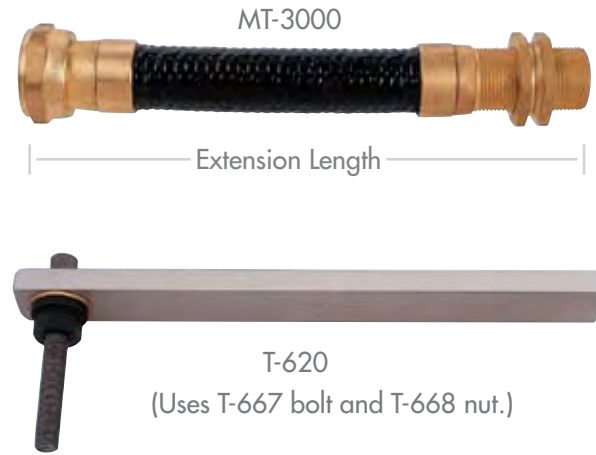
The other end of the connector accommodates a MT-3000 flexible extension which attaches to the R-520 core housing or the 6185 check valve



R-525

3 MT-3000 FLEXIBLE EXTENSIONS SERIES

Flexible extensions are made up in any length to allow the extension to fit the wheel configuration. The specially designed fittings and thermoplastic hose will not fatigue or crush during service. Corrosion problems are eliminated. Another important benefit of the Haltec Super Large Bore System is the ability to customize your extension in the field. The R-969-K and R-969K-1 kits are available to field assemble your own flexible extensions with the T-620 assembly tool.



MT-3000

Extension Length

T-620

(Uses T-667 bolt and T-668 nut.)



SLBHAT

SLBHAT

This tool is used to assemble super large bore flexible valves. The tool uses hydraulic power supplied by one of the air hydraulic pumps and does the work of pulling the mandrel through the hose fittings. It is fully portable and can be used anywhere an air hydraulic pump is available.

TECH TIP

The flow of the Large Bore valve is **THREE** times more air than the Standard Bore valve. The Super Large Bore valve is **FOUR** times more air than a Large Bore valve.

Measured in cost of down time and the cost to service large off-the-road tires, Super Large Bore is a bargain.

As the trend continues toward larger vehicles with larger tires, the need is for faster, more efficient tire servicing.

Super Large Bore fills that need. For even faster air flow, see the Mega Bore Valve System on page 25 or the Z-Bore on page 20.

Assembly Kit For Super Large Bore Valves Field Service
R-969K-1 consists of R-762S swivel connector, R-763 straight tubing connector, R-764R (2) tubing connector sleeves and B-222 nuts (2).
R-969-K consists of the above plus the R-520 core housing complete with core and cap.
R-760 Extension Tubing - available in 50' and 100' lengths.



R-763

R-760

R-520

R-764R

B-222

R-762S

4 CORE HOUSING OR CHECK VALVE



R-520



6185

R-520 (TR-CH-8) CORE HOUSING COMPLETE WITH CORE AND CAP

The R-520 is designated at Tire and Rim as the CH-8. It is an integral part of the system as the CH-8 is removed from the valve assembly with the Haltec IN-80A adapter to utilize the larger opening and the fullest flow.

6185 (TR-L-860) CHECK VALVE COMPLETE WITH CAP

The 6185 design permits rapid inflation and deflation. Eliminates need for core housing and inflation adapter. Used with 6190 air chuck.

6190 QUICK CONNECTION INFLATION CHUCK

Designed specifically for use with 6185 check valve. Sliding sleeve locks air chuck onto check valve and permits unrestricted air flow. Gauging can be done through valve on chuck. Positive air line shut off valve must be installed in back of air chuck.



HT-R760

HT-R760 HIGH TEMP SLEEVE

High temp hose is used to protect R-760 in applications where temperatures are high enough to damage the R-760. The HT-760 is cut to length and slid over the R-760, then held in place with hose clamps.

IN-80A SUPER LARGE BORE INFLATOR ADAPTER

The Haltec design of the Super Large Bore inflator adapter offers many advantages.

- 1/2" pipe thread for easy air hose connection. During inflation, air pressure in the tire can be checked through the stem knob with a tire pressure gauge.
- Reduces inflation time 60%, deflation time 80%.
- The core housing is held in a stainless steel extractor by a snap ring.
- Extrator is rugged enough so that the core housing can be loosened or tightened without being damaged. The IN-80A inflator adapter saves time by fast inflation or deflation on a tire. After removing the valve cap, the inflator is screwed onto the valve stem. The inflator stem is pushed in to engage the flats on the core housing. By rotating the stem counter clockwise, the core housing can be removed without any danger to the person removing it. The core housing is pulled up into the inflator body and held there during inflation or deflation. Can also be used for liquid-filling tires equipped with Super Large Bore valves.

IN-80A PARTS LIST:

- G-201 Ejector Union
- E-3100-4A Adapter Body
- G-206 Gasket for E-3100-1
- 8807N-4 Cap Adapter
- E-3100-1 Complete Stem and Collet
- G-202 Gasket for G-201
- G-204 Snap Ring for Collet
- A-145 Large Bore Valve Core
- 57 Standard Bore Cap

A-150



R-520B

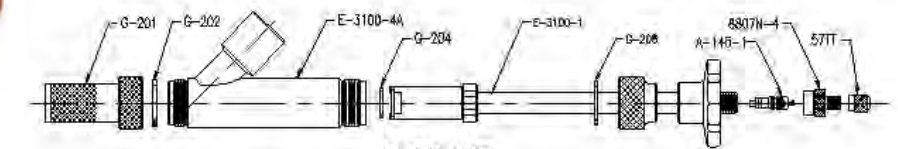
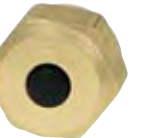
R-520-B CORE HOUSING COMPLETE WITH CORE AND CAP

The R-520B is designated at Tire and Rim as the CH-8. It is an integral part of the system as the CH-8 is removed from the valve assembly with the Haltec IN-80A adapter to utilize the larger opening and the fullest flow.

A-150 CAP

Valve cap used on PT-style valves. 5/8" hex.

A-150



PARTS LIST

G-201	EJECTOR UNION	G-206	GASKET FOR G-207
G-202	GASKET FOR G-201	A-145-1	LARGE BORE VALVE CORE
E-3100-4A	ADAPTER BODY	8807N-4	CAP ADAPTER
G-204	SNAP RING FOR COLLET	57	STANDARD BORE CAP
E-3100-1	COMPLETE STEM AND COLLET		



IN-80A

SUPER LARGE BORE VALVES

RIGID METAL SWIVEL VALVES



MR-800

MR-800 SWIVEL VALVE

MR-800 Length. Rigid metal swivel valve with R-520 core housing and (2) B-222 lock nuts. Can be ordered in different lengths.



MR-850

MR-850 SWIVEL VALVE

MR-850 Length. Same as MR-800 except with a T-81 rim spud.



MR-890

MR-890 TURRET VALVE

MR-890 Length. Rigid metal turret-type valve with R-520 core housing, B-222 lock nuts (3).



M-2000

M-2000 SWIVEL VALVE ASSEMBLY

A 90° swivel valve having 3 1/8" horizontal length.



CUSTOM VALVES

Custom valves can be formed with any bends and lengths to fit specific applications.

DOUBLE SPUD ASSEMBLY



DS-210



DS-226



DS-210P



DS-215



DS-296

DS-296 SUPER LARGE BORE DOUBLE SPUD VALVE ASSEMBLY (WITH FLEXIBLE EXTENSION)

Designed for wheels where space is critical. Valve height above rim is only 7/8". Consists of DS-210 double spud, DS-215 plug and MT-4000-length flexible extension.



MT-4000

MT-4000 LENGTH FLEXIBLE EXTENSION

Used with DS-296 and PB-210. Any length can be ordered. Consisting of: DS-226 connector, R-763 connector, R-764R sleeves (2), R-760 tubing.

N-1538B

7 7/8" long super large bore turret valve with 15° bend, used on Caterpillar applications.



N-1538B

N-1543A

6 1/8" long super large bore turret valve with 15° bend, used on Caterpillar applications.



N-1543A



N-1066

N-1066 SUPER LARGE BORE LOADER VALVE

Accepts R-520 core housing or other Super Large Bore swivel fittings. Thread size is 1 1/16"-12. Super Large Bore version of T-670.



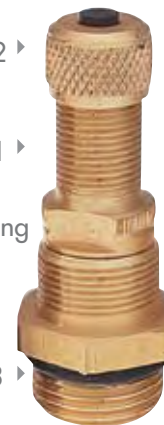
S-7910

S-7910 VALVE SUPPORT

Used for Super-Large Bore.

SUPER LARGE BORE AIR-LIQUID VALVE FOR TRACTOR & GRADER

- A-152 ▶ Cap
- R-521 ▶ Core Housing
- C-533 ▶ Spud



M-5000 VALVE ASSEMBLY

Screw-in type spud with O-ring seal. R-521 core housings not interchangeable in other Super Large Bore spuds. Thread size is 3/4" - 16.



H-50

H-50 (TR-F-910)

Straight Valve Assembly Components T-81 spud and R-372 core housing.

R-372 (CH-16)

Fits T-81, C-100 & TRSP 816 tube spud.



R-372

M-1870 VALVE ASSEMBLY

Super Large Bore straight valve assembly consists of R-520 core housing and T-81 spud.



M-1870

N-1050 VALVE ASSEMBLY

Same as M-1870 but with T-82 spud.



T-81 (SP-8)

Fits the 13/16" diameter rim hole.

T-81

SUPER LARGE BORE VALVES

Z-BORE VALVE SYSTEMS

The Z-Bore Valve System is very similar to the Super Large Bore System. By using an o-ring seal to clamp the spud to the rim, a greater flow diameter is created without sacrificing strength or performance.

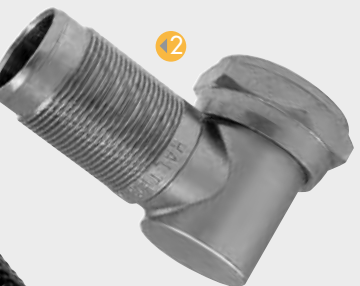
- 1 There are three basic spud designs:
 - a. The standard clamp-in spud (Z2)
 - b. The screw-in spud (Z1)
 - c. The angle screw-in spud (Z4)

There is no temporary outside-in clamp-in spud for Z-Bore.

- 2 The second component is the swivel angle connector which threads onto the spud. As with Super Large Bore Valves, you can install a core housing into the spuds to make a valve.
- 3 The Z-Bore Flexible Extension can be made up in various lengths.
- 4 The core housing is the final component. It contains a Large Bore Valve Core for servicing the tire assembly for routine pressure checks and allows the complete core housing removal for the Z-Bore application.
- 5 To maximize air flow, a Z-12 or IN-95 inflator is used to remove the core housing during inflation and deflation. This inflator operates like the Super Large Bore Inflator.

Like Super Large Bore Extensions, you can use a kit to allow extension assembly in the field. Rigid extensions will also be available.

Z-Bore flows 370 CFM compared to 240 CFM on the Super Large Bore Valve System.



1 RIM SPUDS

There are three spud types available: the standard clamp-in spud, a screw-in spud and an angle screw-in spud. There is no temporary outside-in clamp-in spud for Z-Bore.

The Z-Bore Valve System is very similar to the Super Large Bore System. By using an O-ring to seal the clamp-in spud to the rim, a greater flow diameter is created without sacrificing strength or performance.

Z-Bore flows 370 CFM compared to 240 CFM on the Super Large Bore Valve System.

2 ANGLE CONNECTORS

The second component is the swivel angle connector which threads onto the spud. As with Super Large Bore valves, you can install a core housing into the spuds to make a valve.

ANGLE CONNECTOR

Connectors of various angles and lengths are available. The connector accommodates a flexible extension which attaches to the Z-10 core housing.

ANGLE CONNECTORS

HALTEC NO.	ANGLE
Z3-75	75°
Z3-90	90°
Z3-80	80°



Z-2 CLAMP-IN SPUD

Fits the 13/16" diameter valve hole. The Z-2 spud can attach any Z-Bore valve to the rim through a standard valve hole (13/16"). Tire must be dismantled to change spud.



Z-1 SCREW-IN SPUD

The screw-in spud is used to attach any of the Z-BORE Valves to the rim and is designed to screw into a 1/2" NPT-tapped hole. The spud can be changed without demounting the tire.



Z-13 SCREW-IN SPUD

The Z-13 screw-in spud screws into the 3/4" NPT-tapped rim hole and converts Mega Bore to Z-Bore.

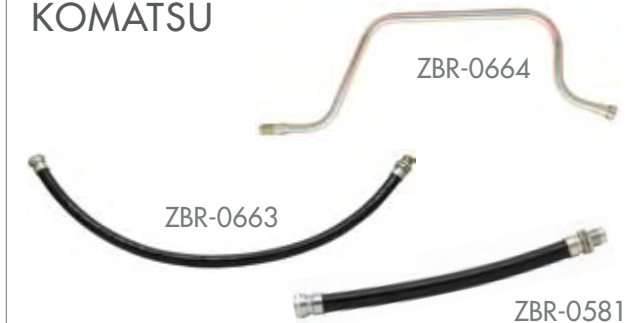


Z-4 ANGLE SCREW-IN SPUD

Fits 1/2" NPT-tapped rim hole. 85 degree bend angle.



KOMATSU



KOMATSU ANGLE CONNECTORS

KOMATSU NO.	HALTEC NO.
PC0664	ZBR-0664
PC0581	ZBR-0581
PC0663	ZBR-0663

Z-BORE VALVES



3 THE Z-BORE FLEXIBLE EXTENSION CAN BE MADE UP IN VARIOUS LENGTHS

Flexible extensions are made up in any length to allow the extension to fit the wheel configuration. The specially designed fittings and thermoplastic hose will not fatigue or crush during service. Corrosion problems are eliminated. Another important benefit of the Haltec Z-Bore System is the ability to customize your extension in the field. The ZFAK field assembly kit is available to field assemble your own flexible extension with the Z-5 assembly tool.

ZFAK - ASSEMBLY KIT FOR Z-BORE VALVES

ZFAK consists of Z-8 Swivel connector, Z-17, straight tubing connector, two Z2-2 nuts, two Z-9 tubing connector sleeves and Z10 core housing. Z-100 tubing is ordered separately.



The core housing is the final component. It contains a Large Bore valve core for servicing the tire assembly for routine pressure checks. The Z-12 inflator allows the complete removal of the core housing for the Z-Bore application.

4 Z10 CORE HOUSING

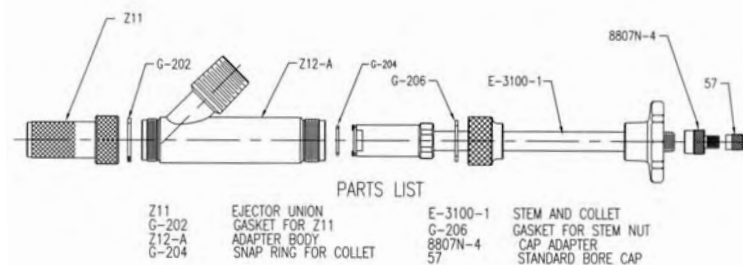
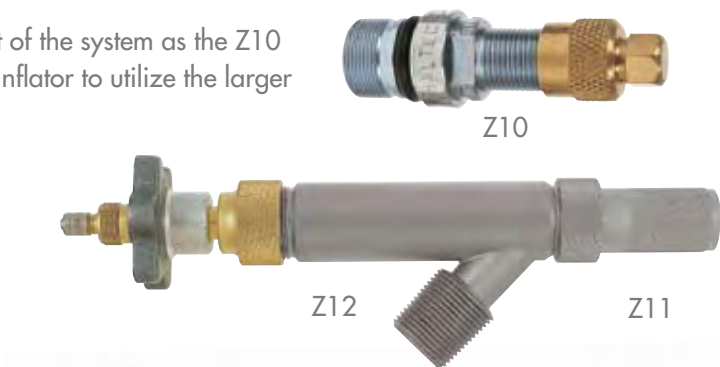
Complete with Core and Cap, the Z10 is an integral part of the system as the Z10 is removed from the valve assembly with the Haltec Z12 Inflator to utilize the larger opening and the fullest flow.

5 Z12 INFLATOR

To maximize air flow, a Z12 inflator is used to remove the core housing during inflation & deflation. This inflator operates like the IN-80A Super Large Bore inflator as seen on page 17.

Z12 PARTS LIST:

- Z11 Ejector Union
- G-202 Gasket for Z11
- Z12-A Adapter Body
- G-204 Snap Ring for Collet
- E-3100-1 Stem & Collet
- G-206 Gasket for Stem Nut
- A-145 Cap Adapter
- 57 Standard Bore Cap



HT-Z-100

HT-Z-100 HIGH TEMP SLEEVE

Used to protect Z-100 tubing.

PT GAUGE

The PT Valve System is a design that allows tire pressure to be monitored with an easy-to read, liquid filled, dial gauge attached to the valve. PT gauge is ordered separately. Comes with gauge and nut. Calibrated 0-160 psi.



PT GAUGE

The PT valve and gauge can be used on most Large Bore and Super Large Bore applications. Patent Pending

TECH TIP A specially designed tire valve allows for constant visual pressure checks. In order to use PT gauge you must use a special PT tire valve.

PTC BLOCK-OFF COLLAR

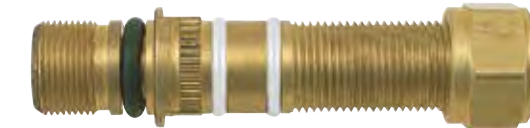
When the gauge is not being used, a PTC block-off collar can be installed to prevent air leakage. 5/8" hex.



PTC

PT-R-520

All PT valves have trouble-free, urethane O-rings on the valve barrel. For Super Large Bore applications, order the PT-R-520 core housing. Compatible for use with the IN-80A.



PT-R-520

PT-EX

Large Bore extension with 1 5/8" effective length to allow PT Gauge installation on existing valves.



PT-EX

PT-45-6

The PT valve hole allows the gauge to provide continuous pressure readings.



TL-634

TL-634

Tightens nut to hold PT gauge on valve assembly. Also tightens A-150 cap and PTC collar.

TECH TIP After fuel, tires are often a fleet's largest expense. The best way to insure maximum tire life is through proper tire inflation. Using a PT valve and gauge assembly, tire pressure monitoring has never been easier. Use the PT gauge for daily checks and a separate master gauge for weekly checks and you will catch air loss before it can cause permanent tire damage. By selecting the right PT valve for the application, a gauge can be installed on virtually any machine without the gauge assembly being vulnerable to damage. On some job sites air pressure almost never gets checked until it is visually noticed and by this time permanent tire damage has occurred. The PT valve and gauge assembly will raise the awareness level of machine operators, making it easier for them to recognize a low tire before damage has been done.

PT VALVE SYSTEMS

PT VALVE SYSTEM

HALTEC NO.	DESCRIPTION	CAP
PT Gauge	Gauge with nut for use on PT valves, 0-160 psi	-
PTC	Block-off collar for PT valves when gauge is not attached	-
PT-300-J-650	WH-300-J-650 with PT grooves and O-rings	A-150
PT-45-6	WH-45-6 with PT grooves and O-rings	A-150
PT-330-J-690	WH-330-J-690 with PT grooves and O-rings	A-150
PT-H-42	H-42 with PT grooves and O-rings	A-150
PT-753S-6	753S-6 with PT grooves and O-rings	A-150
PT-R-520	R-520 with PT grooves and O-rings for Super Large Bore	A-150
PT-330-3 1/2	Turret-style valve with 3 1/2" effective length	A-150

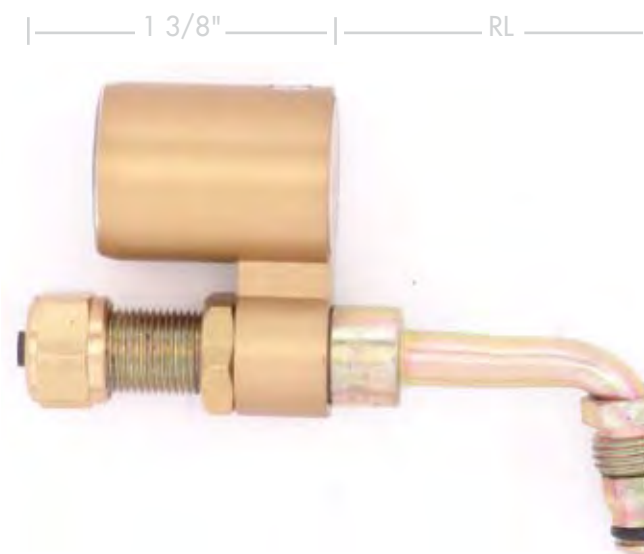
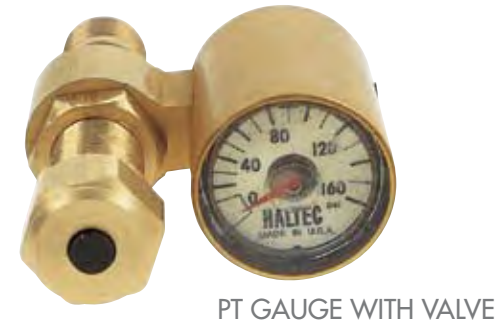
- Other Valves and Sizes Available
- To order other valves add the prefix "PT" to the Haltec valve number
- Assemble the valve to the tire and wheel assembly before installing the PT gauge to the PT valve.



This gauge mounts on specially designed PT-style valves which allow visual tire pressure checks yet also allows for inflation, deflation and manual pressure checks without removing the gauge.

The PT gauge has an all-anodized aluminum body and is totally sealed to prevent moisture from fogging the glow-in-the-dark dial.

The PT Gauge is liquid filled to prevent damage from vibration.

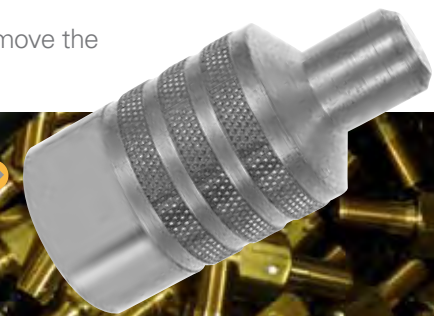


When ordering valves for steering rim assemblies, check the rear length measurement (RL) so the device will clear the valve lug. This is important on some front truck rims and rear forklift or container mover tires.

MEGA BORE VALVE SYSTEMS

The Mega Bore Valve System is unique because it uses a different hole size than other valve systems. There are several other features which make this system unique.

- 1 There are three types of rim spuds:
 - a. The clamp-in spud for the 15/16" rim hole.
 - b. The angled screw-in spud for the 3/4" NPT rim hole.
 - c. Screw-in spud for the 3/4" NPT rim hole.
 - 2 As with the Z-Bore System, there is no temporary clamp-in spud. The second component is an angle connector which screws onto the clamp-in on the screw-in spud. The rigid Mega Bore Valve can be screwed into the angle adapters and angle screw-in spuds.
 - 3 The next component is either the rigid Mega Bore Valve or the Mega Bore Flexible Valve which has the rigid Retractable Core Housing permanently assembled to the extension. The original Mega Bore Valves have a retractable, but not removable, core housing.
 - 4 There is also a unique cap to the Mega Bore System to protect the side vent air holes and threads of the valve.
 - 5 To maximize air flow, an MB-8 inflator is used to retract the core housing during inflation and deflation. For routine pressure checks you can still use any Large Bore pressure gauge or air chuck.
- Like the Super Large Bore and the Z-Bore Valve Systems, the Mega Bore Flexible Extensions can be field assembled. Mega Bore flows 550 CFM compared to 240 CFM on the Super Large Bore System.
- 6 Maximize air flow with the IN-95 inflator, used to remove the core housing during inflation and deflation.





MB-20

MB-20 CLAMP-IN SPUD

Fits a 15/16" diameter valve hole. Tire must be dismantled to change spud. Attach any Mega Bore angle connector to the MB-20 spud.



MB-26

MB-26 SCREW-IN SPUD

Fits a 3/4" NPT threaded valve hole, screw-in spud. Attach any Mega Bore angle connector to the MB-26 spud. Spud can be changed without demounting tire.



MB12-85

MB-12-85 & MB-12-75 SCREW-IN ANGLE SPUD

The screw-in spud is used on a 3/4" tapped rim hole. Attaches to a MB-14 rigid or a FMB flexible Mega Bore valve. The spud can be changed without dismantling the tire.



MB19-85

MB-19-85 & MB-19-75 ANGLE CONNECTORS

An angle connector screws onto the MB-20 spud. The other end of the connector accommodates a MB-14 rigid valve or a FMB flexible Mega Bore valve.



MB29-85

MB-29-85 ANGLE CONNECTORS

An angle connector screws onto the MB-20 spud. The other end of the connector accommodates a MB-27 rigid valve or Caterpillar O-ring face seal hydraulic hose.



MB-8

MB-8 INFLATOR

The MB-8 Mega Bore inflator attaches to the valve body by turning the knurled nut on the inflator in a clockwise direction. The 3/4" ball valve is used to open and close the air flow after the core housing is retracted with the TL-700.



MB-14

MB-14 RIGID MEGA BORE VALVE

Rigid Mega Bore valve can be screwed into any Mega Bore angle connector or screw-in spud.



MB-27

MB-27 FACE SEAL MEGA BORE VALVE

Bore Valve Rigid Mega Bore valve can be screwed onto MB-29 angle connector or Caterpillar O-ring face seal hydraulic fittings.



MB-25

HEX

MB-25 HEX CAP

Cap for the Mega Bore core housing. Protects core housing from damage. Has an O-ring seal. Has modified Hex that can be installed or removed using the TL-700.



MB-13

MB-13 VALVE CAP

Cap for the Mega Bore core housing. Protects core housing from damage. Has an O-ring seal.



FMB

FMB LENGTH MEGA BORE FLEXIBLE VALVE

Screws into the Mega Bore angle connectors or screw-in angle spud. Can be made up in any length (minimum 8"). The specially designed fittings and thermoplastic hose will not crush or fatigue during service. Large Bore threads on the core housing allow use of Large Bore pressure gauges.



HT-R-761

HT-R-761 HIGH TEMP SLEEVE

Used to protect R-761 tubing.



MBV-L

MBV-L

Screws into the Mega Bore angle connectors or screw-in angle spud. Made to length in the field using the MBAT assembly tool. MB-14 screws into the end to complete the valve.



TL-700

TL-700 TOOL

The TL-700 fits the Mega Bore core housing to retract the housing for inflation and deflation. The TL-700 should be used only in conjunction with the MB-8 Mega Bore inflator. The MB-8 inflator should be engaged on the core housing before using the TL-700.

COMPONENTS FOR MEGA BORE FLEXIBLE VALVE FIELD ASSEMBLY



MB-50



MB-51



MB-52



MB-23



MB-5A



MBAT Assembly Tool



MB-3

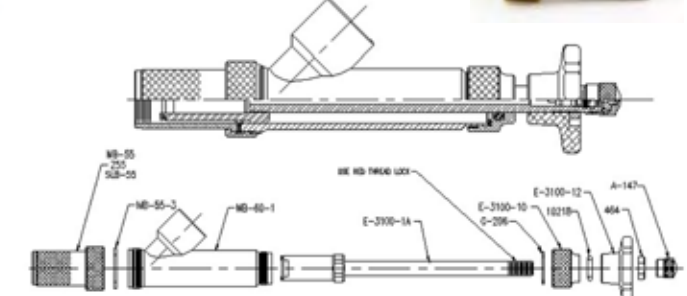


R-761

IN-95 INFLATOR ADAPTER

Haltec Model IN-95 Inflator Adapter for Air or Liquid Filling of Large Earthmover Tires when Equipped with Super Large Bore, Z-Bore, and Mega Bore Valves.

The IN-95 will insert or extract a R-372, R-520, Z10, or a MB-50 core housing and positively hold it up in the adapter body out of the air or liquid flow when filling or evacuating a tire. The inflator adapter can be attached to any liquid filling tire pump since it has 3/4" pipe thread. With the adapter attached to the valve, the pressure in the tire can be checked without disconnecting it from the valve, with a large bore gauge, through the end of the adapter stem. All IN-95 parts are brass except the collet, which is stainless steel and the hand knob, which is aluminum.



MEGA BORE VALVES

STANDARD AND ARCTIC O-RINGS FOR TUBELESS RIMS

HALTEC NO.	TIRE TYPE	RIM SIZE	ROD DIAMETER
OR-21-T	Highway	21"	.26
OR-25-T	Earthmover	25"	
OR-20-JM	Highway (JM Rim)	20"	
OR-22-JM	Highway (JM Rim)	22"	
OR-24-JM	Highway (JM Rim)	24"	.28
OR-215-H	Grader	15"	
OR-217-L	Grader	17"	
OR-220-TG	Grader	20"	
OR-224-TG	Grader	24"	.26
OR-225-T	Grader	25"	
OR-321-T	Earthmover	21"	
OR-325-T	Earthmover	25"	
OR-329-T	Earthmover	29"	.375
OR-333-T	Earthmover	33"	
OR-335-T	Earthmover	35"	
OR-339-T	Earthmover	39"	
OR-343-T	Earthmover	43"	.50
OR-345-T	Earthmover	45"	
OR-349-T	Earthmover	49"	
OR-449-T	Earthmover	49"	
OR-451-T	Earthmover	51"	.50
OR-451-OVM	Earthmover	51"	
OR-457-T	Earthmover	57"	
OR-457-OVM	Titan OVM	57"	
OR-463-T	Earthmover	63"	.50
OR-463-OVM	Earthmover	63"	
OR-469-T	Earthmover	69"	

TECH TIP

Haltec O-Rings pass all OE specs

STANDARD AND ARCTIC O-RINGS FOR TUBELESS RIMS

HALTEC O-RINGS

- Packaged 2 per poly bag
- 24 O-rings per case
- Sold in case lots
- Consistent product quality
- Manufactured of high-quality material
- O-rings individually marked in an easy-to-read color
- Manufactured to major OEM specifications
- Spliced O-ring with sonic weld technology
- Extruded product allows diameter variation to meet the wide variety of rim O-ring grooves, both domestic and foreign
- Two compounds for all service conditions: Standard -40° to 180°F Arctic -65° to 180°F
- Customized product available for special applications. For Arctic o-rings add the letter "A" to the end of the part number.

IMPORTANT INFORMATION

- L-Ring Seals are not a cure for damaged beads nor damaged wheels and rims. Caution should be used during all fitments. Do not install where broken bead is suspected.
- Always follow the respective manufacturers' recommendation for proper bead-lubrication and initial air pressure to properly seat beads.
- If you have any questions regarding the use of the L-Ring Seals, contact Haltec prior to attempting any installation.

L-RING SEALS FOR EARTHMOVER RIMS

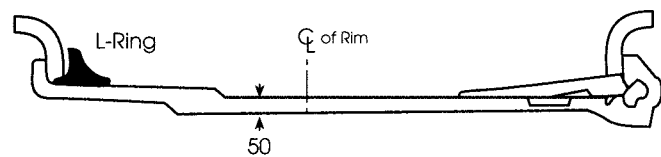
HALTEC NO.	DESCRIPTION
LR-25	25" L-ring seal
LR-29	29" L-ring seal
LR-33	33" L-ring seal
LR-35	35" L-ring seal
LR-39	39" L-ring seal
LR-45	45" L-ring seal
LR-49	49" L-ring seal
LR-51	51" L-ring seal
LR-57	57" L-ring seal
LR-63	63" L-ring seal
LR-69	69" L-ring seal

L-RING SEALS FOR EARTHMOVER RIMS

PROPER USE OF HALTEC L-RING SEALS

The primary purpose of the L-ring seal is to create an air seal where the tire bead and rim bead seat are not completely compatible. Some of the examples where the L-seal will prove useful:

- Where you have an irregular butt weld in the knurled bead seat area.
- Where, during initial inflation, the bead seating is very difficult.
- When an air passage between the bead and the rim is identified.
- Where overloads and severe operating conditions cause the rim deformation (deflection) which can result in air leakage.



O RINGS & L RINGS

EINKY VALVES

HALTEC NO.	BEND ANGLE	EFFECTIVE LENGTH	VALVE HOLE
TV-6010	STR.	3/4"	.453
TV-6020	45°	-	.453
TV-6030	STR.	1 1/4"	.453
TV-6040	STR.	1 3/4"	.453
TV-6050	90°	2 5/8"	.453



A high-performance "No Show" type chrome plated valve that installs from the outside. A rubber washer and nut are on the inside.

CLAMP-IN VALVE

Used on car and light truck applications. Maximum inflation pressure 130 psi.

CLAMP-IN VALVE

HALTEC NO.	TR NO.	EFFECTIVE LENGTH	VALVE HOLE
TV-416	416	1 1/4"	.453 or .625
TV-416L	-	2"	both grommets furnished



DOUBLE BEND VALVES

For tubeless truck and bus tires. Extra-low vertical height clamp-in type. Fits .625" valve hole.

DOUBLE BEND VALVES

HALTEC NO.	TR NO.	EFFECTIVE LENGTH
TV-513	513	2 5/8"
TV-515	515	3 1/4"



SNAP-IN TIRE VALVE & CHROME SLEEVE TIRE VALVES

HALTEC NO.	TR NO.	EFFECTIVE LENGTH	VALVE HOLE
TV-412	412	7/8"	.453
TV-413	413	1 1/4"	.453
TV-414	414	1 1/2"	.453
TV-415	415	1 1/4"	.625
TV-418	418	2"	.453
TV-423	423	2 1/2"	.453
TV-425	425	2"	.625
TV-413-CH	Chrome	1 1/4"	.453
TV-418-CH	Chrome	2"	.453

Maximum cold inflation pressure 65 psi.

H-501OV VALVE FOR 16 X 6 KS WHEEL WITH OVAL VALVE HOLE

Circumferential rim slot for valve for 16 x 6KS and 16 x 6 1/2LS rim contours.

Design allows a positive seal in this special valve hole. We recommend checking the valve hole for metal burrs prior to installation. Grommet is not replaceable.



RADIAL COMMANDER

Valve N-1147 for 15" Disc Wheels 23° bend clamp-down valve for .625 valve hole. Bend allows clearance of brake drum for tire service.



HIGH-PRESSURE TUBELESS TIRE VALVE

HALTEC NO.	TR NO.	EFFECTIVE LENGTH	VALVE HOLE
TV-600-HP	600HP	1 1/4"	.453
TV-602-HP	602HP	2"	.453
TV-801-HP	801HP	1 1/4"	.625
TV-802-HP	802HP	2"	.625



HIGH-PRESSURE TUBELESS TIRE VALVE

TV-600-HP and TV-602-HP used to 80 psi cold inflation pressure, and fits .453" diameter valve hole, maximum rim thickness .205" at valve hole. TV-801-HP and TV-802-HP used to 100 psi cold inflation pressure, and fits .625" diameter valve hole, maximum thickness .205" at valve hole. Designed for use with transporting mobile homes.



TECH TIP

All Haltec snap-in valves pass all SAE requirements

STANDARD BORE VALVES

TECH TIP All grommets on 570 series valves are US made

TRUCK AND BUS VALVES

HALTEC NO.	TR NUMBER	EFFECTIVE LENGTH
TV-500	500	2"
TV-501	501	1 1/2"
TV-570	570	3 1/8"
TV-571	571	3 3/8"
TV-572	572	3 3/4"
TV-573	573	4 3/8"
TV-574	574	5"
TV-575	575	1 1/8"



TRUCK AND BUS VALVES

Straight clamp-in valves used on both demountable and non-demountable rims. For .625" diameter valve hole. Bent valve stems also available.



METRIC RIM HOLE VALVE (9.7MM VALVE HOLE)

HALTEC NO.	ETRTO	BEND	A HEIGHT	B HEIGHT
60 MS-27	No ETRTO	27°	1 3/16"	1 3/16"
70 MS-27	V3-20-5	27°	1 3/16"	1 9/16"
80 MS-27	V3-20-7	27°	1 3/16"	2"
90 MS-27	V3-20-4	27°	1 3/16"	2 3/8"
115 MS-27	V3-20-6	27°	1 3/16"	3 3/8"
41 MS-00	V3-20-1	STR	1 3/16"	-

Other sizes available upon request

METRIC RIM HOLE VALVE (9.7MM VALVE HOLE)

Some imported trucks will have steel wheels that incorporate the 9.7mm valve hole (.390"). These are the most popular valves for this application.

SURE VALVE™

Patented break-away tire valve has valve core inside the wheel and double-seal design that secures the air in tires if the valve stem is severed.



SureValve™ has been approved for NASCAR competition.



TV-430 TUBELESS MOTORCYCLE VALVE

Has O-ring seal, fits .327" valve holes. Effective length is 1 3/16".



TV-575-HP

Low profile with 1" E.L. Has grommets to fit either .453 or .625 diameter valve hole.



TV-6008C

Tractor Front Wheel Valve Low profile valve offers minimum protrusion above the rim. 9/16" effective length with chrome finish. Fits .453 or .625 valve hole.



H-523MS ALLOY VALVE

A light alloy valve used on racing and light alloy wheels. Fits .453 valve hole and has O-ring seal.



TRUCK VALVES FOR ALUMINUM TRUCK WHEELS

Tubeless valves used in drop-center aluminum disc wheels with .625 valve hole. Rubber Grommet available (part # G-172).

TRUCK VALVES FOR ALUMINUM TRUCK WHEELS

HALTEC NO.	TR NO.	BEND ANGLE	E.L.
TV-509	TR-509	90°	4 3/4"
TV-510	TR-510	90°	5 1/2"
TV-511	TR-511	90°	4 1/4"



TV-417 CLAMP-IN VALVE (TR417)

This valve is designed for front-wheel drive Tornado ('66-'78) and El Dorado ('67-'78) cars. 453 valve hole.

TECH TIP Keep all o-ring surfaces as clean as possible while assembling valves

TV-540 SERIES, O-RING SEAL VALVES FOR ALUMINUM TRUCK WHEELS (9.7MM VALVE HOLE)

HALTEC NO.	VALVE TR NO.	A HEIGHT	BEND ANGLE	B LENGTH	HEX NUT
TV-542	542	1.25	-	-	HN-22
TV-543	543	2.4	-	-	HN-22
H-543C	543C	0.93	45°	1.43	HN-22
TV-543D	543D	0.98	60°	1.38	HN-22
TV-543E	543E	0.98	75°	1.38	HN-22
TV-544	544	2.9	-	-	HN-22
TV-544C	544C	0.98	45°	1.94	HN-22
TV-544D	544D	0.98	60°	1.94	HN-22
TV-545	545	3.5	-	-	HN-22
TV-545D	545D	0.98	60°	2.6	HN-22
TV-545E	545E	0.98	75°	2.6	HN-22
TV-546	546	4.25	-	-	HN-22
TV-546D	546D	0.98	60°	3.35	HN-22
TV-546E	546E	0.98	75°	3.35	HN-22
TV-547D	547D	0.98	60°	3.78	HN-22
TV-546-36	546-36	0.98	36°	3.35	HN-22



TV-575HP/DS-1



N-1600



TV-416LF



TV-416/DS-1



TV-416MC

TV-575HP/DS-1

- Ford "Cut-Away" and Cargo Van Series with Single Rear Wheels
- Accuride Steel 16" x 7" Wheels
- Front & Rear Wheels
- Chrome Finish

N-1600

- Ford "F" Series Trucks with Dual Wheels
- Alcoa Aluminum 16"
- Front & Rear Wheels
- Chrome Finish

TV-416LF

- Ford "Cut-Away" Series with Dual Wheels
- Accuride Steel 16' x 16" Wheels
- Front & Rear Wheels
- Nickle Finish

TV-416/DS-1

- Ford "F" Series Trucks with Dual Wheels
- Accuride Steel 19.5"
- Front & Rear Wheels
- Nickle Finish

TV-416MC

- Ford "F" Series Trucks with Dual Wheels
- Accuride Steel 16" x 16"
- Front & Rear Wheels
- Nickle Finish



70 MS-7

- Aluminum wheel valve with grommet seal.
- Fits 9.7 mm



TV-550 SERIES

Features:

- Longer sealing life
- Greater corrosion resistance
- Larger sealing surface
- Hex recess in base for easier installation
- Viton™ replacement grommet - G-550
- Grommet has better temperature range and tear resistance
- Grommet must be used on TV-550 Series only, not for use on 540 valve series

GROMMET SEAL VALVES FOR ALCOA TRUCK WHEELS (9.7MM VALVE HOLE)

HALTEC NO.	VALVE TR NO.	A HEIGHT	BEND ANGLE	B LENGTH	HEX NUT
TV-552	552	1.26	-	-	HN-22
TV-553	553	2.4	-	-	HN-22
TV-553C	553C	.93	45°	1.43	HN-22
TV-553E	553E	.98	75°	1.38	HN-22
TV-554D	554D	.98	60°	1.94	HN-22
TV-555D	555D	.98	60°	2.6	HN-22
TV-555E	555E	.98	75°	2.6	HN-22

TECH TIP The slot on the bottom of the 550 series allows for easy installation

STANDARD BORE VALVES



HE-370 HE-371

TRUCK VALVE EXTENSIONS HE-370 SERIES LIGHT-WEIGHT EXTENSIONS

Series has the short collar for use on tube-type or tubeless valves. Available in 2"-3"-4" and 5" effective lengths. Has a double seal feature to assure a positive seal. .305-32 cap thread



HE-392

HE-390 SERIES LIGHT-WEIGHT EXTENSIONS

Light-weight extensions are the same as above except with a long collar.



HE-383

HE-380 SERIES STRAIGHT METAL EXTENSIONS

These screw on the standard valve stem (.305-32 cap thread) and make the valve mouth accessible for service. .305-32 cap thread

TRUCK VALVE EXTENSIONS

HALTEC NO.	DESCRIPTION	COLLAR TYPE	EFFECTIVE LENGTH
HE-369	Truck Extension	Short 3/8"	1 3/8"
HE-370	Truck Extension	Short 3/8"	2"
HE-371	Truck Extension	Short 3/8"	2 15/16"
HE-372	Truck Extension	Short 3/8"	3 15/16"
HE-373	Truck Extension	Short 3/8"	5 1/8"
HE-389	Truck Extension	Long 1"	1 1/16"
HE-390	Truck Extension	Long 1"	2"
HE-391	Truck Extension	Long 1"	2 15/16"
HE4430	Truck Extension	Long 1"	4"
HE-392	Truck Extension	Long 1"	5 1/8"
HE-393	Truck Extension	Long 1"	6"
HE-394	Truck Extension	Long 1"	8.0"
HE-395	Truck Extension	Long 1"	10.0"
HE-396	Truck Extension	Long 1"	12.0"
HE-397	Truck Extension	Long 1"	14.0"
Standard Style	-	-	-
HE-381	Truck Extension	Long 1"	3 1/16"
HE-382	Truck Extension	Long 1"	5 1/16"
HE-383	Truck Extension	Long 1"	6 1/16"

STABILIZER & EXTENSION KIT

ALCOA STABILIZER & EXTENSION KIT

Proper air pressure is the most important factor in lengthening tire life. On dual wheel assemblies, the inner dual is many times overlooked or improperly serviced. The Alcoa Extension and Stabilizer Kit allows access to the inner dual tire valve and properly positions and supports the extension for servicing. The stabilizer reduces the road vibration on the extension and practically eliminates valve stem breakage caused by vibration.

Available in 12 sizes. Each stabilizer kit contains 2 stabilizers and 2 extensions.



245392

ALCOA STABILIZER

HALTEC NO.	FITS ALCOA WHEEL SIZE	DIAMETER HAND HOLE	HOLE POSITION
H-2125	19.5"	1.50"	Center
H-2126	19.5"	1.50"	Off-Center
H-2127	22.5 x 9.0	1.50"	Center
H-2225	22.5"	2.00"	Center
H-2245	24.5"	2.19"	Off-Center
H-2246	Peterbilt	Oval	Center
H-2227	22.5"	2.50"	Center
H-2247	24.5"	2.375"	Off-Center
H-2257	Freightliner 19.5"	Custom	Center
H-8864	22.5" & 24.5	2.50"	Off-Center
H-8964	Prevost	2.00"	Off-Center
H-2248	Freightliner	1.3125"	Center

STABILIZER & EXTENSION KIT

HALTEC NO.	STABILIZER (2)	EXTENSIONS (2)
125392	H-2125	HE-392
126392	H-2126	HE-392
127392	H-2127	HE-393
225392	H-2225	HE-392
227392	H-2227	HE-392
245392	H-2245	HE-392
246392	H-2246	HE-392
247392	H-2247	HE-392
257392	H-2257	HE-392

TECH TIP Haltec's DS-1 Flow Through Caps will increase the speed with which your fleet drivers and maintenance technicians complete their tire maintenance. Allows inflation and deflation through cap.



HE-353-D



HE-353

PLASTIC VALVE EXTENSIONS

HALTEC NO.	EFFECTIVE LENGTH	CAP
HE-350	2.04"	A-100-VC-3
HE-350D	2.63"	DS-1
HE-351	3.82"	A-100-VC-3
HE-351D	4.41"	DS-1
HE-352	5.21"	A-100-VC-3
HE-352D	5.80"	DS-1
HE-353	5.94"	A-100-VC-3
HE-353D	6.53"	DS-1

PLASTIC VALVE EXTENSIONS HE-350 BLACK POLYMER EXTENSIONS

These light-weight truck extensions are made of a durable, tough plastic able to withstand the conditions tire valve extensions are exposed to, yet they are extremely lightweight. Designed for use where vibration and weight is a concern for valve stem breakage.



HE-200

HE-201

BENT EXTENSIONS FOR STANDARD BORE VALVES

HALTEC NO.	BEND	EFFECTIVE LENGTH	VERTICAL LENGTH
HE-200	90°	1 3/8"	3/4"
HE-201	45°	1 3/8"	3/4"
HE-202	135°	1 3/8"	15/16"
HE-203	24°	5 7/16"	N/A



621-5 clamp available

SFE-400 LENGTH

Similar to the FE-300 series except has steel braid over rubber hose.

SCREW-ON REPAIR VALVES

HALTEC NO.	TR NO.	EFFECTIVE LENGTH
RV-1177A	1177A	3 1/4"
RV-1077A	1077A	4 1/8"
RV-1175A	1175A	4 1/2"
RV-1078A	1078A	5"
RV-1179A	1179A	5 5/8"



RV-1078A

SCREW-ON REPAIR VALVES

For trucks and bus, tube-type tires. A quick replacement for broken tube valves with body thread. Cut off valve and screw on repair valve without cutting out old valve base. (with bridge washer). Can be used with SP-1000 tube spud.

DOUBLE SEAL CAP DS-1

- A time, money and labor saving alternative to common valve caps.
- Reduce pressure check time by 65%
- Designed for high pressure truck tire service. Inflate, deflate or gauge directly thru the DS-1 saving time during inflation and pressure checks. Automatic inflation systems lock right onto the DS-1. Seals like a high pressure cap, yet offers the convenience of an inflate thru extension. The DS-1 performs like a check valve – the seal becomes tighter in the event of a core failure. Heat resistant grommets provide additional protection for extended high temperature running. Features tough all metal housing, precision fit brass components and durable self-sealing O-Ring.



DS-1



10171 Clamp

DUAL WHEEL FLEXIBLE VALVE EXTENSIONS FE-300 LENGTH

This extension provides easy access to the inner dual tire found on campers, recreational vehicles and light trucks. Fits standard valve cap threads. Comes with clamp to secure extension to wheel cut-out. 2 extensions per pack. Standard effective lengths are 7" and 9". Effective to 200 p.s.i. Also available, clamp part number FE-300CL, which clamps directly to the lug nut. Other lengths available upon request.

VALVE EXTENSIONS

HIGH-PRESSURE SHOCK STRUT VALVES

Constructed of stainless steel bodies for use in high-pressure shock absorber units, hydraulic pressure accumulators, surge cylinders and high-pressure pneumatic systems. Valves have 1/2" - 20 U.N.F. - 3A threads for connection to container.

H-7607 SHOCK STRUT VALVE

For operating pressure to 2,000 psi. Conforms to AN-812-1.



H-7607

H-4361 SHOCK STRUT VALVE

For operating pressure to 3,000 psi. Conforms to AN-6287-1.



H-4361

H-798 SHOCK STRUT VALVE

For use on shock struts where operating pressure is rated for 5,000 psi. Conforms to MS-28889-2



H-798



H-6116

Same as H-6116B except has straight extension.



H-6116B

Fits .305-32" thread size with 1/8" NPT female connection with 70° bend. Equipped with hard fiber sealing washer. Used up to 3000 psi working pressure.



5007

Fits .305-32" thread size with 7/16"-20 thread for 1/4" flare tube fitting. Meets MS 33656E4. Maximum pressure rating is 15,000 psi. Recommended torque 75 in/lb for steel valves. Has copper sealing washer.



2755-L



H-2755

H-2755

HIGH-PRESSURE INFLATING CONNECTION

Fits .305-32" thread size with 3/8"-24 thread for 3/16" flare tube fitting, meets MS336556E3. Has core depressor pin and copper sealing washer. Maximum working pressure 3000 psi.

2755L

LARGE BORE HIGH-PRESSURE INFLATING CONNECTION.

Fits .482"-26 thread size with 3/8"-24 thread for 3/16" flare fitting. Has core depressor pin and copper sealing washer. Maximum working pressure 3000 psi.

H-556 HIGH-PRESSURE INFLATING CONNECTION

Fits .305-32" thread size with 1/8" NPT male connection. Has core depressor pin, and copper sealing washer. Maximum working pressure 3000 psi.



TANK VALVES

HALTEC NO.	OAL	BASE THREAD	CAP THREAD	HEX SIZE
TV-399	1 5/16"	1/8" NPT	.305-32	7/16"
TV-400	1 5/16"	1/4" NPT	.305-32	9/16"
TV-401	27/32"	1/8" NPT	.305-32	7/16"
TV-402	1 5/16"	1/8" NPT	.305-32	7/16"
H-47	1 19/32"	1/4" NPT	.482-26	9/16"
TV-400S	1"	1/4" NPT	.305-32	9/16"

TANK VALVES

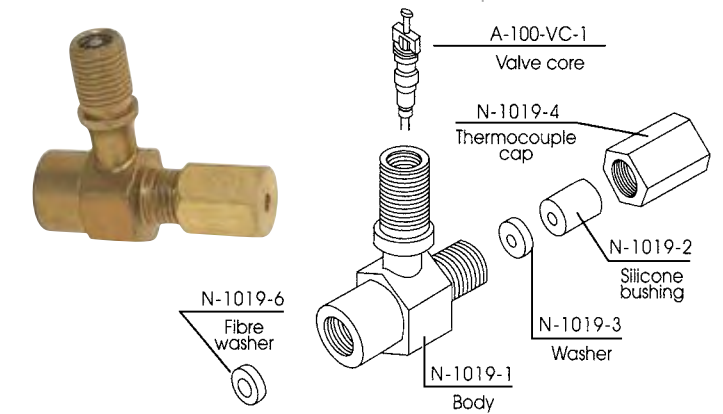
Utilized on pressure containers where gauging or servicing may be required. Tank valves are used with various gases, fluids and operating pressures. For specific application, please contact Haltec for technical assistance.



THERMOCOUPLE CONNECTION FOR TIRE TESTING

N-1019

Allows the testing facility to monitor internal temperature of the tire.



RADIAL TIRE BEAD SEATERS

One-piece rubber tube for mounting hard-to-seat radial, bias belted or conventional truck tires. As tire is inflated, the lubricated bead seater forms a seal between the rim and tire allowing the air pressure to force the beads into the rim flange. As proper pressure is reached, the bead seater slides out and over the rim.

FOR TRUCK TIRES:

- TC-50 for 16.5" and 17.5" Rims
- TC-60 for 19.5" Rims
- TC-70 for 22.5" and 24.5" Rims

FOR PASSENGER TIRES:

- PC-1 for 13" Rims
- PC-2 for 14" and 15" Rims
- PC-3 for 15" Rims
- PC-4 for 17" Rims
- PC-5 for 18" Rims
- PC-6 for 20" Rims
- PC-7 for 12" Rims



RIM GUARD HX-44

RIM GUARD HX-44

Protection cover for aluminum and chrome bolt hole areas while using an impact wrench.



WHEEL SHIELD HX-24

WHEEL SHIELD HX-24

Protection cover for aluminum and chrome wheels. Snaps into place. Shows proper torque sequence numbers for wheel nuts.

Note: O.S.H.A. Regulations require that service personnel use a clip-on air chuck with an inline inflator at a recommended distance that keeps the employee out of the trajectory of the tire and rim. After beads are seated, put tire and rim into approved inflation cage and continue to inflate to prescribed air pressure.

SPECIAL APPLICATIONS



AIR LIQUID VALVES FOR TRACTOR AND ROAD GRADER SERVICE

HALTEC NO.	TR NO.	A	B	BEND ANGLE	VALVE HOLE
TV-618A	TR-618A	1 7/8"	-	-	0.625
TV-618B	TR-618B	1 1/2"	-	-	0.625
TV-618RB	-	1 1/2"	-	-	0.625
TV-621A	TR-621A	1 1/2"	3	65°	0.625
TV-622A	TR-622A	1 3/4"	4 1/2	90°	0.625
TV-623A	TR-623A	1 1/2"	2 1/4	65°	0.625
N-1000	TR-619A	1 7/8"	-	-	0.812
H-50	TR-F910B	1 13/16"	-	-	0.812

TRACTOR AND GRADER TUBE



HALTEC NO.	TR NO.	BASE DIAMETER	CORE HOUSING	VERTICAL HEIGHT	VALVE HOLE
TV-218R	TR-218A	2 1/2"	TV-CH-3	1 7/8"	0.625
TV-220R	TR-220A	2 1/2"	TV-CH-3	2 15/16"	0.625
TV-916R	TR-916A	3 1/4"	R-372	1 7/8"	0.812

Valve assembles with removable core housing for liquid fill. Has Vulc-on back to allow field repair.

CORE HOUSING



TV-CH-1
Fits old-style TR-218 and TR-220 valves.



TV-CH-3
Fits all fast flow air-liquid valves except Super Large Bore.



R-372/TR-CH-16
Fits SP816 tube spud and T-81 & C-100 spud.

AIR/LIQUID EXTENSION

TV-5905 AIR/LIQUID EXTENSION

Used with tractor or grader valve stems. 90 degree angle for more accessible valve.



RIM NUTS & BUSHINGS

B9A BUSHING ASSEMBLY

Fits over TR-218A and TR-220A valves to allow use of valve in B9A the 13/16" valve hole. Consists of B9-1 bushing and B9-2 nut.



B-6 BUSHING

Fits over TR-13 tube valve when used in 5/8" valve hole.



RIM HOLE PLUGS



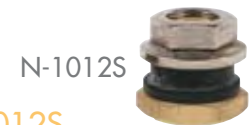
P-15 FOR TUBE-TYPE WHEELS

Used to plug 5/8" rim hole and avoid tube "pouching."



T-30

Used to seal 13/16" rim hole when relocating valve.



N-1012S

Used to seal 5/8" rim hole when relocating valve.



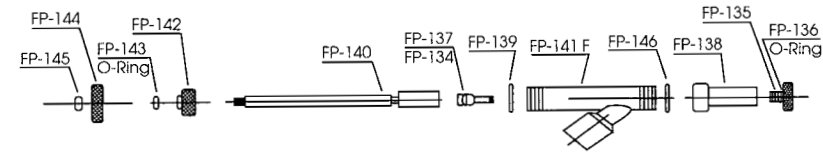
ALSP

Air-liquid spud plug. Used to replace CH-3 core housing.



LN-10 PLASTIC RIM NUT

Rim nut for tractor tube valves TR-218A and TR-220A. For brass rim nut, order LN-10B. See page 44 for TL-LN-10 installation tool.



310 VALVE ADAPTER GUN

Has a 1/2" female pipe thread and will attach to any calcium tire filling pump, it will extract the valve core from a Standard Bore valve or the core housing from a tractor valve. It will securely hold the valve core or core housing up in the gun body during tire filling or evacuation of liquid from a tire. Due to the design, it will permit faster evacuation of liquid from a tire than with other adapter guns. Replaces Deming #1010.

PARTS LIST:

FP-134 Large Bore Core Remover
FP-135 Adapter for Standard Valve (Equipped with FP-136)
FP-136 O-Ring for FP-135 Adapter Remover
FP-137 Standard Valve Core Remover
FP-138 Ejector Union (Equipped with FP-146)

FP-139 Gasket
FP-140 Stem
FP-141F Adapter Body
FP-142 Stem Sealing Nut
FP-143 O-Ring for FP-142 (Stem Seal)
FP-144 Hand Wheel
FP-145 Lock Nut
FP-146 Teflon Gasket

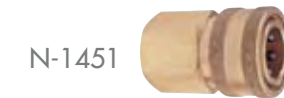
AQF-1 AQUA QUICK FILL HALTEC

Patent No. 5,007,448 Haltec's Aqua Quick Fill is a simple, time-saving tool that allows the user to fill a tractor tire or large off-the-road tire with liquid, and do other tasks while the tire is being filled. No longer does the user have to stand by and vent the excess air pressure. With the AQF-1, air is automatically vented through a side port while the liquid is being injected into the tire. When the tire is filled, the water escapes from the vent hole, indicating that the tire is full.



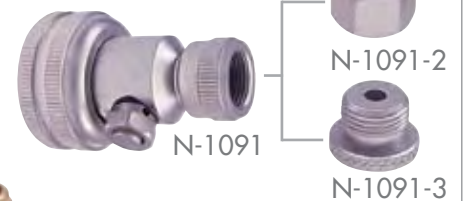
FLUID CONNECTORS

Coupler N-1451, 1/2 NPT female thread. Designed specifically for fluid use.



WATER ADAPTER

N-1091 For liquid fill tires



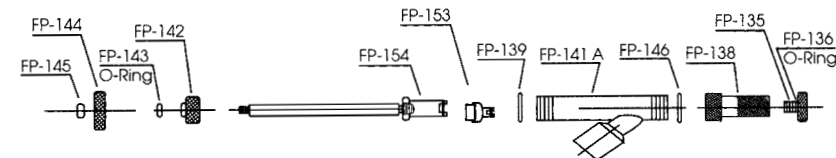
NIPPLE N-1452

1/2 NPT male thread. For fluid use.



N-1057

Flexible extension for 310 gun.



307 URETHANE FILL ADAPTER

Attaches directly to the urethane pump discharge hose with a 1/2" female pipe thread. An adapter bushing is provided to attach the gun union to a standard size tire valve. By removing the adapter bushing, the union can be attached to a tractor-type valve (TR-218A), a grader valve (TR-618A), or any Large Bore valve (TR-650). Delrin plugs are used to seal the valve after the tire is filled with urethane up to the desired pressure. The plugs are self-threaded into the valve by pushing in the hand wheel and turning clockwise. This permanently seals the valve and the adapter can be removed immediately. This is a much more positive method of sealing a tire that has been filled with urethane.

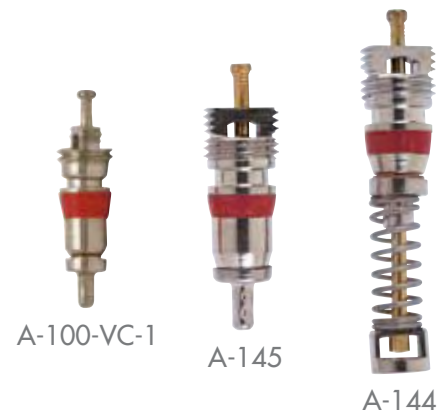
PARTS LIST:

FP-135 Adapter for Standard Valve (Equipped with FP-136)
FP-136 O-Ring for FP-135 Adapter
FP-138 Valve Stem & Ejector Union (Equipped with FP-146)
FP-139 Rubber Gasket
FP-141A Adapter Body
FP-142 Stem Sealing Nut
FP-143 O-Ring for FP-142 (Stem Seal)
FP-144 Hand Wheel
FP-145 Hex Lock Nut

FP-146 Teflon Gasket
FP-153 Collet Adapter for Standard Valve Plug
FP-154 Stem & Collet
FP-155 Snap Ring for FP-153
FP-156 Snap Ring for FP-154
P-250 Standard Valve Delrin Plug
P-251 Tractor & Grader Valve Delrin Plug
P-252 Large Bore Valve Delrin Plug
P-250F European Standard Valve Delrin Plug

AIR/LIQUID VALVES

LIQUID FILL



VALVE CORES

HALTEC NO.	TIRE & RIM NO.	DESCRIPTION
A-100-VC-1	C-1	Standard Bore Heat-Resistant Core for Cars, Trucks and Busses.
A-145	C-2	Large Bore Core (short). Fits 305-32 Threads
A-144	C-2	Large Bore Core (long). Fits 305-32 Threads

TECH TIP

The valve cap is the primary seal on any type of valve; use of sealing cap is the best way to prevent air loss through the valve

VALVE CAPS (STANDARD BORE)

HALTEC NO.	TIRE & RIM NO.	DESCRIPTION
DS-1	-	Double Seal Valve Cap
A-100-VC-2	VC-2	Metal Screwdriver Valve Cap for Removing Valve Cores
A-100-VC-3	VC-3	Metal Dome Valve Cap
A-100-VC-8	VC-8	Plastic Dome Valve Cap
A-100-VC-8G	VC-8	Plastic Green Dome Valve Cap
A-100-VC-12	-	Heavy-Duty Dome Cap for Truck Service. Has Heat-Resistant Sealing Washer.
N-1202	-	Chrome-Plated Hex Cap
57TT	-	Short dome cap.
89TPMS-CAPG	-	Chrome-Plated Plastic Hex Cap for TPMS



VALVE CAPS (LARGE BORE)

HALTEC NO.	TIRE & RIM NO.	DESCRIPTION
A-148	VC-6	Screwdriver Valve Cap. Fits .482-26 Valve Threads.
A-149	VC-7	Hex Valve Cap for Easy Tightening and Removing with Wrench. Fits .482-26 Valve Cap
A-147	A-10	Dome Cap
8807N-3	VC-4	Screwdriver Cap for 8807N-4 and AD-1 Adapters
A-150	-	Large Bore Short Hex Cap
A-151	-	Used Only with Hydro Inflating Valves.
A-152	VC-10	Large Bore Short Dome Cap
A-155	-	Plastic Large Bore Sealing Cap
N-1135	-	Large Bore Deflating Cap



VALVE ADAPTORS

AD-1
Adapts Large Bore valve down to Standard Bore. Fits in 305-32 valve core threads.



8807N-4
Adapts Large Bore valve down to Standard Bore. Fits over .485-26 valve cap threads.



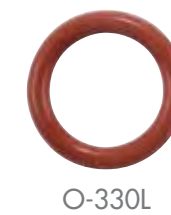
GROMMETS

HALTEC NO.	TIRE & RIM NO.	FITS	USED ON
G-166	RG-7	.625 Valve Hole	TV-618, 621A, 622A, 623A
G-170	RG-15	.625 Valve Hole	TV-500 Series, TV-570 Series
G-162	RG-16	.812 Valve Hole	Turret Valves, PB-210, H-1000
G-160	RG-22	.812 Valve Hole	H-41, T-81, T-30, DS-385, DS210
G-172	RG-46	.625 Valve Hole	TV-509, 510, 511
G-174	RG-48	.625 Valve Hole	TV-513, 515
G-165	-	.812 Valve Hole	K-431, K-665
G-170S	-	.625 Valve Hole	Heat-Resistant Grommet for TV-570 Series
5976-5	RG-54	.453 Valve Hole	TV-416, 416L, 6008
5976-6	RG-39	.625 Valve Hole	TV-416, 416L
G-550	RG-70	.975 Valve Hole	Fits TV-550 Series



HEX NUTS

HALTEC NO.	TIRE & RIM NO.	FITS	USED ON
464	HN-1	.485-26	L.B. Valves, 753S, 810F, 867, TV-618A, 621A, 622A, 623A
LN-1	HN-2	-	FE-300 Series
10071	HN-13	.406-26	TV-500 Series, TV-570
451	HN-15	11/16-16	H-41, T-30
HN-17	HN-17	.406-28	TV-509, 510, 511
HN-18	HN-18	.406-28	TV-513, 515
HN-21	HN-21	-	TV-540 Series
B-222	HN-80	11/16-24	M-1900, M-1950, H-4000, MR-800, MR-850, T-81
B9-2	LN-13	11/16-24	B9A Assembly
452	-	.485-26	K-431
463	-	-	753S, 810F (Jam Nut)
HN-22	HN-22	.375-32	H-543C, TV-540, TV-550 Series
MSN-4	HN-23	.375-32	70MS-7



O-RINGS

HALTEC NO.	TIRE & RIM NO.	USED ON
A-126	-	R-762S, R-525 & SLB Angle Connections
A-127	-	R-520, R-372, R-521
O-320	-	Swivel Valves, H-43, H-42
10008	-	T-670
10009	-	M-5000
O-330L	RG-30	TR-540 Series Valves
A-128	-	DS-215, DS-226



WASHERS

HALTEC NO.	TIRE & RIM NO.	FITS	USED ON
453	-	11/16-24	K-431, K-665
10058	RW-8	.406-28	TV-500 Series, TV-570 Series
W-1101-1	RW-11	.485-26	TV-618A, TV-621A, 622A, 623A
RW-13	RW-13	.410-28	TV-416

VALVE CORES, CAPS, ADAPTORS

GROMMETS, HEX NUTS, WASHERS

DUAL FOOT TRUCK SERVICE GAUGE

Haltec offers a wide variety of service gauges to accommodate the numerous tire and wheel configurations encountered by the service personnel. Choose the gauge that best fits your particular needs.

DUAL FOOT TRUCK SERVICE GAUGE

HALTEC #	CALIBRATION	INCREMENTS	BAR	CHUCK STYLE	FINISH
GA-135	10-150 PSI	2 PSI	Nylon	Angled Chuck	Chrome
GA-135S	10-150 PSI	2 PSI	Metal	Angled Chuck	Chrome
GA-135-ADJ**	10-150 PSI	2 PSI	Metal	Angled Chuck	Chrome
GA-155	10-150 PSI	2 PSI	Nylon	Straight-on 30° Reverse	Chrome
GA-155S	10-150 PSI	2 PSI	Metal	Straight-on 30° Reverse	Chrome
GA-155S-RCL**	10-150 PSI	2 PSI	Metal	Straight-on 30° Reverse	Chrome
GA-155-ADJ**	10-150 PSI	2 PSI	Metal	Straight-on 30° Reverse	Chrome
GA-165*	10-150 PSI	2 PSI	Nylon	Straight-on 30° Reverse	Black Polyurethane
GA-175*	10-150 PSI	2 PSI	Nylon	Angled Chuck	Black Polyurethane
GA-140	10-160 PSI	2 PSI	Nylon	Angled Chuck	Chrome/Poly
GA-185	10-150 PSI	2 PSI	Nylon	Straight-on 180° Reverse	Chrome
GA-185S	10-150 PSI	2 PSI	Metal	Straight-on 180° Reverse	Chrome
DT-150	0-150 PSI	.5 PSI	N/A	Angled Chuck	Chrome
GA-185RCL**	10-150 PSa	2 PSI	Metal	Straight-on 180° Reverse	Chrome

**Recalibratable, *Extended Head



DUAL FOOT TRUCK HIGH-PRESSURE GAUGE

DUAL FOOT TRUCK HIGH-PRESSURE GAUGE

HALTEC #	CALIBRATION	INCREMENTS	BAR	CHUCK STYLE	FINISH
GA-130	20-120 PSI	2 PSI	Nylon	Angled Chuck	Chrome
GA-150	20-120 PSI	2 PSI	Nylon	Straight-on 30° Reverse	Chrome
GA-160*	20-120 PSI	2 PSI	Nylon	Straight-on 30° Reverse	Black Polyurethane
GA-170*	20-120 PSI	2 PSI	Nylon	Angled Chuck	Black Polyurethane

*Extended Head



TIRE GAUGE GRIP

TGG-1 TIRE GAUGE GRIP

Allows a positive grip on your gauge during inclement weather conditions and serves as a protective cushion should the gauge be inadvertently dropped. Can be used on all dual foot truck service gauges.



PENCIL TIRE GAUGES



HALTEC #	CALIBRATION	INCREMENTS	BAR	SERVICE	FINISH
GA-100	1-20 PSI	1/2 PSI	Nylon	Garden Tractors, ATV's	Chrome
GA-105	10-50 PSI	1 PSI	Nylon	Passenger Tire	Chrome
GA-110M	10-50 PSI/73-325 kPa	1 PSI	Nylon	Passenger Tire	Chrome
GA-115	20-120 PSI	2 PSI	Nylon	Truck High Pressure	Chrome
GA-120M	20-120 PSI/150-800 kPa	2 PSI	Nylon	Truck High Pressure	Chrome
GA-125	5-45 PSI	1 PSI	Nylon	Air-Liquid Tires	Chrome
GA-145	10-75 PSI/70-500 kPa	1 PSI	Nylon	Radial & Spare Tire	Chrome
GA-146	20-90 PSI	1 PSI	Nylon	Radial & Light Truck	Chrome

PENCIL TIRE GAUGES

Haltec Pencil-Type Tire Pressure Gauges have a highly polished finish with an easy-to-read, 4-sided nylon indicating bar and a handy pocket clip. NOTE: All pencil gauges have a chuck guide to assure gauge fits squarely on the tire valve. This prevents air leakage and guarantees accurate pressure readings.

GA-100-DIS

Colorful display of 10 gauges of our GA-100 model

GA-115-DIS

Colorful display of 10 gauges of our GA-115 model

GA-105-DIS

Colorful display of 10 gauges of our GA-105 model

*Private Label Gauges Available.
Call For Details.
1-800-321-6471*



N-1420H TRUCK TREAD DEPTH GAUGE

- Calibrated in millimeters and 1/32nds of an inch.
- Measures shoulder wear as well as tread depth.
- Durable metal construction, chrome-plated.
- Comes in a clear protective plastic pouch.
- Can be custom imprinted.
- Pocket-size.



GA-190 TIRE TREAD DEPTH GAUGE

Quickly and accurately measures how much tread is left on tire. Calibrated in 1/32" units and millimeters. Chrome-plated brass with pocket clip.

SERVICE GAUGES



DT-105



GA-850-370

DIGITAL AIR GAUGES

HALTEC NO.	OPERATING RANGE	INCREMENTS (PSI)	APPLICATION
GA-850-330	0-160	0.5	Standard Bore air gauge w/CH-330 dual foot air chuck
GA-850-350	0-160	0.5	Standard Bore air gauge w/CH-350 dual foot air chuck
GA-850-370	0-160	0.5	Standard Bore air gauge w/CH-370 dual foot air chuck
DT-105	0-100	0.5	Standard Bore digital air gauge
GA-850-377S	0-160	0.5	Fits Large Bore Digital Air Gauge with 377S air chuck

DIAL AIR GAUGES

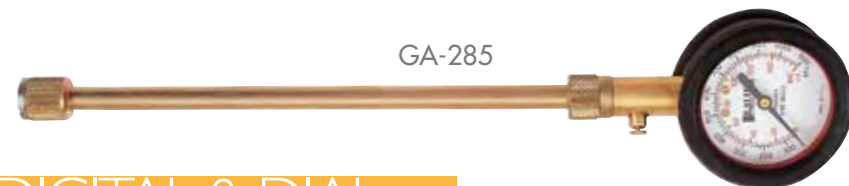
HALTEC NO.	OPERATING RANGE	INCREMENTS (PSI)	APPLICATION
GA-274	0-160	5	14" Standard & Large Bore Air Liquid Gauge
GA-276	0-160	5	18" Standard & Large Bore Gauge w/Extension Handle & bleeder valve
GA-290	0-160	1	12" Standard & Large Bore Air Master Gauge equipped with recalibration feature
N-1055	0-160	5	12" Standard Bore Air Gauge; equipped with an CH-335 dual foot air chuck
GA-285	0-160	5	10" Dial Gauge with Rigid Extension
GA-289	0-160	5	Replacement Dial Gauge
N-1510	0-160	5	Cap Gauge; screws onto Large Bore & Super Large Bore valves for inspection of tire pressure



GA-290



N-1510



GA-285



GA-276

LARGE BORE GAUGES

These gauges work with all Large Bore, Super Large Bore, Z-Bore, and Mega-Bore products.



GA-240 STRAIGHT PENCIL GAUGE

Straight-on chuck fits Standard and Large Bore valves. Calibrated 20-120 psi in 2 lb. increments. Furnished with pocket clip.



GA-250 HIGH PRESSURE GAUGE

10-150 lbs. in 3 lb. units. For Standard and Large Bore valves. Has nylon indicating bar and Haltec Posi-Seal washer.

GA-250S

Same as above with metal indicating bar.



GA-255 LARGE BORE SWIVEL FOOT GAUGE

Quality Features:

- Nickel-plated brass
- Nylon slide bar. Easy to read.
- Calibrated 10-150 in 2 lb. units
- Swivels 360° for those hard-to-reach valves. Haltec Posi-Seal replacement washer (10095) available.

GA-255S

Same as above with metal indicating bar.



N-1410 OFF-HIGHWAY TIRE TREAD DEPTH GAUGE

Indicating bar is calibrated with 32nds on one side, other side is millimeters. Has magnified sight-glass for easy readability. Comes with a carrying holster. The finest instrument available.



5131-LARGE BORE TREAD DEPTH GAUGE

Two piece gauge made up of slide tube and indicator. Calibrated 0-6" in 1/32" units and 7 to 152 mm metric. Tubing spans tread lugs on off-road tires.

TL-680 THREE-WAY LARGE BORE TOOL

For removing large bore cores, hex caps and screw driver caps.



TL-680

TL-690 FOUR-WAY LARGE BORE CORE TOOL

Thread repair for core and cap threads and core remover. For Large Bore and Super Large Bore.



TL-690

TL-695

The TL-695 is a four-way tool that repairs the internal and external threads on air-liquid valve spuds. It also is a Large Bore valve core insertion tool, and it repairs internal and external threads.



TL-695

LARGE BORE TOOLS



ASP-10 DEFLATION ASPIRATOR
Tube deflation aspirator for Large Bore.

DIGITAL & DIAL GAUGES

LARGE BORE GAUGES, TOOLS, CHUCKS

LARGE BORE TOOLS



N-1610 LARGE BORE CORE TOOL



N-1710 LARGE BORE CORE TOOL

Special valve core screwdriver tool. Sliding sleeve allows positive grip on valve core for those hard-to-reach valves.



N-1810 LARGE BORE HEX CAP REMOVER

With plastic handle for positive grip - OAL 10".



N-1910 LARGE BORE CORE REMOVER

Has plastic handle for positive grip - OAL 6".



TL-631 SUPER LARGE BORE RETHREADING TOOL

Used to rethread 11/16" - 24 thread on any Super Larger Bore valve.



TL-LN-10

The TL-LN-10 is a nut driver that installs the LN-10 nut onto the TV-218A/TV-220A tractor tire valve.



8909-C

Guides, aligns, and holds Large bore valve through rim hole while mounting the tire.

LARGE BORE AIR CHUCKS

322 LARGE BORE DUAL FOOT AIR CHUCK

45° angle chuck allows easy access to the tire valve. Has 1/4" NPT female thread.



326 SCREW-ON AIR CHUCK

Has .485-26 internal thread and 1/2" NPT external thread. Full flow for seating of tire beads.

377 LOCK-ON AIR CHUCK (LONG)

Chuck locks on valve when cocked on threads. Has greater air flow and seat cannot be blown out if seal fails. Has 1/4" NPT female thread. Replacement washer 313.

328 LOCK-ON AIR CHUCK (SHORT)

Chuck locks on valve when cocked on threads. Has greater air flow and seat cannot be blown out if seal fails. Has 1/4" NPT female thread.



H-4660A CLIP-ON AIR CHUCK

Securely locks onto valve when sleeve is pushed forward, releases when sleeve is pulled back. Has 1/4" NPT female thread.



10013 LARGE BORE SCREW-ON CHUCK

Fits 3/8" ID air hose. Screws on to Large Bore valves. Open and close the valve core by turning the knob on top of the chuck.



CH-315 BALL FOOT AIR CHUCK WITH CLIP

3/4" hex, with 1/4" NPT female thread. Heavyduty spring firmly holds chuck onto valve while inflating tire. Available for use with tire changers. Order CH-315-OP. Uses replacement washer 5565-3.



CH-340 LOCK-ON AIR CHUCK

Securely locks onto valve when sleeve is pushed forward. Releases when sleeve is pulled back. 1/4" NPT female thread. Available for use with tire changers. Order CH-340-OP.



H-5265

The H-5265 is a specially designed air chuck that locks onto the cap threads of a Standard Bore valve stem when the sliding sleeve is pushed to the forward position. The chuck releases when the sleeve is pulled back. Available for use with tire changers. Order H-5265 OP.



CH-305

Ball Foot Air Chuck 3/4" hex, brass with 1/4" NPT female thread. Available for use with tire changers. Order CH-305-OP.



CH-318 CHUCK CLIP

For CH-315 and CH-315-OP.



EUROPEAN-STYLE CLIP-ON AIR CHUCKS

CH-320

Very similar to our N-1200 European-style clip-on air chuck. This is a closed-type chuck and offers the best seal available. Has serrated shank for 1/4" I.D. hose.



CH-360

This chuck features the popular European-style clip with a brass 1/4" female fitting. Compact, durable and easy to use, this chuck is available either closed (CH-360) or open (CH-360-OP). Uses replacement washer 10140.

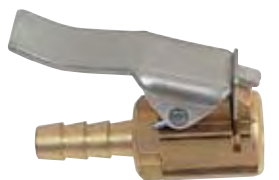


CH-360S

This new chuck includes all the features of our standard CH-360, with the added benefit of a spring loaded deflector pin. Designed specifically to ensure proper seal closure during multi-tire and nitrogen conversion applications.



N-1199 N-1200



N-1199 fits 3/16" hose.



N-1200 fits 1/4" I.D. hose-open style.

LARGE BORE GAUGES,
TOOLS, CHUCKS

SAFETY!

THESE PRODUCTS, AS WELL AS ALL TIRE TOOLS, SHOULD NEVER BE USED BY PERSONS UNLESS THEY HAVE BEEN TRAINED PROPERLY ACCORDING TO O.S.H.A. REGULATION #29CFR 1910.177 ENTITLED "SERVICING SINGLE-PIECE & MULTI-PIECE RIM WHEELS."

STANDARD BORE
AIR CHUCKS



CH-300

The Haltec CH-300 Lock-On Air Chuck with a small head design makes for easy access to hard to-reach valves on inside dual wheels. The extended head design improves the lock-on feature. Has 1/4" NPT female threads.



CH-330-LO DUAL FOOT AIR CHUCKS

Straight-on 30° reverse angle chuck. Available with the lock-on feature. Has 1/4" NPT female thread. 6" long.

CH-330 Dual Foot Air Chucks: Same as CH-330-LO (above) except without lock-on feature.



CH-335-DUAL FOOT AIR CHUCK

Dual foot for hard-to-reach tractor, dual wheel trucks and bus tires. 1/4" NPT female threads. For standard air line service. 6" long.



CH-350-LO

A new design offers greater durability and is more user friendly on the straight-on and 30° reverse angle chuck. This 6" -long chuck finished with an attractive black polyurethane coating has 1/4" NPT female threads.



CH-333-LO

Similar to CH-330-LO but with extra long length of 14".



CH-370-LO

A special air chuck with a straight-on connection and a 180° reverse angle chuck allows easier access to valves located in tight, hard-to-reach places. The CH-370-LO is 6" long and has 1/4" female threads.



CH-355-LO

Similar to CH-350-LO but with extra long length of 14".

SHUR-LOCK VALVE CORE TOOLS

HALTEC NO.	DESCRIPTION	LENGTH
TL-131	Valve Core Tool for Standard Bore Cores	7/8"
TL-132	Valve Core Tool for Cars	2"
TL-133	Valve Core Tool for Trucks	5 1/4"
TL-134	Valve Core Tool for Large Bore Cores	4"



SURE-LOCK VALVE CORE TOOLS

A special design allows the valve core to stay attached to the tool after it is removed from the valve. A great tool to keep the valve core from getting dropped or lost.

STANDARD BORE AIR CHUCKS



TL-612 STANDARD BORE CORE TOOL

With an overall length of 8" and oversized handle, the Haltec TL-612 provides a firm grip for inserting and removing valve cores.



TL-620 STANDARD BORE CORE TOOL

Plastic handle provides firm grip for inserting and removing valve core.



TL-625 STANDARD BORE VALVE CORE TOOL

How many times have you pushed the valve core tool through your pocket? Here's a tool with a recessed probe that fits easily in any pocket.



TL-630 HEX NUT DRIVER FOR 500 SERIES TRUCK VALVES

Installation tool for tubeless clamp-in metal valves. Accommodates all lengths of tubeless truck valves including the TV-574.



TL-632 TRUCK EXTENSION SERVICE TOOL

This tool tightens both metric (European) and domestic type extensions. This tool is broached to engage the metric hex at the extension top and will reach the hex on a 7" U.S.A.-type extension.



TL-633 VALVE CAP TOOL

The TL-633 makes it easy to remove and install valve caps on inside dual wheels. Designed for aluminum wheels with small hand holes, it comes with a protective sleeve to prevent scratching. Also works great at removing tight or cross-threaded caps. Positive hold while valve is serviced. Keeps cap in tool. Length 8.25" without handle.



TL-635 STANDARD BORE VALVE CORE TOOL

Haltec equivalent to Schrader 2688 and Eaton 5406. Tool is made from hex steel, making it very sturdy, yet economical.



TL-645 VALVE FISHING TOOL

Combines valve core wrench and deflating pin with flexible cable for fishing valve thru rim hole. Available in 24" - TL-645-24



TL-650 FISHING TOOL

Guides, aligns and holds valve through valve hole while mounting tire. 10" Length



TL-665 VALVE STEM INSTALLATION TOOL

Rugged tool handles any length valve in any size rim. Screws over valve threads and quickly installs valve into valve hole by applying pulling pressure.

VP-15 VALVE PAL VP-8 VALVE PAL JR.

Tool removes and reinstalls standard valve caps



TL-610 STANDARD BORE 4-WAY VALVE TOOL

Repairs and reconditions inside and outside valve threads. Inserts and removes cores. Corrosion resistant, cadmium-plated.



TL-615 STANDARD BORE 2-IN-1 VALVE TOOL

Combination valve core remover and deflator. Corrosion resistant, cadmium-plated.



ASP-1 TUBE STANDARD BORE DEFLATING ASPIRATOR

Creates vacuum by screwing aspirator onto valve mouth and applying air chuck to threaded inlet. Fits Standard Bore valves.



TL-685 CORE INSTALLATION TOOL

STANDARD BORE TOOLS



TYRECHECK BY HALTEC CORPORATION IS IDEAL FOR THE OTR MARKET, TRUCK & BUS MARKET

The most extensive, integrated vehicle data management system in the world is now available in the United States EXCLUSIVELY through HALTEC CORPORATION. Information is power, and TYRECHECK provides you with accurate data so you can manage and protect your investment. Vehicle inspection data is uploaded electronically to your system through the use of Bluetooth Technology for maximum accuracy and timeliness. No more hand-written inspection sheets which must then be manually entered. The proprietary web-based interface allows you to set and enforce policies at the customer, fleet, vehicle, even down to the tire level. This same interface allows you to produce work order lists which are completed electronically based on criteria you establish. And you'll know that the work is getting done in the manner you expect because the work orders will be automatically uploaded to your system as they are being filled out. TYRECHECK gives you the information you need when you need it so you can make the best decisions possible to protect your investment. Data synchronization... Maximum accuracy... data management and results. The technology that has become the standard around the world is now available to you exclusively through HALTEC CORPORATION.



WHY TYRECHECK?

COMPLETE INTEGRATED MANAGEMENT SOLUTION

VEHICLE INSPECTION

- Inspect and measure tire tread/pressure using existing tools and equipment
- Bluetooth device manager records data as you work

WORK ORDERS/MAINTENANCE

- Establish and maintain work orders and vehicle maintenance instructions based on policies you set and enforce
- Work orders filled out and vehicle maintenance recorded electronically



DATA MANAGEMENT

- Bluetooth device manager allows the portable management of data
- Allows for the efficient & timely management at the customer, fleet, vehicle or tire level

IT'S THE COMPLETE SOLUTION

- Realize up to 50% Labor Savings
- Immediate access to information via web and email
- Automatic work order lists
- Full vehicle history at your fingertips

INCREASES CONTROL & REDUCED COSTS

- Fleet wide data control and reporting
- Policy enforcement on a local level
- Electronic worksheets
- Control costs & better planning



INFLATOR SYSTEMS



PRIMARY FEATURES & BENEFITS ON ALL INFLATORS:

- 5 to 145 psi operating range, adjustable in 1 psi increments
- Accurate to .3 psi
- Nitrogen compatible
- 110 volt with 12 volt option
- All weatherproof enclosures; Note - The MDA model has a polycarbonate enclosure, all other models have a die-cast aluminum enclosure
- Large, easy to read, backlit, LCD screens
- Capable of setting the bead on a tire when proper operating conditions are met
- All can be private labeled at no additional cost. Minimum order quantity is 50
- Self-calibrate during power up or every 6 minutes

DISTINCTIONS TO CONSIDER:

- The 89-MXA, 89-MDA and 89-XDA use a 1/4" inlet and are designed for "Single Tire Inflation"
- Single tire inflation requires an "Open Style" air chuck
- All hose and accessories on the 89-MDA, 89-MXA and 89-XDA can be interchanged
- When inflating a single tire, the hose length should not exceed 50'
- The 89-XDB and 89-XDZ use a 1/2" inlet and outlet to allow for greater air flow and the ability to inflate 1-4 tires SIMULTANEOUSLY
- Multiple tire inflation requires a "Closed Style" air chuck (CH-360S). A 4-way manifold (89-HMVN) is required for multiple tire inflation
- When inflating multiple tires, the maximum hose length from the manifold is 25' from each of the 4 outlets
- All hose and accessories on the 89-XDB and 89-XDZ can be interchanged. When ordering hose for use with manifold, the part number ends with a M
- Currently Haltec offers hose in red, blue and green.



TECH TIP

When operating dual wheels, an inflation mismatch greater than 5psi creates significant difference in the circumference of the tires. The tires will travel in the same distance in a single revolution; however the larger tire will drag the smaller tire. This process results in considerably greater tread wear on the smaller tire.

During testing, the 5psi differential between the dual wheels, created a 516" circumference difference between the tires. This circumference difference results in the larger tire dragging the smaller tire 13 feet in a single mile. Over the course of a typical 100,000 mile year the tire is being dragged 246 miles

Please keep in mind, the above example is based on a 5PSI differential between one set of dual tires. Imagine the tire wear results when, in most cases, the psi difference is greater and the fleet owns multiple sets of dual wheels.

TECHNICAL SPECIFICATIONS

CONSTRUCTION	DIE CAST ALUMINUM ENCLOSURE POLYCARBONATE ENCLOSURE
POWER REQUIREMENT	110V a.c. or 12V d.c.
UNIT OF MEASUREMENT	1 psi, kpa & bar available
OPERATING RANGE	5-145 psi (other ranges available)
OPERATING TEMPERATURE	14 ° F to 122° F (-4° F to 122° F with optional heater)



89-MDA AUTOMATIC TIRE INFLATION SYSTEM; IDEAL FOR: QUICK LUBE AND OIL CHANGE INDUSTRY

- Inflates or deflates automatically
- Accurate to within .3 psi
- Self calibrates every 6 minutes
- 1/4" inlet & outlet
- Can be customized to any corporate image & language text
- Maintenance free
- Indoor use only

89-XDA AUTOMATIC TIRE INFLATION SYSTEM; IDEAL FOR: VEHICLE SERVICE CENTERS, AUTOMOBILE DEALERSHIPS, AND RENTAL FACILITIES

- The heavy duty, weatherproof and vandal resistant enclosure of the 89XDA makes it ideal for almost any indoor or outdoor location.
- Inflates or deflates automatically
- Accurate to within .3 psi
- Self calibrates every 6 minutes
- 1/4" inlet & outlet
- Can be customized to any corporate image & language text
- Maintenance free

89-MXA AUTOMATIC TIRE INFLATION SYSTEM; IDEAL FOR: TIRE CAGES & TIRE CHANGERS

- Compact design for easy mounting
- Inflates & deflates automatically
- Accurate to within .3 psi
- Self calibrates every 6 minutes
- 1/4" inlet & outlet
- Maintenance free
- Can be customized to any corporate image
- Indoor use only

The 89MXA, 89MDA & 89-XDA Automatic Tire Inflation Systems are designed to inflate a single tire at a time, however the service technician may run up to three hose configurations from one unit (drawings demonstrating the basic layout of the systems and their simple 4-button operation available upon request). The hose configurations include

quick connect couplers and open style air chucks. When running a single hose, connect the chuck to the valve stem and the inflator will correct the pressure. When running multiple hoses, an Automatic Switching Valve is required. The ASV is designed for single tire inflation by restricting air flow to the hoses not in use. Service technicians

have found this layout ideal for dual service bay operations, as it allows them to perform other tasks while the tires are automatically and accurately inflated. The 89MXA, 89MDA & 89-XDA also promote employee safety because the system can be set to inflate/deflate and the technician can then back away from the tire.

AUTOMATIC TIRE INFLATION SYSTEM ACCESSORIES FOR 89MXA (RED), 89MDA (GREY) & 89XDA (BLUE) (SINGLE TIRE)

HALTEC NO.	PRODUCT DESCRIPTION
89HKC-12	12' Straight hose w/coupler & CH-360OP air chuck
89HKC-24	24' Straight hose w/coupler & CH-360OP air chuck
89HKC-50	50' Straight hose w/coupler & CH-360OP air chuck
89HKC-25C	25' Blue coil hose w/coupler & CH-360OP air chuck
89HKC-50C	50' Blue coil hose w/coupler & CH-360OP air chuck
89HKT-12	12' Straight hose w/coupler & CH-330 LO-OP air chuck
89HKT-24	24' Straight hose w/coupler & CH-330-LO-OP air chuck
89HKT-50	50' Straight hose w/coupler & CH-330-LO-OP air chuck
89HKI-25	25' Straight hose w/coupler & IN-20 air chuck
89-2 WASV	2-way automatic switching valve (2 hoses)
89-3 WASV	3-way automatic switching valve (3 hoses)
89-3 WTK	3-way automatic switching valve kit (tubing system)
CH-360OP-1	Clip-on style air chuck (open)
CH-330-LO-OP-1	Lock-on style air chuck (Dual Wheels)
IN-20	Core removing & inflation tool (Car)
STAND-4	4' Yellow mounting steel stand w/square base

*Custom hose lengths available upon request.



AUTOMATIC TIRE INFLATORS

MULTIPLE TIRE INFLATION



89-XDB INFLATOR; IDEAL FOR: FLEET OPERATIONS, TIRE SERVICE CENTERS AND TIRE MOUNTERS

- Designed specifically for inflating large OTR tires or multiple truck tires
- Indoor or outdoor use
- Inflates 1 to 4 tires simultaneously
- 1/2" inlet maximizes air flow
- Accurate to within .3 psi



89-XDZ INFLATOR; IDEAL FOR: RETREAD CENTERS, TIRE SERVICE CENTERS AND TIRE MOUNTERS

- Utilizes 1/2" inlet maximizing air flow • Leak detection test
- Equipped with emergency stop control • Multiple purge cycle setting
- Accurate to within .3 psi • Indoor or outdoor use
- Dual LCD screens
- Preset feature stores the 3 most common pressure settings

The **89XDB** Inflator is specifically designed to inflate tires on 19.5" rims and larger or multiple truck tires. The **89XDZ** High Volume/ Over Inflator is specifically designed to over inflate tires on 19.5" rims and larger for the purpose of performing a safety leak test to guard against "zipper leaks". The user programs the **89XDZ** and it automatically inflates the tire to the pre-set over pressure psi and maintains it for a period of seconds or minutes, it then continues the process by deflating the tire to the required psi setting (drawings demonstrating the basic layout of the systems and the simple 4-button operation of the units available upon request). What differentiates these units from our others

is that they utilize a 1/2" inlet hose for the compressed air flowing into the unit, as well as, a 1/2" manifold with coupler for use when filling multiple tires. The inlet hose allows larger tires, one to four, to be inflated much quicker, (3 minutes 45 seconds to inflate 4 tires from 6 to 100 psi). For the **89XDZ**, these features also allow the recommended tire safety checks to be performed on each tire while servicing up to four tires at the same time. The manifold, 89-HMVN, distributes the required air evenly to each hose and upon reaching the desired psi, the digital pressure gauge provides an accurate measurement within .3 psi. The manifold also uses a 1/2" air flow control valve to control the

air flow to the hoses. While the service technician attaches the closed air chucks to the tires, the air flow control valve is in the down position, blocking air flow to the hoses. When the chucks have been securely attached, and the tires are ready for inflation, the technician slides the valve up activating the air flow. At that point the **89XDB** High Volume Inflator will complete the inflating while the **89XDZ** High Volume / Over Inflator will complete the safety leak tests and inflation process. These systems are also extremely safe to operate as the technician can stand away from the tires while the inflation takes place. Both units include the 89-3W; all other accessories need to be ordered separately.

AUTOMATIC TIRE INFLATION SYSTEM ACCESSORIES FOR 89XDB (YELLOW) & 89XDZ (RED)

HALTEC NO.	PRODUCT DESCRIPTION
89HKC-12M	12' Straight hose w/CH-360S air chuck
89HKC-24M	24' Straight hose w/CH-360S air chuck
89HKT-12M	12' Straight hose w/CH-330-LO air chuck
89HKT-24M	24' Straight hose w/CH-330-LO air chuck
89HVI-25	25' Straight hose w/coupler & IN-20 air chuck (Single Tire Application)
89-HMVN	4-way manifold
89-3W	Air flow control valve
CH-360S	Clip-on style air chuck (closed) with spring.
CH-330-LO	Lock-on style air chuck (Dual Wheels)
STAND-4	4' Yellow mounting steel stand w/ square base



89-OEN (110V OR BATTERY) DESIGNED FOR USE WITH NITROGEN GENERATORS

The 89-OEN Nitrogen inflations kits are specifically designed to inflate, deflate and purge the air out of tires, while automatically re-inflating them to a specific psi with Nitrogen. The unit can be programmed to automatically complete from 1 to 6 purges. The purpose of the purge cycles is to increase the level of Nitrogen in the tires. The required number of purges depends on the size of the tires, the age of the tires, and the desired Nitrogen purity. The 89-OEN has a 1/2" inlet and outlet that is capable of servicing up to 4 tires simultaneously. The 89-OEN can be incorporated into any nitrogen generation system. Customers recognize that all the benefits of Nitrogen are negated if the tires are not inflated accurately. Current inline inflators and stick gauges cannot provide the .3psi accuracy of the Haltec Automatic Tire Inflation Systems. The 89-OEN kit uses the same hose and product accessories that apply to all single and multiple tire inflation systems.

TECH TIP

Our Nitrogen inflators can convert all 4 tires on your average mini-van or light truck in approximately 8-9 minutes. Please keep in mind, the technician can be completing other tasks during this time.

AUTOMATIC TIRE INFLATORS



89XDB-G NITROGEN INFLATOR IDEAL FOR:

- Auto Dealerships
- Truck Service Centers
- Any Service Center currently inflating with Nitrogen

89XDB-G compliments any Nitrogen Generator. The Mountable Inflation System allows any technician to set the pressure, attach the nitrogen hoses, and begin the process with a touch of a button. The all-new nitrogen software will purge the air out of any size tire, reinflate with nitrogen, maintaining its accuracy of .3psi. Designate the number of purge cycles to guarantee the purity level needed to obtain the benefits of nitrogen inflation over standard air inflation. The 89XDB-G will convert up to 4 tires at once. The aluminum enclosure enables the system to be mounted in any climate. Optional heater (P/N 89HEAT) for colder climates is available.



89TRL-4 (unit shown mounted on trolley) Up to 4 tires simultaneously.

TECH TIP

Nitrogen molecules leak through your tire 3-4 times slower than the smaller oxygen molecules. Ultimately, maintaining your vehicle's required inflation pressure reduces tire wear, increases your fuel mileage, and provides better vehicle performance.



89TRL-6B (unit shown NOT mounted on trolley) Up to 6 tires simultaneously.

89TRL-6 NITROGEN INFLATOR IDEAL FOR:

- Fleet Operations
- Tire Service Centers
- Auto Dealerships

89TRL offers a mobile solution for single tire nitrogen inflation. The all-new nitrogen software will purge the air out of any size tire, re-inflate with nitrogen, maintaining its accuracy of .3psi. Designate the number of purge cycles to guarantee the purity level needed to obtain the benefits of nitrogen inflation over standard air inflation. Operation is identical to 89XDB-G Inflation System.



89HVI-25



NITRO-1

NITROGEN INFLATION ACCESSORIES FOR THE 89XDB-G (GREEN)

HALTEC NO.	PRODUCT DESCRIPTION
89-3W	Air flow control valve
89-HMVN	4-way manifold
89HVI-25	25' Green hose w/coupler & IN-20 tire chuck (Single Tire Application)
89HVC-12G	12' Green hose w/coupler & CH-360OP-1 clip-on tire chuck (Single tire application)
89HVC-24G	24' Green hose w/coupler & CH-360OP-1 clip-on tire chuck (Single tire application)
89HVC-50G	50' Green hose w/coupler & CH-360OP-1 clip-on tire chuck (Single tire application)
89HVC-12MG	12' Green hose w/CH-360S-1 clip-on tire chuck (Multiple tire application)
89HVC-24MG	24' Green hose w/CH-360S-1 clip-on tire chuck (Multiple tire application)
IN-20	Core removal & inflation tire chuck
STAND-4	4' Yellow mounting stand w/square base
A-100-VC-8G	Green valve caps
89TPMS-CAPG	Chrome plated plastic caps for TPMS valves
NITRO-1	Nitrogen Purity Gauge

- Accurate and easy to use
- Compact and ergonomic in design
- Simple to operate, one button design
- Battery charge indicator
- Auto-power off function
- Replaceable battery and sensor
- Auto diagnostic with error code to simplify troubleshooting

NITROGEN INFLATION ACCESSORIES FOR THE 89TRL

HALTEC NO.	PRODUCT DESCRIPTION
TRL-BAT	Plug & rechargeable Battery
TRL-H-25	25' black hose
TRL-H-IN-20	6" black hose w/IN-20
TRL-H-CH-360OP	6" black hose w/CH-360OP-1
TRL-H-N1200	6" black hose w/small clip on air chuck
TRL-COUP	Silver coupler
IN-20	Core removal & inflation tire chuck
A-100-VC-8G	Green valve caps
NITRO-1	Nitrogen Purity Gauge
89TPMS-CAPG	Chrome plated plastic caps for TPMS valves



A-100-VC-8G



89TPMS-CAPG

AUTOMATIC TIRE INFLATORS

I-405 INFLATING GAUGE

Meets OSHA Requirements. Inflation unit with in-line gauge. Light-weight aluminum body with brass calibration bar and O-rings seals. Calibrated 10-120 psi in 2 lb. increments - precise inflation control - 1/4" female NPT inlet with CH-360-OP clip-on air chuck. Also available with hose lengths of 3' or 9'. Specify length when ordering.

HALTEC NO.	DESCRIPTION	HOSE LENGTH	AIR CHUCK
I-405-3M	Inflator with Clip-on Air Chuck	3'	CH-360-OP
I-405-6M	Inflator with Clip-on Air Chuck	6'	CH-360-OP
I-405-9M	Inflator with Clip-on Air Chuck	9'	CH-360-OP
I-405-12M	Inflator with Clip-on Air Chuck	12'	CH-360-OP
I-405-3LOM	Inflator with Lock-on Air Chuck	3'	CH-330-OP
I-405-6LOM	Inflator with Lock-on Air Chuck	6'	CH-330-OP
I-405-9LOM	Inflator with Lock-on Air Chuck	9'	CH-330-OP
I-405-12LOM	Inflator with Lock-on Air Chuck	12'	CH-330-OP



I-405-LO INFLATING GAUGE

Same as I-405 above except with CH-330-LO lock-on chuck for use on aluminum wheels.

I-405-3LOM

I-430-6



AIR MASTER DIAL GAUGE

Haltec Air Master Dial Gauge comes in a variety of hose lengths and chuck types to meet the varied needs of the tire professional. The inflator is compact with an ergonomic design that makes the gauge comfortable to operate and easy to use. One button allows the operator to inflate or deflate. the gauge reads from 4 to 140 psi in 2 pound increments and is also calibrated from 0 to 10 bars in .1 bar increments. The dial gauge is protected with a ribbed rubber shroud.

HALTEC NO.	DESCRIPTION	HOSE LENGTH	AIR CHUCK
I-420	Dial Gauge Inflator	16"	N-1200
I-415-3	Dial Gauge Inflator	3'	CH-360-OP
I-415-6	Dial Gauge Inflator	6'	CH-360-OP
I-415-9	Dial Gauge Inflator	9'	CH-360-OP
I-415-12	Dial Gauge Inflator	12'	CH-360-OP
I-430-3	Dial Gauge Inflator	3'	CH-330-OP
I-430-6	Dial Gauge Inflator	6'	CH-330-OP
I-430-9	Dial Gauge Inflator	9'	CH-330-OP
I-430-12	Dial Gauge Inflator	12'	CH-330-OP



I-406M

I-406M INFLATING GAUGE

Has 12" of hose and CH-335 dual foot air chuck to service small diameter wheels. Gauge is calibrated 10-120 psi in 2lb increments.



I-450 DIGITAL INFLATION GAUGE

Easy to read digital inflation unit calibrated from 0 to 150 psi in 0.5 psi increments. Available in a variety of hose lengths and chuck types to meet your needs. Entire body is protected with a rubber cover. The LCD readout is backlit for ease of reading in dark areas and the battery is replaceable.



I-400 LARGE BORE INFLATOR

Same as I-401 below except with 10013 Large Bore screw-on chuck.



I-402 SERIES SAFETY INFLATOR

Available in 3' and 6' lengths. Has pressure check valve for exact pressure check with your pencil gauge. Has manual bleed valve for adjusting tire pressure and CH-360-OP flow through clip-on chuck.

I-401 EXTRA HEAVY DUTY LARGE BORE INFLATOR WITH STRAIGHT CLIP-ON CHUCK

Five-foot Large Bore inflator has 1/2" ball valve with provision for checking air pressure and H-4660A straight lock-on chuck. Rubber hose is 5' long. Inflator has a 3/8" I.D. for maximum air flow. Threaded for 1/2" male NPT hose fittings.



I-404 HEAVY-DUTY HOSE INFLATOR

Heavy-duty inflator has two separate clip-on chucks with five-foot hoses. One chuck, CH-360, fits Standard Bore valves and the other, H-4660A, Large Bore valves. Has spring-loaded, handoperated valve and has provisions for checking air pressure during inflation. Threaded for 1/4" male NPT hose fittings.



I-408 DUAL TIRE INFLATOR GAUGE

Has five-foot hose to a tee connection, 2' of hose on each side with 12" sliding sleeve, lock-on chuck for easy access to inner dual and dual foot lockon chuck for outer dual tire. Allows user to engage and disengage chuck quickly. As the same air source serves the unit, both tires are automatically inflated equally. Lock-on chuck fits any standard truck valve stem or the DS-1 double seal cap.



I-409 LARGE BORE INFLATION GAUGE

Large Bore inflation unit with in-line gauge. Equipped with H-4660A chuck and a 6' hose. Gauge is calibrated 10-120 psi in 2 lb. increments.



10013 LARGE BORE SCREW-ON CHUCK
Fits 3/8" I.D. air hose.

SAFETY!

THESE PRODUCTS, AS WELL AS ALL TIRE TOOLS, SHOULD NEVER BE USED BY PERSONS UNLESS THEY HAVE BEEN TRAINED PROPERLY ACCORDING TO O.S.H.A. REGULATION #29CFR 1910.177 ENTITLED "SERVICING SINGLE-PIECE & MULTI-PIECE RIM WHEELS."

INFLATORS

Haltec couplers and nipples are long-lasting, high performance products. They are rated for pressure up to 300 psi with an operating temperature range of -40° F to +250° F. The 1/4" couplers have a 4-ball locking device while the 3/8" and 1/2" series offer an 8-ball locking device. The nipples have hardened wear points and are made from solid barstock construction to provide long service life. Made in U.S.A.



1/4" TRU-FLATE TYPE

HALTEC NO.	DESCRIPTION	NPT	THREAD TYPE	SCHRADER	DILL	AMFLO	CAMEL	MILTON	TRU-FLATE
CO-101	Coupler	1/4"	Male	3503	D-12	C1	61-524	786	13-124
CO-103	Coupler	1/4"	Female	3504	D-13	C2	61-523	785	13-134
CO-105	Coupler	1/4"	Female	3505	-	C2R	61-487	-	-
NI-102	Nipple	1/4"	Male	3506	D-2C	CP1	61-538	783	12-124
NI-104	Nipple	1/4"	Female	3507	D-3C	CP2	61-539	784	12-134
NI-106	Nipple	fits 302-32	Female	3508	D-6C	CP12	-	779	12-104



1/4" ARO TYPE

HALTEC NO.	DESCRIPTION	NPT	THREAD TYPE	SCHRADER	DILL	AMFLO	CAMEL	MILTON	TRU-FLATE
CO-501	Coupler	1/4"	Female	3526	8888	C38	61-526	775	13-324
NI-502	Nipple	1/4"	Male	3529	8891	CP37	61-528	777	12-325
NI-504	Nipple	1/4"	Female	3530	8889	CP38	61-529	778	12-335



1/4" LINCOLN TYPE

HALTEC NO.	DESCRIPTION	NPT	THREAD TYPE	SCHRADER	DILL	AMFLO	CAMEL	MILTON	TRU-FLATE
CO-701	Coupler	1/4"	Female	3528	123	C28	61-548	790	13-434
NI-702	Nipple	1/4"	Male	3531	126	CP27	61-550	791	12-424
NI-704	Nipple	1/4"	Female	3532	125	CP28	61-551	792	12-434



1/4" INDUSTRIAL TYPE

HALTEC NO.	DESCRIPTION	NPT	THREAD TYPE	SCHRADER	DILL	AMFLO	CAMEL	MILTON	TRU-FLATE
NI-202	Nipple	1/4"	Male	5138-11	110	CP21	61-578	727	12-225
CO-301	Coupler*	1/4"	Female	5138-12	-	-	-	-	-
NI-204	Nipple	1/4"	Female	5139-11	109	CP20	61-579	728	12-235
CO-303	Coupler*	1/4"	Male	5139-12	-	-	-	-	-
CO-201	Coupler	1/4"	Female	5142-12	102	C20	61-573	715	13-235



3/8" INDUSTRIAL TYPE

HALTEC NO.	DESCRIPTION	NPT	THREAD TYPE	SCHRADER	DILL	AMFLO	CAMEL	MILTON	TRU-FLATE
CO-204	Coupler	3/8"	Female	3541	117	C26	61-482	1835	13-537
NI-206	Nipple	3/8"	Male	3542	121	CP25	61-484	1837	12-527
NI-208	Nipple	3/8"	Female	3543	122	CP26	61-485	1838	-



3/8" TRU-FLATE TYPE

HALTEC NO.	DESCRIPTION	NPT	THREAD TYPE	SCHRADER	DILL	AMFLO	CAMEL	MILTON	TRU-FLATE
CO-107	Coupler	3/8"	Male	3515	-	C5	61-554	1806	13-107
CO-109	Coupler	3/8"	Female	3516	D-15	C6	61-553	1805	13-613
NI-108	Nipple	3/8"	Male	3517	D-2E	CP5	61-558	1807	12-605
NI-110	Nipple	3/8"	Female	3518	D-3E	CP6	61-559	1808	12-612



1/2" TRU-FLATE TYPE

HALTEC NO.	DESCRIPTION	NPT	THREAD TYPE	SCHRADER	DILL	AMFLO	CAMEL	MILTON	TRU-FLATE
CO-111	Coupler	1/2"	Female	3512	D-17	C10	61-563	1815	13-713
CO-111R	Coupler	1/2"	Female	D-17R	C10R	-	-	-	13-712/713
NI-112	Nipple	1/2"	Male	3513	D-2F	CP9	61-568	1817	12-705
NI-113	Nipple	1/2"	Female	-	-	CP18	-	1858	12-762
CO-112	Coupler	1/2"	Male	-	-	-	-	-	-

UNIVERSAL COUPLERS

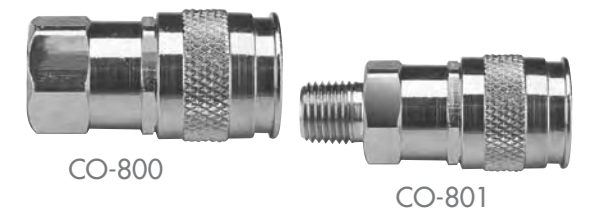
HALTEC NO.	DESCRIPTION	NPT	THREAD TYPE	SCHRADER	DILL	AMFLO	CAMEL	MILTON	TRU-FLATE
CO-800	Coupler	1/4" - 18 NPTF	Female	-	-	C60	61-240	-	-
CO-801	Coupler	1/4" - 18 NPTF	Male	-	-	C61	61-241	-	-

FEATURES:

- The 1/4" universal coupler will accept the industrial interchange [(MIL-C4109) and (ANSI/(NFPA) T3.20.14-1990)] Tru-Flate and the ARO style nipples.
- The coupler features automatic push-to-connect operation, high flow machined "window valve," corrosion-resistant, solid-brass construction and

a sleeve guard which helps prevent accidental disconnects and protects the sleeve from damage.

- While the best quick-coupling performance is obtained by matching like series couplers and nipples, the universal coupler permits multiple series nipples to mate with one coupler.



COUPLERS & NIPPLES

ACCESSORIES PRODUCTS BULLETIN
Introducing Great NEW Products!



ALC-16P



ALC-13S



ALC-22C

ALC-PDQ-16



- ALC-13S = SEALANT
- ALC-22C = CLEANER
- ALC-16P = HEAVY DUTY POLISH (PASTE)
- ALC-PDQ-16 = PDQ POLISH
- ALC-KIT = INCLUDES CLEANER, HEAVY DUTY POLISH & SEALANT

ALCOA ALUMINUM CARE SYSTEM

The Alcoa Aluminum Care System can make certain even the dirtiest and heavily oxidized aluminum shines like new. Alcoa cleaning products work as easy as 1, 2, 3! Our three-step process provides a total cleaning solution for aluminum that's been neglected and needs a little TLC.

- STEP 1** Spray Gel cleaner: Prepare your wheel to polish! Removes brake dust, oxidation and water spots.
- STEP 2** Heavy Duty Polish: Buffing recommended for a smooth, consistent appearance.
- STEP 3** Sealant: The key to making your polished aluminum last six times longer! Spray on and rinse off.

PDQ: Combines the power of the Alcoa 1, 2, 3 system. A one-step process to keep your wheels looking like new. Works on all uncoated aluminum. One 16-oz. bottle will clean 10-12 wheels. No other polish in the marketplace provides the sealant in the properties of the formula.

Alcoa Dura-Bright® wheels with XBR™ Technology do not require these products. Clean with just soap and water.

Safe to use on all uncoated aluminum surfaces.

ALCOA'S NEW HUB COVER SYSTEMS:
THEY'RE ONE-PIECE WONDERS!

Fits wheels 19.5", 22.5" and 24.5", Hub pilot, 33 mm hex flange nut with 10 x 285 mm

Alcoa's new hub cover system provides an easy way to upgrade the appearance of new and older trucks.

This quality-tested, road-proven hub cover system is built to the precise specifications you would expect from Alcoa, the world leader in heavy-duty wheels.

- This unique, one-piece design provides:
- Reduced installation time with 1 part vs. 11
 - Highly reflective superior finish
 - Patented on-off attachment design
 - On-off removal for DOT inspection
 - 2-year warranty



086100S



087100S

AXLE END COVERS

(All closed-end axle covers are supplied with an Alcoa Medallion)

- For use on 16 x 7 aluminum wheels
- Includes rubber O-rings

- All-aluminum
- Made in the U.S.A.

* Mounts from the front



H-1611*
Height: 1.125" straight.
For Dodge/Ford dually applications
Bolt pattern: 8 x 6.50
Hub bores: 4.88"



H-1612*
Height: 4.750" straight.
For Dodge/Ford dually applications
Bolt pattern: 8 x 6.50
Hub bores: 4.88"



H-1681*
Height: 4.750" straight.
w/3.50" open end. For Dodge/Ford dually applications. Bolt pattern: 8 x 6.50. Hub bores: 4.88"



H-2167
Height: 5.875" straight.
Hub bores: 5.150"
Bolt pattern: 8 x 6.50



H-3167
Height: 4.700" straight.
Hub bores: 5.150"
Bolt pattern: 8 x 6.50



H-3267
Height: 2.000" straight.
Hub bores: 5.150"
Bolt pattern: 8 x 6.50



H-3611*
Height: 1.125" straight. For Chevy dually apps. Bolt pattern: 8 x 6.50. Hub bores: 4.88"



H-3612*
Height: 4.750" straight. For Chevy dually apps. Bolt pattern: 8 x 6.50. Hub bores: 4.88"



H-4167
Height: 4.000" straight.
Hub bores: 5.150"
Bolt pattern: 8 x 6.50



H-5167
Height: 4.150" straight.
Hub bores: 4.250"
Bolt patterns: 5 x 5.50 & 8 x 6.50



H-5267
Height: 2.000" straight.
Hub bores: 4.250"
Bolt patterns: 5 x 5.50 & 8 x 6.50



H-6167
Height: 4.000" straight with 3.750" open end
Hub bores: 4.250". Bolt patterns: 5 x 5.50 & 6 x 5.50



H-7167
Height: 4.000" bullet shape. Hube bores: 4.250". Bolt patterns: 5 x 5.50 & 6 x 5.50



H-8167
Height: 4.650" straight with 4.500" open end
Hub bores: 5.150"
Bolt pattern: 8 x 6.50



H-9167
Height: 3.094" straight
Hub bore: 3.295". Bolt patterns: 5 x 4.50, 5 x 4.75, 5 x 5.00 & 6 x 4.50



H-9267
Height: 2.00" straight
Hub bore: 3.295"
Bolt patterns: 5 x 4.50, 5 x 4.75, 5 x 5.50 & 6 x 5.50



H-11167
Height: 3.688" straight with 2.193" open end
Hub bore: 3.295". Bolt patterns: 5 x 4.50, 5 x 4.75, 5 x 5.00 & 6 x 4.50



H-11911*
Height: 1.500" straight
Hub bores: 5.250" & 5.460"
Bolt pattern: 10 x 7.25



H-11912*
Height: 5.375" straight
Hub bores: 5.250" & 5.460"
Bolt pattern: 10 x 7.25

ALCOA

ALCOA MOUNTING HARDWARE 60° CONE SEAT CAP NUT

Each lug nut has specific inner threads for each application with universal outside threads to accept the Alcoa chrome plated nut cover (See H-78 & H-79)



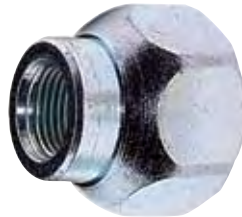
5996R/5996L

1-1/8" x 16 Cap Nut
Mounts standard single wheels and wide base wheels to 1-1/8" studs and provides additional 1/8" hex height. Also mounts outer dual wheel to 1-1/8" inner cap nut.



5995R/5995L

3/4" x 16 Cap Nut Mounts standard single wheels and wide base wheels to 3/4" studs.



2-PIECE FLANGE LUG NUTS OR ALCOA SINGLE & DUAL HUB-PILOT WHEELS



HALTEC NO.	DESCRIPTION	TORQUE
2 piece flange lug nuts (for hub pilot 16 x 6 wheels and some 19.5" RV wheels)		
139698	M14 x 1.5, 1 1/8" hex	130-150 ft. lbs.
139987	9/16" x 18, 1 1/8" hex	130-150 ft. lbs.
39946	5/8" x 18, 1 1/16" hex	140-160 ft. lbs.
39913	M14x2.0, 1/16" hex	130-150 ft. lbs.



39874 - FLANGE NUT

Two-piece, 33mm hex, M22 x1.5mm, RH thread flange nut. Mounts single and dual wheels to wheel centering hubs. Right hand threads used both sides of vehicle. Single wheels require 2" (50.8mm) stud standout. Dual wheels require 2-13/16" stud standout.



430632 - CAP NUT

Two-piece, 33mm hex, M22 x1.5mm, RH thread, sleeved cap nut. Mounts single aluminum wheels, with 32mm bolt holes, to wheel centering hubs with stud standouts less than 1.92" (48.75mm). Right-hand threads used on both sides of vehicle.



430732 - CAP NUT

Two-piece, 33mm hex, M22 x1.5mm, RH thread, sleeved cap nut. Mounts dual aluminum wheels, with 32mm bolt holes, to wheel centering hubs with stud standouts less than 2.85" (72mm). Right hand threads used on both sides of vehicle.

16" X 7" 1 PC. LUG NUT FOR ALCOA SINGLE STUD PILOT WHEELS

HALTEC NO.	DESCRIPTION	HEX	TORQUE
5012	M12 x 1.5	7/8"	80-90 ft. lbs.
5014	M14 x 1.5	7/8"	100-110 ft. lbs.
5120	1/2 x 20	7/8"	90-100 ft. lbs.
5716	7/16 x 20	7/8"	90-100 ft. lbs.
5916	9/16 x 18	7/8"	120-140 ft. lbs.



5988R/5988L INNER CAP NUT

For use with standard length studs (1.31" to 1.44" stud standout) or longer studs not to exceed 1.88" stud standout. Full external threads, counter bore 5/16" deep at open end. For use with aluminum inner and outer wheels. Prevents stud from bottoming out in cap nut.



7896R/7896L INNER CAP NUT

Inner thread 3/4" x 16, outer thread 1-1/8" x 16. For use with steel inner dual wheel and aluminum outer dual wheel with 1.31" to 1.44" stud standout.

Patented spring-clip insert holds cover tight to the nut, yet permits easy installation and removal. Available for ball seal cap nuts for stud located wheels and the new Alcoa Hug-A-Lug® nut cover for the two-piece flange nut for hub-piloted wheels. Now Alcoa Hug-A-Lug nut covers come in handy cardboard display container for easy retail display. The versatile design of the 10-pack nut covers allows it to stand alone or hang on a display rack.

NOTE: Orders are accepted for less than case quantities.

H-1503

10 H-150 Hug-A-Lugs in a cardboard display container. Versatile 10-pack design.



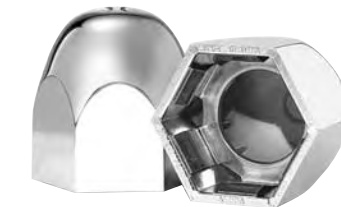
H-1813

10 H-181 Hug-A-Lugs in a cardboard display container. Versatile 10-pack design.



FOR 1 1/2" HEX STUD-PILOT WHEELS

HALTEC NO.	DESCRIPTION	CASE QTY.	FINISH
H-150	For 1 1/2" Hex Stud-pilot Nut	200	Chrome



FOR 33MM HEX FLANGE NUTS (HUB-PILOT WHEELS)

HALTEC NO.	DESCRIPTION	FOR HEIGHTS	CASE QTY.	FINISH
H-180	For 33mm Hex Flange Nut for buses	.886"-1.0"	200	Chrome
H-181	For 33mm Hex Flange Nut for buses	27-31mm	200	Chrome



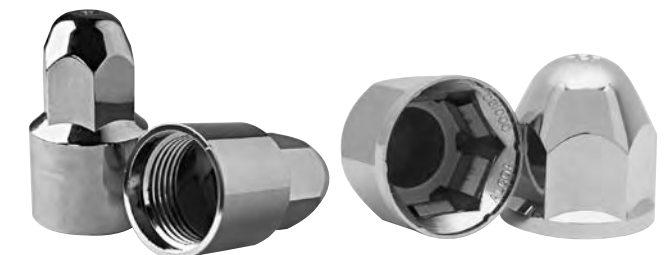
FOR 1 1/2" HEX NUTS (HUB-PILOT WHEELS)

HALTEC NO.	DESCRIPTION	FOR HEIGHTS	CASE QTY.	FINISH
H-182	For 1 1/2" Hex Flange Nut for trucks	1 7/16"	200	Chrome
H-183	For 1 1/2" Hex Flange Nut for buses	7/8"	200	Chrome



FOR ALCOA LUG NUTS FOR 16" & 19" WHEELS

HALTC NO.	DESCRIPTION	FOR HEIGHTS	CASE QTY.	FINISH
H-78	2.125"	.96"	100	Chrome
H-79	1.525" Tall	.96"	100	Chrome
H-190	Hug-A-Lug Push-On	Fits 1 1/16" nuts	200	Chrome



ALCOA

FRONT STEER WHEEL HUB COVER KITS FOR 10-HOLE 22.5" & 24.5" WHEELS



WHEEL HUB COVER KITS FOR 10-HOLE 22.5" & 24.5" WHEELS

HALTEC NO.	WHEEL TYPE	NUT COVER	APPLICATION/PACKAGE
076185*	Hub Piloted	H-185 (33mm)	Cover is secured by screwing the H-185 directly onto stud threads; Box
076155	Ball-Seat	H-155 (1 1/2")	Cover is secured by screwing the H-155 onto inner clamp. Inner clamp is placed on stud threads; Box
076188	Hub Piloted	H-188 (33mm)	Cover is secured by screwing the H-188 onto inner clamp. Inner clamp is placed on stud threads; Box
076085*	Hub Piloted	H-185 (33mm)	Cover is secured by screwing the H-185 directly onto stud threads; Reusable Bin includes 20 nut covers, 2 hub covers & tool
076015	Ball-Seat	H-155 (1 1/2")	Cover is secured by screwing the H-155 onto inner clamp. Inner clamp is placed on stud threads; Reusable Bin includes 20 nut covers, 20 inner clamps, 2 hub covers & tool
076018	Hub Piloted	H-188 (33mm)	Cover is secured by screwing the H-188 onto inner clamp. Inner clamp is placed on stud threads; Reusable Bin includes 20 nut covers, 20 inner clamps, 2 hub covers & tool

*Requires a minimum of four threads per stud.



H-155
1 1/2" nut cover with an inner clamp and threaded outer cover. To order inner clamp only, ask for Part # H-155C.



500
Installation tool for hub cover systems 076155 and 077155.

REAR DRIVE WHEEL COVER KITS FOR 10-HOLE 22.5" & 24.5" WHEELS



REAR DRIVE WHEEL COVER KITS FOR 10 HOLE 22.5" & 24.5" WHEELS

HALTEC NO.	WHEEL TYPE	NUT COVER	APPLICATION
077185*	Hub Pilot	H-185 (33mm)	Cover is secured by screwing the H-185 directly onto stud threads; Box
077155	Stud Pilot	H-155 (1 1/2")	Cover is secured by screwing the H-155 onto inner clamp. Inner clamp is placed on stud threads; Box
077188	Hub Pilot	H-188 (33mm)	Cover is secured by screwing the H-188 onto inner clamp. Inner clamp is placed on stud threads; Box
077085*	Hub Pilot	H-185 (33mm)	Cover is secured by screwing the H-185 directly onto stud threads; Reusable Bin includes 40 nut covers, 4 hub covers & tool
077015	Stud Pilot	H-155 (1 1/2")	Cover is secured by screwing the H-155 onto inner clamp. Inner clamp is placed on stud threads; Reusable Bin includes 40 nut covers, 40 inner clamps, 4 hub covers & tool
077018	Hub Pilot	H-188 (33mm)	Cover is secured by screwing the H-188 onto inner clamp. Inner clamp is placed on stud threads; Reusable Bin includes 40 nut covers, 40 inner clamps, 4 hub covers & tool

*Requires a minimum of four threads per stud.



H-185*
33mm screw-on nut cover for hub covers 076185 and 077185.



H-188
33mm nut cover with an inner clamp threaded out cover. To order inner clamp only, ask for Part# H-188C.



600
Installation tool for hub cover systems 076185, 077185, 076188 and 077188.

* Requires a minimum of 4 threads per stud.
• To order Hub Cover Systems in standard cardboard box packaging add a "B" to the end of the part number. Example 077185B

ALCOA



001102



001103

LIGHT DUTY TRUCKS

HALTEC NO.	WHEEL SIZE	BOLT CIRCLE	PACKAGE INCLUDES
001102	19.5" x 6" Hub Pilot	8 x 225mm	1 Front
001103	19.5" x 6" Hub Pilot	8 x 225mm	1 Rear
110203	19.5" x 6" Hub Pilot	8 x 225mm	2 Fronts - 2 Rears
100450	19.5 x 6" Hub Pilot	10 x 225 mm	2-Front covers, 2-Rear covers
001004	19.5 x 6" Hub Pilot	10 x 225 mm	1-Front cover
001005	19.5 x 6" Hub Pilot	10 x 225 mm	1-Rear cover

Application: Snaps on over lugnuts and center hub.



008221



008222

TRUCKS, BUSES AND TRAILERS

HALTEC NO.	DESCRIPTION	BOLT CIRCLE	KIT INCLUDES
082012	Kit for 30mm hex flange nuts (includes fronts and rears)	8 x 275mm	2-008221, 2-008222, 32-H-20
082122	Front hub cover kit for 33mm hex flange nuts; steers	8 x 275mm	2-008221, 16 H-22
082133	Rear hub cover kit for 33mm hex flange nuts; drivers	8 x 275mm	2-008222, 16 H-22
008201	Front Hub Cover for 30mm hex flange nuts	8 x 275mm	1 Front Hub Cover & 8 lug nut covers (H-20)
008202	Rear Hub Cover for 30mm hex flange nuts	8 x 275mm	1 Rear Hub Cover & 8 lug nut covers (H-20)
008221	Front Hub Cover for 33mm hex flange nuts	8 x 275mm	1 Front Hub Cover & 8 lug nut covers (H-22)
008222	Rear Hub Cover for 33mm hex flange nuts	8 x 275mm	1 Rear Hub Cover & 8 lug nut covers (H-22)
140230B	Front hub cover kit for 30mm hex flange nuts	8 x 275 mm	2-001402, 16-000230
109176B	Rear hub cover kit for 30mm hex flange nuts	8 x 275 mm	2-001109, 16-000230
140233A	Front hub cover kit for 33mm hex flange nuts	8 x 275 mm	2-001402, 16-000233
109176A	Rear hub cover kit for 33mm hex flange nuts	8 x 275 mm	2-001109, 16-000233
001402	Front hub cover for 30mm and 33mm	8 x 275 mm	1-Front cover
001109	Rear hub cover for 30mm and 33mm	8 x 275 mm	1-Rear cover, 1-knob, 1-bracket
000230	Lug nut cover for 30mm hex flange nuts	8 x 275 mm	1-Lug nut cover
000233	Lug nut cover for 33mm hex flange nuts	8 x 275 mm	1-Lug nut cover
001763	Knob for rear hub cover	8 x 275 mm	1-Knob
001834	Bracket for rear hub cover	8 x 275 mm	1-Bracket



Application: Place cover over hub and secure with nut cover.



H-20

For 30mm hex flange nuts. *Requires minimum 3 threads protruding through lug nut; Black spacer not applicable w/short lug nut.



H-22

For 33mm hex flange nuts. *Requires minimum 3 threads protruding through lug nut; Black spacer not applicable with short lug nut.



BBH-10 "COMBI" BEAD BREAKER

The BBH-10 is ideal for use with all truck, farm tractor, grader, combine and skidder tires. The air hydraulic movement works on all types of rims except 5-piece earthmover rims. Can be used without removing the wheel and will not damage the bead or rim. No screws, bolts or attachments. Can be used with Haltec model AHP-20 pump, AHP-15 pump or equivalent 10,000 psi pump.



TALON-1 OTR BEAD BREAKER

- Works on both front and back wheel without dismounting wheel from vehicle
- Works on all new 3 piece 25" wheels or larger
- Works on all wheels with CAT "Shur-Lok" safety feature
- A must tool for all trucks



OTR-1825 BEAD BREAKER

Off-the road bead breaker tool. Used on 25" to 51" 5-piece rims with pry bar pockets. Has 4 1/4" stroke and is designed to break earthmover tire beads on rusted rims. Can be used with Haltec model AHP-15 pump or equivalent 10,000 psi pump, 17" length. Caterpillar conversion kit available. Order part OTR-1825CK.



OTR-2000 GIANT TIRE/WHEEL BEAD BREAKING TOOL

Designed for largest construction and off-road tires and wheels. Works on all 39", 45", 51" and 57" wheel sizes.

Can be used with Haltec model AHP-20 pump, AHP-15 pump or equivalent 10,000 psi pump. Note: Due to design changes, the OTR-2000 frame and ram will not interchange with Goodyear TO-2000 tools. All other parts are interchangeable.



AHP-15 HYDRAULIC PUMP

- Fast-acting air hydraulic pump that can be used with all Haltec Bead Breakers
- 10,000 psi rated
- Capacity 3.5 qts.
- Oil Hose not included
- Polyglass reservoir

AHP-20 HYDRAULIC PUMP

- Fast-acting air hydraulic pump that can be used with all Haltec Bead Breakers
- 10,000 psi rated
- Capacity 5 qts. oil
- Hose not included
- Polyglass reservoir



AHP-20H

- 8 foot hose with coupler for use on all hydraulic pumps.

BEAD BREAKERS

SAFETY!

THESE PRODUCTS, AS WELL AS ALL TIRE TOOLS, SHOULD NEVER BE USED BY PERSONS UNLESS THEY HAVE BEEN TRAINED PROPERLY ACCORDING TO O.S.H.A. REGULATION #29CFR 1910.177 ENTITLED "SERVICING SINGLE-PIECE & MULTI-PIECE RIM WHEELS."



These rams are recommended for use in pushing off-rear beads on earthmover wheels. Can be used for all earthmover truck tires. Can also be used as a general purpose cylinder. Maximum operating pressure of 10,000 psi. Designed for use in all positions. Made in USA. A coupler and dust cap are included with all models.

HYDRAULIC RAMS & JACKS

HALTEC NO.	CYLINDER CAPACITY (TONS)	STROKE (INCHES)	CYLINDER EFFECTIVE AREA (IN ²)	OIL CAPACITY (IN ³)	COLLAPSED HEIGHT (IN)	WEIGHT (LBS.)
AJ-102	10	2.13	2.23	4.75	4.78	5.1
AJ-106	10	6.13	2.23	13.67	9.75	9.4
AJ-110	10	10.13	2.23	22.59	13.75	12.9
AJ-30	30	2.44	6.5	15.85	4.5	13.8
AJ-506	50	6	11.05	66.3	10.97	31.5
AJ-1006	100	6	20.65	136.91	14.06	45

AJ-30

The AJ-30 "shorty" is a light-weight, low-profile design for use in confined places. Cylinder capacity is 30 tons.

AJ-506-B

The AJ-506B 50-ton aluminum jack is easy-to-handle and light-weight, it can be used with any 10,000 psi pump. Perfect for off-highway work. Comes with a 7" x 7" aluminum base.

AJ-506AB

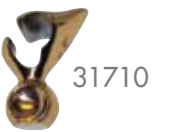
7" x 7" aluminum base for use with the AJ-506.



HYDRAULIC RAMS & JACKS

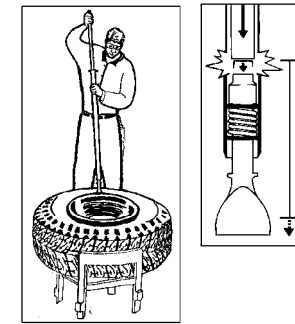
31710 BEAD HOLDING DEVICE

Holds the bead in place against the wheel when mounting the tire onto the wheel. Not a prying device.



IMPACT BEAD BREAKERS

Bead breaker loosens beads with bead-breaking foot and ram bar, but never cuts the bead of the tire. The wedge foot is forced between the bead and rim flange. Breaker is designed for shop or road use. No other bead breaker tools are necessary.



IMPACT BEAD BREAKERS

PART NO.	EDP NO.	DESCRIPTION	LENGTH	LENGTH EXTENDED	HEAD WEIGHT
T26B	35926	Heavy-duty	50" (127.0cm)	80" (203.2cm)	24 lbs. (10.9kg)



HANDLED BEAD-BREAKING WEDGES

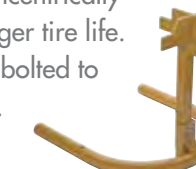
Use on passenger, truck, bus, farm, tractor and aircraft tires. Use with soft-face hammers. Breaks beads quickly and easily. Handle serves as lever to push bead away from rim.

WEDGES

PART NO.	EDP NO.	DESCRIPTION	REPLACEMENT HANDLE	LENGTH	HEAD WEIGHT
T11E®	35329	Wood-Handled Wedge	T11EH	30" (76.2cm)	8 1/2 lbs. (3.9kg)
TG11E	35429	Fiberglass Handled Wedge	TG11EH	32" (81.3cm)	8 1/2 lbs. (3.9kg)
TG11D	35427	Fiberglass Handled Wedge	TG11DH	18" (46cm)	4.8 lbs (2.2kg)

EASY-LIFT™ BEAD SEATING STAND

Reduces back strain while handling 22.5" tire and wheel assemblies. Aligns beads concentrically on wheel for improved ride and longer tire life. Portable for field service, or can be bolted to the floor. Made of high-grade steel. Length: 24" high x 26" wide x 27" long. U.S. Patent No. 7,225,849.



EASY-LIFT™ BEAD SEATING STAND

MODEL	DESCRIPTION	WEIGHT
36016	Standard Crown for 8-3/4" diameter hubs	36 lbs. (16.4 kg)
36017	Large Crown for 11" Euro hubs	37 lbs. (16.8 kg)

T26A (32126) BEAD-BREAKING TOOL/DRIVING IRON

Driving iron is used for loosening rusted truck and bus beads. Tool blade is forged extra wide and curved to fit the rim. Will speed truck repair work and save labor time.



BEAD-BREAKING TOOL/DRIVING IRON

LENGTH	STOCK	WEIGHT
11 3/4" (29.9cm)	1 1/4" (32mm)	3 3/4 lbs. (1.7kg)

BEAD-BREAKING TOOLS TRUCK/FARM/OTR

These lightweight, portable tools are a great alternative to the handled bead breaking wedges or hydraulic bead breakers. One end is used to remove frozen or rusted beads from all types of rims. The other end can be used as a leverage bar when inserted into the 35695 or 35697 Truck Wrench.



BEAD-BREAKING TOOLS TRUCK/FARM/OTR

PART #	EDP #	DESCRIPTION	LENGTH	STOCK	WEIGHT
T41	33341	Swan Neck	30" (76.2cm)	7/8" (22mm)	5 1/2 lbs. (2.5kg)
T42	33342	30" Bead Breaker	30" (76.2cm)	7/8" (22mm)	4 3/4 lbs. (2.2kg)
T52	34652	Bead Breaker Leverage Bar	33" (83.8cm)	7/8" (22mm)	5 1/2" lbs. (2.5kg)

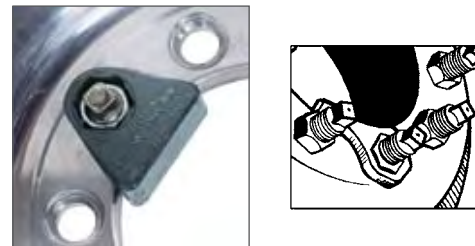
KENTOOL

BUDD NUT WRENCHES

Wrenches hold outer cap nut on dual wheels while turning inner nut. Lip fits in hole to secure wrench in place. Sizes offered fit standard and metric Budd nuts.

BUDD NUT WRENCHES

PART NO.	EDP NO.	DESCRIPTION	SIZE	WEIGHT
TX-9®	30609	SAE	1 1/2" (38mm)	.73 lbs (.3kg)



TX-9®

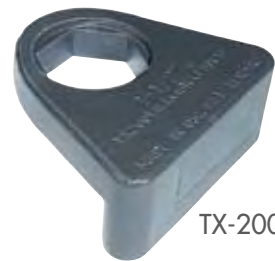
TX-241

HEAVY-DUTY CAP NUT WRENCHES

Heavy-duty design will not slip out of position. Wrench rests snugly against the center hole, reducing the possibility of rim damage. Ideal for aluminum wheels. Patent D446, 429.

HEAVY-DUTY CAP NUT WRENCHES

PART NO.	EDP NO.	DESCRIPTION	SIZE	WEIGHT
TX-200	30618	SAE	1-1/2"	2.6 lbs (1.2kg)
TX-241	30619	Metric	41mm	2.6 lbs (1.2kg)



TX-200

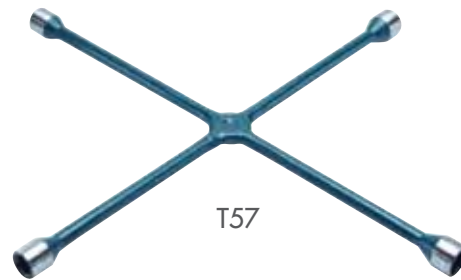
LUG WRENCHES:

PROFESSIONAL LUG WRENCH:

America's premier professional lug wrench for cars, light trucks, SUV's, RV's and vans. Drop forged centers for extra strength. Keep in trunk for emergencies or everyday use.

PROFESSIONAL LUG WRENCH

MODEL	EDP NO.	DESCRIPTION	SOCKET SIZES	LENGTH	STOCK	WEIGHT
T57	35657	Passenger	3/4", 13/16", 7/8", 15/16"	23" (58cm)	5/8" (16mm)	4.5 lbs. (2kg)



T57

STANDARD LUG WRENCHES:

Welded center construction for strength and durability. Premium grade, special bar quality steel for extra strength.

STANDARD LUG WRENCHES

MODEL	EDP NO.	DESCRIPTION	SOCKET SIZES	LENGTH	STOCK	WEIGHT
T59	35659	Passenger	3/4", 13/16", 7/8", 15/16"	22" (56cm)	5/8" (16mm)	4.2 lbs. (1.9kg)
T90	35690	Light Truck	7/8" deep well, 15/16", 1", 1-1/16"	25" (64cm)	3/4" (19mm)	7.2 lbs. (3.2kg)



T59

HEAVY-DUTY TRUCK LUG WRENCH

MODEL	EDP NO.	DESCRIPTION	U.S.A. SOCKET SIZES	LENGTH	STOCK	WEIGHT
TM95 Metric	35795	H.D. Truck	24, 27, 30, 33mm	27-1/2" (70cm)	1" (25mm)	13.5 lbs. (6.1kg)
T95	35695	SAE	1 1/6, 1 1/4, 1 1/2, 13/16" Square	27 1/2" (69.9cm)	1" (25mm)	13 1/2 lbs. (6.1 kg)
TC95	35595	SAE and Metric	1 1/2, 13/16" Square, 30, 33 mm	27 1/2" (69.9cm)	1" (25mm)	14.2 lbs. (6.4 kg)



T95

Use on heavy-duty trucks, buses, and tractors. Drop forged center provides strength and durability. Wrench has center hole for a leverage bar.

ECONOMY LUG WRENCHES (SAE/METRIC)

MODEL	EDP NO.	DESCRIPTION	U.S.A. SOCKET SIZES	LENGTH	STOCK	WEIGHT
T9520	35620	Passenger	3/4", 13/16", 7/8", 17mm	20" (51cm)	9/16" (14mm)	3.4 lbs. (1.5kg)
T61	35661	Passenger	3/4", 13/16", 7/8", 17mm	22" (56cm)	9/16" (14mm)	3.8 lbs. (1.7kg)
T62	35662	Passenger	3/4", 13/16", 7/8", 17mm	18" (46cm)	9/16" (14mm)	3.2 lbs. (1.5kg)



T9520

TUBELESS TIRE IRONS & SETS

Sets provide all irons necessary for a variety of tire changing applications. Use "C" bar with the "B" extension bar for easier use on large, widebase truck tires. Use on standard and large truck tires, including industrial, farm, buses and tractors.



TUBELESS TIRE IRONS & SETS STANDARD

PART NO.	EDP NO.	DESCRIPTION	LENGTH	STOCK	WEIGHT
T46A	34747	Straight Mount/ Demount Tool	36" (91.4cm)	3/4" (19cm)	4 1/2 lbs. (2.0kg)



TUBELESS TIRE IRONS & SETS

PART NO.	EDP NO.	LENGTH	SOCKET SIZES	WEIGHT
T45A®	34645	37" (94.0cm)	3/4" (19mm)	4 1/2 lbs. (2.0kg)
T45HD	34647	41" (104.1cm)	7/8" (22mm)	7 lbs. (3.2kg)
T47A-2000K™	34644	38" (96 cm)	7/8" (22mm)	5 lbs. (2.2kg)



TUBELESS TIRE IRONS & SETS HEAVY-DUTY

PART NO.	EDP NO.	DESCRIPTION	LENGTH	STOCK	WEIGHT
T47A	34847	Straight Mount/ Demount Tool	52" (132.1cm)	1" (25cm)	11 lbs. (5.0kg)

KENTOOL

30165 DUAL WHEEL LUG STUD REMOVER

Special self-tapping splines provide maximum grip to remove stripped lug studs. Use with TR1, TR98 truck wrenches. Can also be used with open end wrench. Limited use. Use with soft-faced hammer. Weight: 1 lb. (.5kg) Fits 1 3/16" inner nut.



DOUBLE-END TRUCK WRENCHES

Use on trucks, buses, farm and off-road vehicles. Great for on-the-road service. Sizes available for all SAE and metric lug nuts. All wrenches are constructed from 1" alloy steel for long-lasting strength. Wrenches have an extra deep 1 1/2" socket. Use TR5 truck wrench handle or 3/4" hex leverage bars. Length: 16". Made in USA.



TR1

SAE

PART NO.	EDP NO.	SOCKET SIZES	WEIGHT
TR1	32501	1 1/8" Hex with 13/16" Square x 1 1/2" Hex	4 1/2 lbs. (2.0 kg)
TR2	32502	1" Hex with 5/8" Square x 1 1/4" Hex	4 1/2 lbs. (2.0 kg)
TR3	32503	7/8" Hex X 1 1/16" Hex	4 1/2 lbs. (2.0 kg)
TR3A	32505	1 1/16" Hex X 1 1/8" Hex	4 1/2 lbs. (2.0 kg)
TR3X	32506	1 1/16" Square X 1 3/16" Square	4 1/2 lbs. (2.0 kg)
TR98	32508	1 1/2" Hex X 13/16" Square	4 1/2 lbs. (2.0 kg)
TR9	32509	1 1/4" Hex X 1 1/16" Hex	4 1/2 lbs. (2.0 kg)

METRIC

PART NO.	EDP NO.	SOCKET SIZES	WEIGHT
TRM1	32551	17 mm Square X 35 mm	4 1/2 lbs. (2.0 kg)
TRM2	32552	24 mm X 33 mm	4 1/2 lbs. (2.0 kg)
TRM3	32553	27 mm X 30 mm	4 1/2 lbs. (2.0 kg)
TRM6	32556	21 mm X 41 mm	4 1/2 lbs. (2.0 kg)
TRM7	32557	30 mm X 33 mm	4 1/2 lbs. (2.0 kg)

TRUCK WRENCH

Use for off-the-road Budd type wheels. Use TR11 handle. Stock 1 1/4".

HEAVY-DUTY TRUCK WRENCH

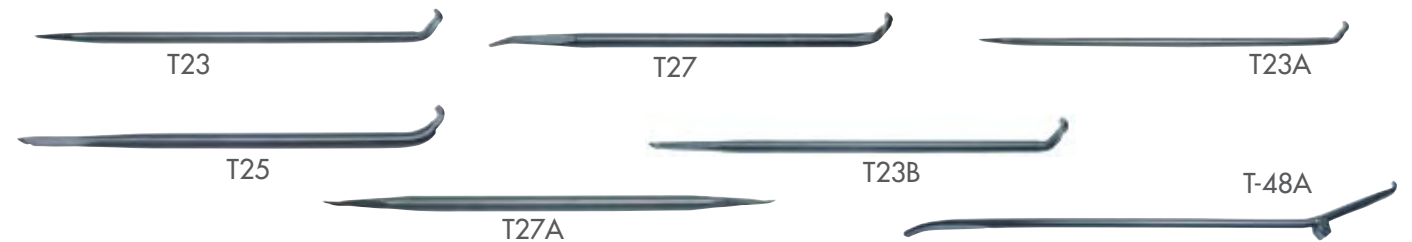
PART NO.	EDP NO.	LENGTH	SOCKET SIZES	WEIGHT
TR10	34401	29 1/2" (74.9 cm)	1 3/4" Hex and 15/16" Square	12 1/2 lbs. (5.7 kg)
TR11	34402	60"	1" round	6 1/2 lbs.



TR10

LOCK RING TOOLS

These tools are designed to remove lock rings on most trucks on the road today. A must have for anyone mounting or demounting multi-piece rims.



LOCK RING TOOLS

PART NO.	EDP NO.	DESCRIPTION	LENGTH	STOCK	WEIGHT
T23	32123	Truck Lock Ring Remover Designed especially for Firestone RH and TI rims	24" (61cm)	11/16" (17.5cm)	2 1/4 lbs. (1.0kg)
T23A	33223	Truck Lock Ring Remover Designed Especially for Firestone RH And RI rims	30" (76.2cm)	11/16" (17.5cm)	2 1/2 lbs. (1.1kg)
T23B	33224	Combination Rim/Ring Tool Flat, tapered end ideal for all round ring & rim work	23 1/2" (59.7cm)	11/16" (17.5cm)	2 1/2 lbs. (1.1kg)
T25	32125	5" Rim Lock Tool For Servicing 5" wide base rims	18" (45.7cm)	5/8" (16cm)	1 3/4 lbs. (.8kg)
T27	32127	Special Lock Ring Tool Long, tapered curved end for R-1 continuous side rings; short curved end for Goodyear rims	18" (45.7cm)	5/8" (16cm)	1 3/4 lbs. (.8kg)
T27A	32128	Lock Ring Tool Remove continuous side rings on two-piece truck rims	18" (45.7cm)	5/8" (16cm)	1 3/4 lbs. (.8kg)
T48A	34648	Heavy-duty lock ring tool used for multi-piece wheels, especially hub types	37" (94cm)	3/4" (19mm)	4 1/2 lbs. (2.0 kg)

TIRE INFLATION CAGES

Mandatory for any shop working with tubeless and multi-piece rims. Made from heavy-gauge steel tubing welded to a steel base. Guards against blown lock rings and rims. Follow safety instructions on cage and OSHA regulation 29-CFR Part 1910.177. Meets OSHA regulation requirements for Medium, Heavy-Duty Truck, OTR, Tractor and Super Singles. Ken-Tool offers a size and design for all your needs. For additional safety instructions, call Haltec customer service.



SAFETY! WARNING: SAFETY CAGES - TIRE CHANGING CAN BE DANGEROUS AND SHOULD BE DONE BY TRAINED PERSONNEL USING PROPER TOOLS AND EQUIPMENT AS DIRECTED BY FEDERAL OSHA STANDARD NO. 29CFR PART 1910.177. TIRES MAY EXPLODE DURING INFLATION CAUSING INJURY TO OPERATOR OR BYSTANDER. WEAR SAFETY GOGGLES. KEEP ALL PARTS OF BODY OUTSIDE CAGE. USE EXTENSION HOSE, CLIP-ON CHUCK AND REMOTE VALVE. SEE SUPERVISOR FOR SAFETY PROCEDURES.

TIRE INFLATION CAGES

PART NO.	EDP NO.	DESCRIPTION	A HEIGHT	B WIDTH	BASE	WEIGHT
T102	36002	4-Bar Cage*	43 1/2" (110.5cm)	20 1/2" (52.1cm)	31 1/2 x 26" (80 x 66.0cm)	152 lbs. (69.0kg)
T105	36005	5-Bar Cage*	43 1/2" (110.5cm)	20 1/2" (52.1cm)	41 x 26" (104.1 x 66.0cm)	192 lbs. (87.2kg)
T101	36001	Portable 2-Bar Cage	41" (104cm)	16" (41cm)	7" closed x 21 1/2"	60 lbs. (27.2kg)
T104	36004	3-Bar Cage - OTR	65" (165cm)	24" (61cm)	30" x 27" (76cm x 69cm)	158 lbs. (72.6kg)

31810 ALUMINUM WHEEL PROTECTOR

Save expensive rims from damage during manual changing. Prevents tire tools from marring or scratching aluminum or steel rims when using Ken-Tool's manual tire changing tools. Durable leather protector fits on rim and protects inside of the rim well.



KENTOOL

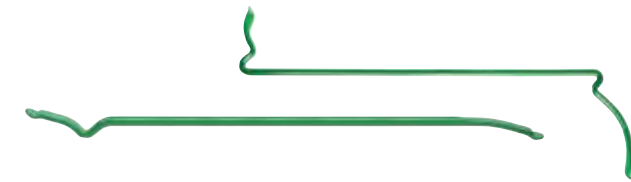
MOUNTING/DEMOUNTING:

T2001 SERPENT™ DEMOUNT TOOL

Demounts both beads on most truck tires without the need for lifting the tire/wheel assembly off the ground, and then dropping it.

T2002 SERPENT™ MOUNTING TOOL

Wing shape is designed to stop against the rim, and then remove itself effortlessly from between the rim and bead. The small end of the tool easily gets under the stretched bead for that last pull.



SERPENT

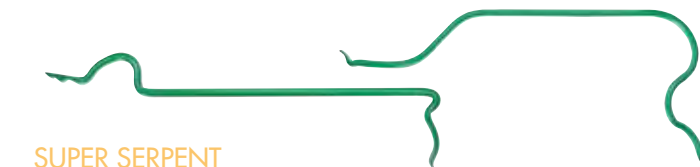
PART NO.	EDP NO.	LENGTH	SOCKET SIZES	WEIGHT
T2001	35449	39" (99 cm)	3/4" (19mm)	6.5 lbs. (3.0kg)
T2002	35450	38" (96 cm)	11/16" (17.5mm)	4 lbs. (1.8kg)

T2005 – SUPER SERPENT™ MOUNT TOOL

This mount tool for super singles only weighs about 6-1/2 lbs. It may seem "funny-looking", but every inch of this innovative design is purely serious. It makes interference of the second bead, while mounting the first, a thing of the past, and delivers twice the leverage of any "straight-type" tire-mounting tool. It even has the small end that easily gets under the bead for that "last pull".

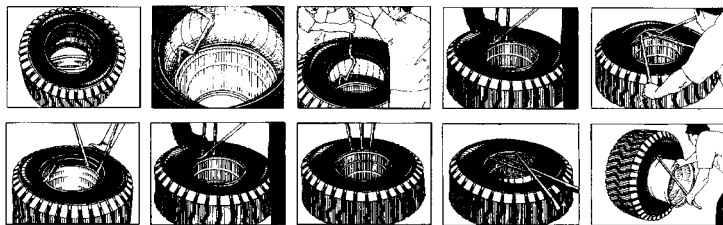
T2006 – SUPER SERPENT™ DEMOUNT TOOL

Weighing in at only 5-1/2 lbs, this unique, lightweight demount tool for super singles can be lugged around on a fingertip, yet delivers the incredible leverage, right where it is needed, to easily pop those heavyweights right off their wheels.



SUPER SERPENT

PART NO.	EDP NO.	LENGTH	SOCKET SIZES	WEIGHT
T2005	35447	37" (94 cm)	3/4" (19mm)	6.6 lbs. (3.0kg)
T2006	35448	37" (94 cm)	3/4" (19mm)	5.5 lbs. (2.5kg)



35453 – 4 PC. SERPENT™ SET

Take the struggle out of mounting and demounting truck tires.... Everything you need to change tires easily and effortlessly. U.S. Patent No. 6,991,018. Weight: 12 lbs (5.4kg).

SET INCLUDES:

- T2001 (35449) Demount Tool:
 - Demounts both beads;
 - No more lifting the tire/wheel assembly off the ground
- T2002 (35450) Mount Bar:
 - Designed to stop against the rim;
 - Won't slip into wheel well;
 - Small end of tool easily gets under the stretched bead for that last pull
- 31710 Bead Holding Device:
 - Holds the bead in place against the wheel while mounting the tire
- 31810 Wheel Protector:
 - Protects wheel rims from damage



35446 - SUPER SERPENT™ 5 PC. TIRE CHANGING SET

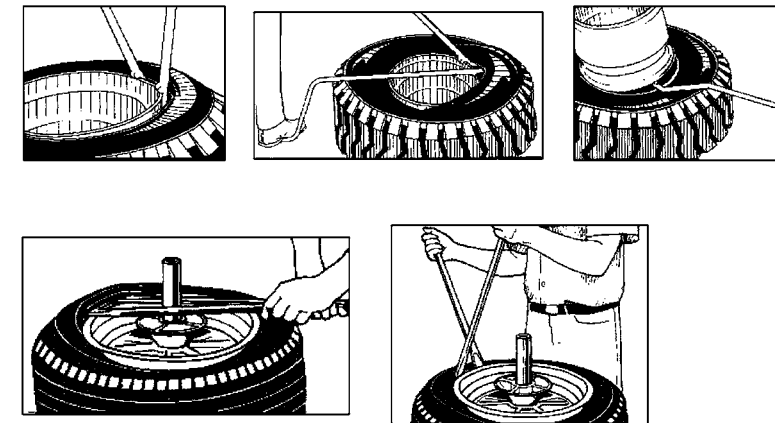
Finally! Tools specially designed to handle big, big tires that actually work! Now, mounting and demounting the biggest, heaviest truck tire is made easy. Our tools don't have to be super big and heavy to handle the tires that are. These powerful tools are single-piece constructions, forged from high-grade carbon steel, and fully heat-treated for strength and long-lasting durability. We've even modified the bead holders, to "reach over" the extra wide band, and guide it under the rim.



INDIVIDUAL HEAVY-DUTY TRUCK TORQUE EXTENSIONS

MODEL	DESCRIPTION	DRIVE SIZE SOCKET/OPENING	TORQUE LIMIT	WEIGHT
30230	Yellow (O)	3/4"	175 ft/lbs	.75 lbs. (.3 kg)
30231	Yellow (N)	3/4"	250 ft/lbs	.75 lbs. (.3 kg)
30232	Yellow (U)	3/4"	350 ft/lbs	.75 lbs. (.3 kg)
30233	Yellow (M)	3/4"	475 ft/lbs	.75 lbs. (.3 kg)
30236	Yellow (T)	1"	175 ft/lbs	1 lbs. (.5 kg)
30237	Yellow (R)	1"	250 ft/lbs	1 lbs. (.5 kg)
30238	Yellow (S)	1"	350 ft/lbs	1 lbs. (.5 kg)
30239	Yellow (P)	1"	475 ft/lbs	1 lbs. (.5 kg)
30240	Yellow (W)	1"	650 ft/lbs	1 lbs. (.5 kg)

WARNING: Torque sockets & truck torque extensions cannot be used to take off wheel nuts. Calibrate your impact gun & follow all manufactures' recommended procedures when using Torque Master products.



TIRE MOUNT/DEMOUNT SPOONS

These irons are designed for fast and efficient tire changing. The 30" spoons provide enough strength and leverage to work on large truck, bus, off-road vehicle, tractor and aircraft tires.

TIRE MOUNT/DEMOUNT SPOONS

PART NO.	EDP NO.	LENGTH	STOCK	WEIGHT
T20A	33220	30" (76.2cm)	11/16" (17.5mm)	3 lbs. (1.4kg)
T39	33239	30" (76.2cm)	7/8" (22mm)	4 1/2 lbs. (2.0kg)
T19A	33219	30"	11/16"	3 lbs.



T20A

VICES:

ALL KEN-TOOL PROFESSIONAL VISES FEATURE:

- 360° swivel base
- Machined base plate for smooth swivel
- Heavy-duty jaw beam covers screw
- Built-in anvils
- Jaw faces have "V" notches for vertical gripping
- Built-in pipe jaws
- Gear-type locking system with double lock-down bolts – locks vise securely in position
- "V" notched, replaceable/reversible jaws made of carbon steel and heat-treated for extra strength, diamond cut on one side – smooth on the other.

PROFESSIONAL WORKSHOP VISES:

With high quality construction for extra durability and full-strength performance at any jaw opening, these vises are made for the professional – strong, durable, and built to last.

PROFESSIONAL WORKSHOP VISES

MODEL	EDP NO.	JAW WIDTH	JAW OPENING	THROAT DEPTH	PIPE JAW CAPACITY	WEIGHT
K55	64055	5-1/2" (14cm)	6-1/2" (17cm)	3-3/16" (8cm)	1/8" – 2-1/2" (.3 – 6cm)	30 lbs. (14kg)
K65	64065	6-1/2" (17cm)	7-1/2" (19cm)	3-3/4" (10cm)	1/8" – 2-1/2" (.3 – 6cm)	41 lbs. (19kg)



K65

PROFESSIONAL REVERSIBLE MECHANIC'S VISES:

With our Reversible Vises you get all of the high quality features and rugged durability of the Pro Workshop Vises, and more! Significantly increase your gripping capacity when you reverse the position of the front jaw. Two built-in anvils provide more work surface area than any other vise.

PROFESSIONAL REVERSIBLE MECHANIC'S VISES

MODEL	EDP NO.	JAW WIDTH	JAW OPENING	THROAT DEPTH	PIPE JAW CAPACITY	WEIGHT
KT4650	64650	6-1/2" (17cm)	7" – 10" (18 – 25cm)	3-3/4" (9.5cm)	1/8" – 3" (.3 – 8cm)	50 lbs. (23kg)
KT4800	64800	8" (20cm)	8" – 11" (20 – 28cm)	4-3/4" (12cm)	1/8" – 3" (.3 – 8cm)	74 lbs. (34kg)



KT4800



30606 – PROFESSIONAL LUG NUT COVER REMOVER

Special coating will not scratch or damage chrome, painted, or coated lug nut covers.



T147A - 35847 BEAD-EZE® TIRE LUBRICANT

Lubricates tire and rim for ease in mounting. Dries quickly. Makes excellent leak detector when diluted. Size: 1 gallon; Weight: 9 lbs. (4.1kg)



39730 - MACPHERSON STRUT COIL SPRING COMPRESSOR SET

Compressor works on most MacPherson Strut assemblies and is for use with replacements. Use the compressor when replacing bent strut or strut tube and damaged spindles. Use it on or off the car. Acme threaded screw for durability. Do not use on General Motors "A", "C", "J" or "X" body cars. Weight: 7 lbs. (3.1kg).



T950 – IRONMAN™ ERGONOMIC WHEEL LIFTING BAR

Use the leverage created by the tool, not your back! Reduces back strain. Easily and safely lift heavy, awkward truck tire and wheel assemblies. Specially designed forged ends work from either side of the wheel assembly as it lays flat. Extremely useful in outdoor conditions – when truck tire and wheel assemblies can become wet and slippery. Lift all sizes and types of small and large heavy truck wheels: Standard sizes including 22.5" and 24.5" wheels, plus European (which have 1" lug holes), Super Wide and even the Super Single (a 340 lb. assembly) size. Length: 58" (147cm); Weight: 10 lbs (435kg).



30115 –THREE PIECE LUG AND LOCK FLIP SOCKET SET

One end is a standard 6-fluted twist socket for removing damaged wheel lugs. Flip socket over and you have a 12-fluted twist socket for removing wheel locks. Drive: 1/2"; Socket Sizes: 19mm, 3/4" socket; 7/8" socket; 3" extension; Weight: 1.6 lbs. (.7kg).

PNEUMATIC BEAD EXPANDERS

Expanders fit most bias ply passenger tires. A pliable neoprene rubber tube is encased in a tough, long-lasting nylon cover. Expanders slip easily over tire and withstand contact with oil, grease, solvents, and acids. Follow instructions included with tool. Use on belted bias ply tires, 14", 15", 70-series tires and larger. Expands bead by compressing tread. T132 for belted bias ply tires, includes over-pressure release valve. T133 for standard bias ply tires.

PNEUMATIC BEAD EXPANDERS

PART NO.	EDP NO.	MIN/MAX DIAMETER	TUBE DIAMETER	WEIGHT
T132	31432	24-34" (61-86 cm)	2-1/4" (6 cm)	2.8 lbs (1.2 kg)
T133	31433	22-32" (60-81 cm)	3/4" (2 cm)	.75 lbs (.3 kg)

HAMMERS:



T34RH - 35105 REPLACEMENT RUBBER HEAD

Replacement rubber head for use on Ken-Tool Heavy-Duty Tire Hammers.



T32 - 35310 2 LB. RUBBER MALLET

Rubber head minimizes marring surfaces. Length: 17".



T68 - 31568 STANDARD WHEEL COVER PULLER/REPLACER

Removes wheel covers quickly and easily without gouging or scratching them. Rubber head T11RH prevents damage to hubcap and is replaceable. Length: 14" (36cm); Stock: 7/16" (11.1cm); Weight: 1.3 lbs. (.6kg).



PART NO.	810F-22 1/2	12	076188	64	CH-340-OP	45	GA-185	40	HE-369	32	MB-3	27	OTR-1825	67	RV-1179A	33	T147A	77	TR98	72	TV-546E	31	WH-45-6	7	WH-300-J-653	7
41 MS-00	810F-23	12	077015	65	CH-350-LO	46	GA-185RCL	40	HE-370	32	MB-5A	27	OTR-1825CK	67	RW-13	39	T-620	16	TRL-BAT	55	TV-547D	31	WH-45-7 1/2	7	WH-300-J-657	7
57TT	810F-23 1/2	12	077018	65	CH-355-LO	46	GA-185S	40	HE-371	32	MB-8	26	OTR-2000	67			T-667	16	TRL-COUP	55	TV-552	31	WH-45-8	7	WH-300-J-658	7
60 MS-27	810F-24 1/2	12	077085	65	CH-360	45	GA-190	41	HE-372	32	MB-12-75	26					T-668	16	TRL-H-25	55	TV-553	31	WH-45-9	7	WH-300-J-694	9
70 MS-7	810F-25	12	077155	65	CH-360-OP	45	GA-240	43	HE-373	32	MB12-85	26					T-670	10	TRL-H-CH-360OP	55	TV-553C	31	WH-45-10	7	WH-JF-994	9
70 MS-27	810F-29 1/2	12	077185	65	CH-360S	45, 52	GA-250	43	HE-380	32	MB-13	26					T950	77	TRL-H-IN-20	55	TV-553E	31	WH-45-10 1/2	7	WHD-0585EC	13
80 MS-27	810F-32	12	077188	65	CH-370-LO	46	GA-250S	43	HE-381	32	MB-14	26, 27					T2001	74	TRL-H-N1200	55	TV-554D	31	WH-45-12	7	WHD-5008EC	13
89-2 WASV	810F-40	12	082012	66	CO-101	58	GA-255	43	HE-382	32	MB-19-75	26					T2002	74	TRM1	72	TV-555D	31	WH-45-13	7	WHD-5922EC	13
89-3W	867-1 1/2	12	082122	66	CO-103	58	GA-255S	43	HE-383	32	MB-19-85	26					T2005	74	TRM2	72	TV-555E	31	WH-45-24	7	WHD-7103EC	13
89-3 WASV	867-1 1/4	12	082133	66	CO-105	58	GA-274	42	HE-389	32	MB-20	26					T2006	74	TRM3	72	TV-570	30	WH-45-28	7	WHD-7601EC	13
89-3 WTK	867-2	12	086100S	60	CO-107	59	GA-276	42	HE-390	32	MB-23	27					T9520	71	STAND-4	51, 52, 55	TV-571	30	WH-45-29 1/2	7	WHD-7602EC	13
89HEAT	867-2 1/2	12	087100S	60	CO-109	59	GA-285	42	HE-391	32	MB-25	26					TALON-1	67	TRM7	72	TV-572	30	WH-45-30	7	WHD-7940EC	13
89HKC-12	867-3	12	100450	66	CO-111	59	GA-289	42	HE-392	32	MB-26	26					TC-50	35	TV-218R	36	TV-573	30	WH-45-32	7	WHD-7948EC	13
89HKC-12M	867-3 3/8	12	109176A	66	CO-111R	59	GA-290	42	HE-393	32	MB-27	26					TC-60	35	TV-220R	36	TV-574	30	WH-45-36	7	WHD-7949EC	13
89HKC-12MG	867-4	12	109176B	66	CO-112	59	GA-850-330	42	HE-394	32	MB-29-85	26					TC-70	35	TV-399	35	TV-575	30	WH-46-4 1/2	7	WHD-9903EC	13
89HKC-24	867-4 1/2	12	110203	66	CO-201	58	GA-850-350	42	HE-395	32	MB-50	27					TC95	71	TV-400	35	TV-575-HP	30	WH-46-9	7	WHG-0570VC	13
89HKC-24M	867-5	12	125392	62	CO-204	59	GA-850-370	42	HE-396	32	MB-51	27					TC95	71	TV-400S	35	TV-575HP/DS-1	31	WH-46-J-651	7	WHG-1450VC	13
89HKC-24MG	867-5 9/16	12	126392	62	CO-301	58	GA-850-377S	42	HE-397	32	MB-52	27					TC95	71	TV-401	35	TV-600-HP	29	WH-47-4 1/2	7	WHG-4985VC	13
89HKC-25C	867-6	12	127393	32	CO-303	58	H		HE-4430	32	MB-55	27					TC95	71	TV-402	35	TV-602-HP	29	WH-47-9	7	WHG-5112VC	13
89HKC-50	867-6 7/8	12	139698	62	CO-501	58	H-20	66	HN-17	39	MBAT	27					TC95	71	TV-412	29	TV-618A	36	WH-47-J-652	7	WHG-5200VC	13
89HKC-50C	867-7 1/4	12	139987	62	CO-701	58	H-20	66	HN-18	39	MBV-L	27					TC95	71	TV-413	29	TV-618B	36	WH-48-J-655	7	WHG-5410VC	13
89HKL-25	867-7 3/4	12	140230B	66	CO-800	59	H-22	66	HN-21	39	MR-800	18					TC95	71	TV-414	29	TV-618RB	36	WH-49-J-654	7	WHG-5420VC	13
89HKT-12	867-8	12	140233A	66	CO-801	59	H-41	8, 11	HN-22	31, 39	MR-850	18					TC95	71	TV-415	29	TV-621A	36	WH-50-6	7	WHG-8018VC	13
89HKT-12M	867-8 1/2	12	225392	32	D		H-42	11	HT-R760	17	MR-890	18					TC95	71	TV-EX	23	TV-622A	36	WH-50-7 1/2	7	WHG-8019VC	13
89HKT-24	867-9	12	227392	32	DS-1	33, 38	H-43	10	HT-R-761	27	MSN-4	39					TC95	71	PT GAUGE	23, 24	TV-623A	36	WH-50-J-659	7	WHG-8852VC	13
89HKT-24M	867-10	12	245392	32	DS-210	18	H-45	11	HT-Z-100	22	MT-3000	16					TC95	71	PT-H-42	24	TV-416/DS-1	31	WH-50-J-660	7	WHG-9440VC	13
89HKT-50	867-10 3/4	12	246392	32	DS-210P	18	H-47	10, 35	HX-24	35	MT-4000	18					TC95	71	PT-R-520	23, 24	TV-416F	29	WH-51-J-668	7	WHG-9470VC	13
89-HMVN	867-12	12	247392	32	DS-215	18	H-47L	10	HX-44	35							TC95	71	T32	77	TV-916R	36	WH-52-2	7		
89HVC-12G	867-12 1/2	12	257392	32	DS-226	18	H-50	19, 36									TC95	71	T34RH	77	TV-416MC	31	WH-53-5 1/2	7	Z	
89HVC-24G	867-16	12	430632	62	DS-226	18	H-78	63	I								TC95	71	T39	75	TV-620	47	WH-54-6	7	Z-1	21
89HVC-50G	867-18 7/8	12	430732	62	DS-296	18	H-79	63	I-1000	36	N-1000	36					TC95	71	T41	69	TV-625	47	WH-54-6	7	Z-2	21
89HVI-25	867-22 1/2	12			DS-385	10	H-150	63	I-400	57	N-1012S	36					TC95	71	T42	69	TV-630	47	WH-55-2 1/2	7	Z-2	21
89-MDA	867-24 1/2	12			DS-390	10	H-155	64	I-401	57	N-1019	35					TC95	71	T48A	73	TV-631	44	WH-55-8 1/2	7	Z-2	21
89-MXA	977S-5 1/2	9			DS-400	10	H-155C	64	I-402	57	N-1050	19					TC95	71	T52	69	TV-632	47	WH-56-3	7	Z-3	21
89-OEN	977S-11	9			DT-105	42	H-180	63	I-404	57	N-1055	42					TC95	71	T57	70	TV-633	47	WH-57-3	7	Z-3	21
89TPMS-CAPG	001004	66			DT-150	40	H-181	63	I-405	56	N-1057	37					TC95	71	T59	70	TV-634	47	WH-58-2 1/2	7	Z-4	21
89TRL	001005	66			E		H-182	63	I-405-3M	56	N-1066	19					TC95	71	T61	71	TV-635	47	WH-59-J-656	7	Z-4	21
89TRL-4	001102	66			E-3100-1	17, 22	H-183	63	I-405-6M	56	N-1091	37					TC95	71	T62	71	TV-645	47	WH-70-J-661	8	Z-5	22
89TRL-6	001103	66			E-3100-4A	17	H-185	65	I-405-9M	56	N-1091-2	37					TC95	71	T68	77	TV-501	30	WH-70-J-661-10 1/2	8	Z-8	22
89TRL-6B	001109	66			A-126	15, 39	H-188	65	I-405-9LOM	56	N-1091-3	37					TC95	71	T81	15, 19	TV-510	30	WH-70-J-661-25 1/2	8	Z-9	22
89-XDA	001402	66			A-127	39	H-188C	65	I-405-9M	56	N-1135	38					TC95	71	T82	15	TV-511	30	WH-70-J-661-28	8	Z-10	22
89-XDB	001763	66			A-128	39	H-190	63	I-405-12LOM	56	N-1147	29					TC95	71	T90	70	TV-513	29	WH-70-J-664	8	Z-11	22
89XDB-G	001834	66			A-144	39	H-523MS	30	I-405-12M	56	N-1199	45, 46					TC95	71	T95	71	TV-515	29	WH-70-J-664-12 1/2	8	Z-12	22
89-XDZ	2755L	34			A-145	38	H-556	34	I-406M	56	N-1200	45, 56					TC95	71	T99	70	TV-685	47	WH-70-J-667	8	Z-12A	22
90 MS-27	5007	33			A-147	38	H-556	34	I-408	57	N-1202	38					TC95	71	T101	73	TV-695	43	WH-71-J-9	8	Z-13	21
114S-5 1/2	5012	62			A-148	38	H-798	34	I-409	57	N-1410	43					TC95	71	T102	73	TV-700	27	WH-71-J-9	8	Z-17	22
114S-11	5014	62			FMB	27	H-1503	63	I-415-3	56	N-1418	7					TC95	71	T104	73	TV-543D	31	WH-72-J-21 1/4	8	Z-17	22
115 MS-27	5104	62			FP-134	37	H-1611	61	I-415-6	56	N-1420H	41					TC95	71	TM95	71	TV-543E	31	WH-72-J-28	8	Z-100	22
000230	5120	62			FP-135	37	H-1612	61	I-415-9	56	N-1451	37					TC95	71	TR1	75	TV-544	31	WH-73-J-21 1/4	8	ZBR-0581	21
000233	5131	63			FP-136	37	H-1681	61	I-415-12	56	N-1452	37														

HALTEC HALTEC HALTEC HALTEC HALTEC HALTEC HALTEC HALTEC HALTEC HALTEC
HALTEC HALTEC HALTEC HALTEC HALTEC HALTEC HALTEC HALTEC HALTEC HALTEC
HALTEC HALTEC HALTEC HALTEC HALTEC HALTEC HALTEC HALTEC HALTEC HALTEC
HALTEC HALTEC HALTEC HALTEC HALTEC HALTEC HALTEC HALTEC HALTEC HALTEC
HALTEC HALTEC HALTEC HALTEC HALTEC HALTEC HALTEC HALTEC HALTEC HALTEC
HALTEC HALTEC HALTEC HALTEC HALTEC HALTEC HALTEC HALTEC HALTEC HALTEC
HALTEC HALTEC HALTEC HALTEC HALTEC HALTEC HALTEC HALTEC HALTEC HALTEC
HALTEC HALTEC HALTEC HALTEC HALTEC HALTEC HALTEC HALTEC HALTEC HALTEC
HALTEC HALTEC HALTEC HALTEC HALTEC HALTEC HALTEC HALTEC HALTEC HALTEC

DEDICATED TO LEADERSHIP IN TIRE VALVE SYSTEMS FOR TODAY & TOMORROW.

Haltec Corporation
32585 North Price Road
PO Box 1180
Salem, OH 44460
p: (330) 222-1501
toll free: (800) 321-6471
f: (330) 222-2302
haltec.com

